

1950

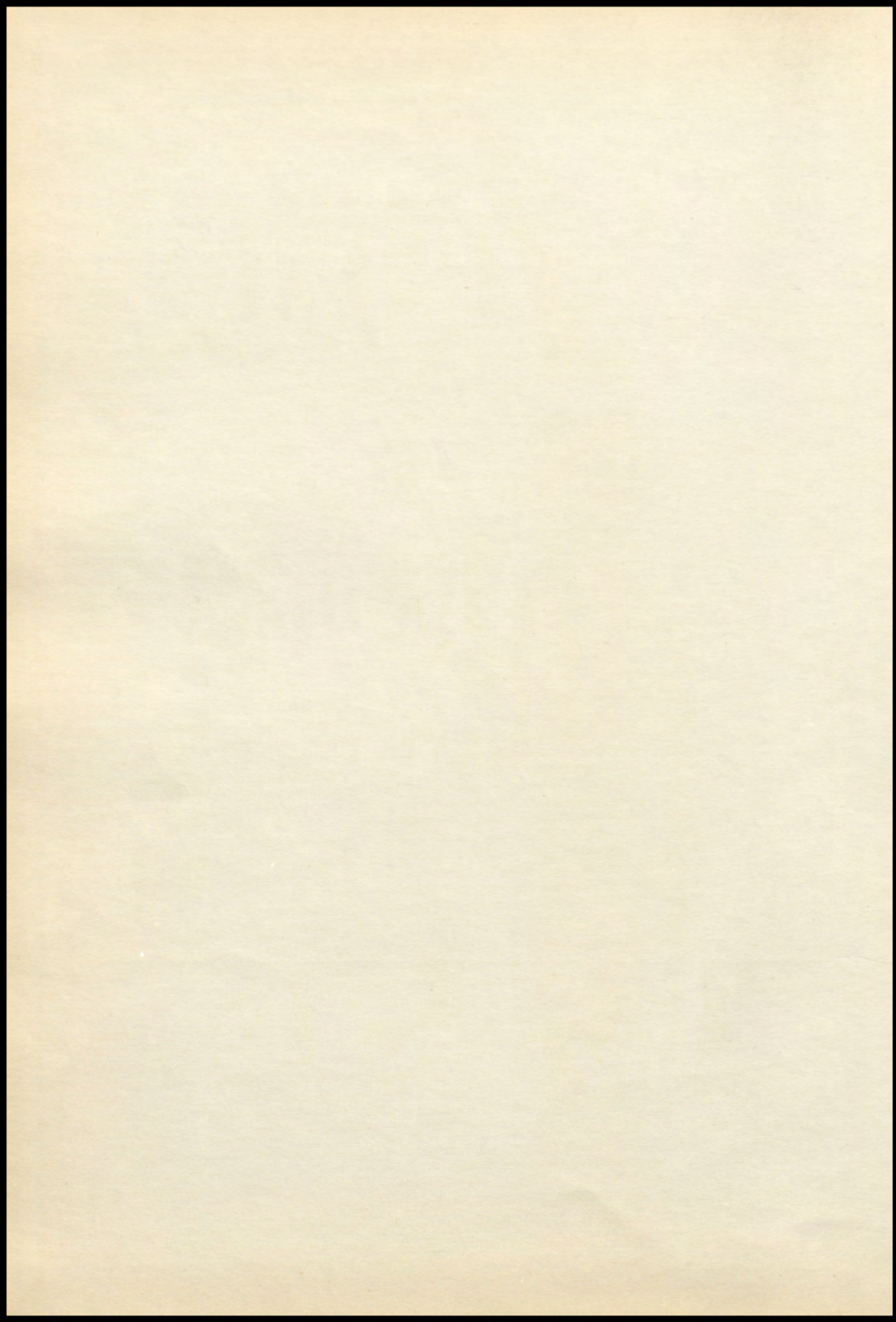
ALAMO



Lala Steers
Spring 1949-50

Mississippi
Mississippi





ALAI 10



1950

—Bircher—

FOREWORD

It does not seem possible that our twelve years of school are now at an end. To make sure that we shall always remember our fellow students and those special events, we have printed this year book, containing pictures of students we have known, and of events that have taken place during our school life.

DEDICATION

To the 1949-1950 L. H. S. football team, who honored us by winning the Quint-City Conference, we dedicate this Alamo of 1950.



P. L. Marsh,
President



Marion Parker,
Vice President



J. Overton Fry,
Treasurer



Russel Armentrout,
Secretary



Eric A. Cunningham



W. P. Haley

**BOARD
OF
EDUCATION**



Mr. George D. Heltzell
Superintendent



Mr. Galen E. Lankford
Principal



Mrs. Fern Todd
Secretary

OUR



Mr. Merrell Taylor
Elementary Supervisor
General Science



Miss Mae Hofrieter
History, Geography



Mrs. Claude Smallwood
Home Economics

Faculty



Miss Lois Hastings
Commerce



Mrs. Lucy English
Latin, English



Mr. William H. Woolford
Art, Spanish, English



Mr. Fred Rynearson
Music



Mr. Wirt C. Fowler
Coach, Psychology,
American Government,
Social Studies I



Mrs. Helen Hildebrand
Speech, English,
Physical Education



Mr. William Ellis
Vocational Agriculture



Mrs. Mildred Burns
Biology, Chemistry,
General Math.

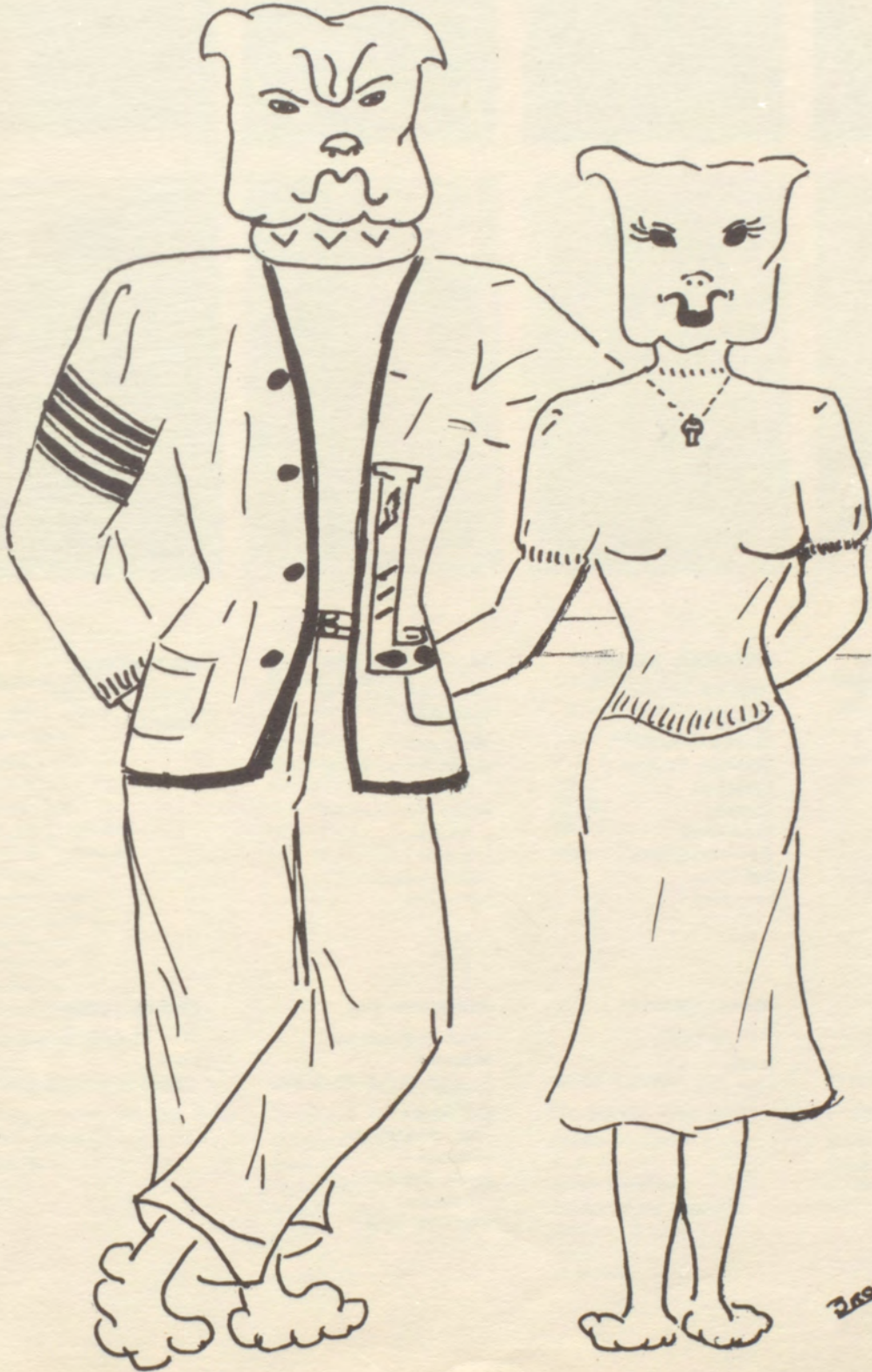


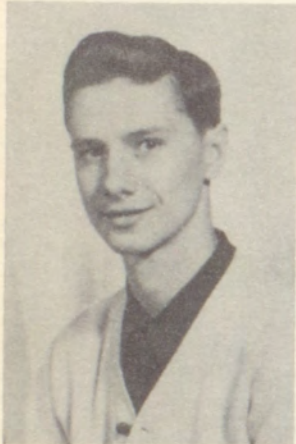
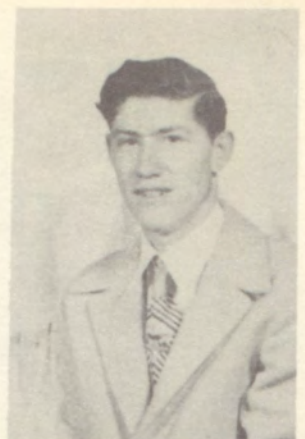
FIRST ROW: Left to Right: Betty Hudson, Carolyn Creamer, Peggy Garner, Phyllis Clarke, Carol Cunningham, Larry Nickles.
SECOND ROW: Connie Johnson, Eulalie Haley, Mackey Love, Beverly Brown, Bob Campbell, Anita Dean, Jack Bircher, Peggy Dell Fry, Meade Spears, Marilyn McIlroy.

ALAMO STAFF

Sponsor.....	Galen E. Lankford
Editor.....	Peggy Garner
Assistant Editor.....	Phyllis Clarke
Business Manager.....	Bill Guengerich
Assistant Business Manager.....	Jimmy Garner
Senior Editor.....	Carol Cunningham
Junior Editor.....	Betty Hudson
Sophomore Editor.....	Carolyn Creamer
Freshman Editor.....	Larry Nickles
Music Editor.....	Bob Campbell
Art Editors.....	Beverly Brown, Jack Bircher
Boys' Athletic Editor.....	Meade Spears
Girls' Athletic Editor.....	Eulalie Haley
Activity Editor.....	Peggy Dell Fry
Agriculture Editor.....	Mackey Love
Home Economics Editor.....	Connie Johnson
Secretary.....	Anita Dean
Treasurer.....	Marilyn McIlroy

SENIORS





ANDERSON, MARJORIE

"I just adore Chevrolets"
Glee Club
F. H. A.

BANKHEAD, BARBARA

"Best cut diamond"
Glee Club
Student Council
Christmas Pageant
Basketball
Operetta
Verse Choir
Advanced Chorus
Red Cross
Latin Play

BATCHELDER, ANN

"But I tell you, I am going to college"
Highlights
Senior Homecoming
Attendant
Senior Barnwarming
Attendant
Librarian
Office Assistant
Latin Club

BECK, MERRILL

"Small, but mighty"
Basketball

BIRCHER, JACK

"Just a little more horror, please"
Cheerleader
Alamo Staff
Librarian

BRIMER, CARROLL

"Oh, gurruls!"
Band
Glee Club

BURBRIDGE, SUE

"Back field emotion"
Majorette
Student Council
Pep Squad
Girls' Basketball
Librarian
Junior Homecoming
Attendant
Highlights Staff

BROWN, JAMES

"The situation is well in hand"



BROWN, BEVERLY

"I don't smoke, but I love Campbells!"

- Band
- Glee Club
- Honor Roll
- Freshman Sec.-Treas.
- English I Award
- Operetta
- Mixed Chorus
- Typing Award
- Pep Squad
- Junior Play
- Highlights
- Alamo Staff

BURKS, TOMMYE

"Just ask me, I know!"

- Glee Club
- Basketball
- Pep Squad
- Operetta
- Junior Play
- F. H. A.

CAMPBELL, BOB

"Meet you at Browns!"

- Junior Play
- F. F. A.
- Band
- Track
- Glee Club
- Mixed Chorus

CHAPIUS, LEON

"Gets there in a hurry!"

- F. F. A. Sec.
- Glee Club
- Mixed Chorus

CHARLESWORTH, JERRY

"It isn't what you do, but what you get away with!"

- F. F. A.

CREAMER, BETTY JO

"I drink A & P grape juice"

- Student Council
- Band
- Glee Club
- Mixed Chorus
- Operetta
- F. H. A.
- Speech Play

CRISAN, JOHN

"Ladies and Gentlemen. . ."

- Freshman Pres.
- F. F. A.
- Junior Vice-Pres.
- Student Body President
- Student Council
- Track
- Highlights

COZARD, LORENE

"Rings on her fingers.

- Band
- Drum and Bugle
- F. H. A.



CUNNINGHAM, CAROL

"Variety is the spice of life"
Band Majorette
Glee Club
Mixed Chorus
3 Scholarship Awards
Alamo Staff
Basketball
Operetta
Junior Play
Eng.-Hist. Awards
Pep Squad
Highlights Ed.

DEAN, ANITA

"Red head—'nough said!"
Pep Squad
F. H. A.
Alamo Staff

DONATH, BILL

"Einstein first, then Bill"
Junior Vice-Pres.
Highlights Staff

EDDINGTON, CLAUDEAN

"Cheerful and friendly"
F. H. A.

ELLIOT, HARRY

"Why girls leave home"
Football
"L" Club Pres.
"L" Club Vice-Pres.
Glee Club
Operetta

FRITZ, JOHN

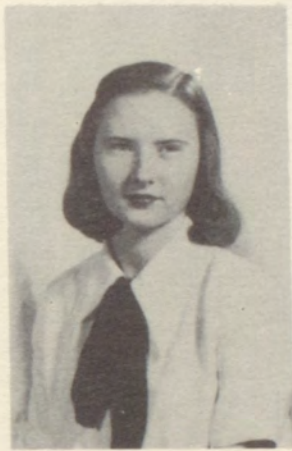
"Soloman says: The first 100
wives are the worst"
Football
F. F. A.

DELL FRY, PEGGY

"Girl of his dreams"
Fresh. F. F. A. Attendant
Fresh. Homecoming
Attendant
Operetta
Glee Club and Band
Mixed Chorus
Soph. Vice-Pres.
Highlights Staff
Pep Squad
D. A. R. Award
Junior Play
Alamo Staff

FLAHERTY, NANCY

"Have you heard this one?"
Glee Club
Mixed Chorus
F. H. A.
Pep Squad
Speech Play



**FOUNTAIN, MARY
FRANCES**

"Oh, Johnny, how you can
love!"

- Sec.-Treas. of homeroom
at Hannibal
- Glee Club
- Band

GARNER, PEGGY

"Going to Pensa-cola—for a
rest!"

- Operetta
- Glee Club
- Band
- Highlights
- Alamo Editor
- Basketball
- Junior Play
- Pep Squad
- Office girl
- Soph. Barnwarming
Attendant

GRIFFITH, JIMMIE

"Baby Face!"

- F. F. A. Treas.
- Operetta
- Meat judging team
- Glee Club
- Mixed Chorus
- Asst. Mgr. of Barnwarming
- Ag. Basketball

GUENGERICH, BILL

"Pretty sporty!"

- Soph. Vice-Pres.
- Jr. Pres.
- Vice-Pres. of Student Body
- Student Council
- Football
- Basketball
- "L" Club
- Band
- Glee Club
- Outstanding Soph.
- Junior Play

HAFF, BETTY JO

"Efficiency comes in all
forms"

- Pep Squad
- Glee Club
- Sec. Practice

HALEY, EULALIE

"Incendiary blonde"

- Band
- Glee Club
- Operetta
- S. S. Award
- Alamo Staff
- Mixed Chorus
- Highlights Staff
- Basketball
- Pep Squad
- Junior Play
- Office girl

HIGGENBOTHAM, LOU

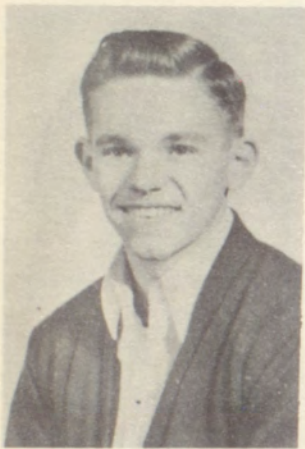
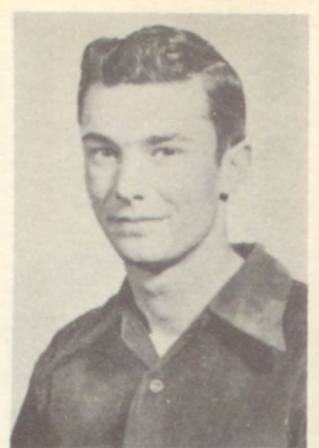
"Seniors are nice, but, oh,
these alumni!"

- F. H. A.
- Mixed Chorus
- Glee Club

HUGHART, JO ANN

"When the roll is called in
Mr. Fowler's class, I'll be
there"

- Soph. Homecoming
Attendant
- Student Council
- F. H. A. Vice-Pres.
- Pep Squad Pres.
- Band
- Glee Club
- Homecoming Queen '49



JOHNSON, CONNIE

"Looking at the world thru
rose-colored glasses"

- Glee Club
- F. H. A.
- Alamo Staff
- Junior Play

KILBY, DONNA

"Yes, Mr. President"

- F. F. A. Barnwarming
Queen
- F. H. A. Sec.-Treas.
- Drum and Bugle Corps
- Glee Club
- Mixed Chorus
- Pep Squad

LONERGAN, JIMMY

"Got your trig?"

- Glee Club

LOVE, MACKEY

"Romeo out of commission"

- F. F. A. Vice-Pres.
- Senior Vice-Pres.
- Track
- Alamo Staff
- Highlights
- State Farmer
- Spanos Ag. Award

MARSH, KENNY

"Man on the farm"

- Basketball
- Football
- Track
- Junior Play
- Sec.-Treas. "L" Club
- Glee Club
- Mixed Chorus

McILROY, MARILYN

"I'm going shopping—at
Kroger's!"

- Band
- Girl's Glee Club
- Mixed Chorus
- Pep Squad
- Basketball
- Senior Sec.-Treas.
- Operetta
- Alamo Staff
- Office girl

MEALY, VIC

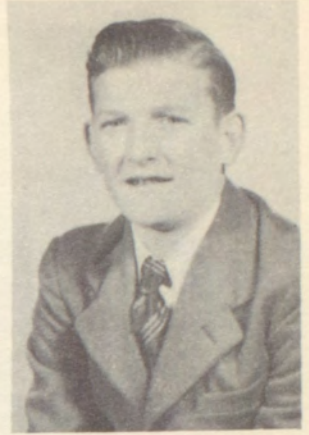
"That 'Cute' Cheerleader"

- Highlights Staff
- Junior Play
- Mixed Chorus
- Speech Play
- Cheerleader
- Glee Club

MURRY, GENE

"Effects one like TNT—foot-
ball, of course!"

- F. F. A.
- Football
- Soph. Class Pres.
- Student Council
- Senior Class Pres.
- "L" Club



OGLE, LEWIS

"Competition for the wind!"

O'SHEA, BONNIE SUE

"Clarksville Kid!"

Glee Club

Librarian

Sec. Practice

PEDERSON, HELEN

"Don't forget your lunch ticket!"

Sec. Practice

REED, BILLY

"Good things come in small packages!"

Basketball Mgr.

"L" Club

RUFFIN, BETTY JEAN

"Her disposition's as sunny as her hair!"

Glee Club

Mixed Chorus

Office Asst.

SHIPLEY, BETTY

"Fresh as a daisy!"

Glee Club

Office Asst.

SPEARS, MEADE

"A friend in need is gum indeed!"

Football

Basketball

"L" Club

Alamo Staff

Highlights Staff

Junior Play

Band

Glee Club

STARK, ANTHONY

"Meet Mr. Herculies!"

Football

Glee Club



SPARKS, CHARLES

"Just me and my sister!"
F. F. A.

STEPHANS, CHARLES

"One down, thirty-one to go!"
Football

TUCKER, SARAH

"Vandalia Shy!"
F. H. A.
Librarian

TURNBULL, JANE

"Vim, vigor and vitality!"
Drum and Bugle
Cheerleader
Highlights
Junior Barnwarming
Attendant

UMFLEET, MARY ROSE

"The Sweetheart of Sigma
Nu!"
Freshman Play
Operetta
Librarian
Glee Club
Mixed Chorus
Highlights
Junior Play
Pep Squad
Manager, Basketball

WEEKLEY, JOAN

"Talent on hand!"
Glee Club
Mixed Chorus
Speech Play
Highlights

WHITE, BILL

"Give me the long, tall
blonde anytime!"
F. F. A. Reporter
F. F. A. Parliamentarian
Football

WURTZ, JO ANN

"I've just got to balance the
books!"
Glee Club
Drum and Bugle
Operetta
Basketball
Pep Squad
Highlights
Student Council
Sec.-Treas. Student Body

Student whose pictures are not shown are

**PAUL BURKS
DALE SMITH**

SENIOR CLASS

Louisiana High School was practically dwindling away when we arrived in the fall of '46—adding to the agenda, seventy-one new faces, the largest Freshman class for many years at L. H. S. This was the first year of the Juniors' protege, our newspaper, the L. H. S. Highlights, and the first and last operetta "Rio Rico", under the direction of Mrs. Mildred Burns. Twenty Freshmen were in the cast, five of whom were in the list of individual characters: Meade Spears, Marilyn McIlroy, Carol Cunningham, Kenny Marsh, and Paul Burks. The Bulldogs, coached by Mr. Eugene Grant, also took the sub-regional basketball trophy, with four Freshmen boys on the team: Bill Guengerich, Kenny Marsh, Herman Thomas, and Meade Spears. In football, too, we were proud of our boys, with Harry Elliott and Gene Murry lettering.

That year we prided ourselves in our popular members, three of whom won outstanding honors: Donna Kilby was elected annual Barnwarming Queen, with Peggy Dell Fry as Freshman attendant. "Pete" was also attendant to the 1946 Football Queen with Mackey Dee Love as her escort.

Our officers for 1946-47 were: John Crisan, President; Bill Guengerich, Vice-President; Beverly Brown, Secretary-Treasurer. The class was sponsored by a newcomer to the L. H. S. faculty, Miss Mae Hofrieter.

In the music field, we had three members in the Drum and Bugle Corps, three majorettes in the band, and twelve band members.

We returned en masse as Sophomores in 1947 and school began in full swing, with our membership still climbing—we now boasted seventy-two! We were fortunate in having Miss Mae Hofrieter as our faithful sponsor once again. Our "Big Bosses" for this year were: President: Gene Murry; Vice-President: Peggy Dell Fry; Secretary-Treasurer: Ruth Ann Paschal. We claimed seventeen band members, three of these being twirlers, and Carol Cunningham as majorette of the Drum and Bugle Corps. This was the first year of the Student Council, and Jo Ann Hughart and Gene Murry were the Sophomore Representatives.

Special honors went to Bill Guengerich for being chosen the outstanding Sophomore of the year; to Peggy Garner as Sophomore Barnwarming attendant; to Jo Ann Hughart as Sophomore attendant to the Football Queen with Kenny Marsh as her escort. In the sports field, the Sophomores played an active part. Gene Murry and Harry Elliott earned their second letter in football, with Bill Guengerich, Harold Elliott, Joe Penrod, and Meade Spears receiving their first letter in that sport. Three boys made the team in basketball.

It would be difficult to pick the highlights of our wonderful Junior year. With a total of seventy-four students, the year began with a bang! Our guiding hands for the year were: Bill Guengerich, President; Bill Donath, Vice-President; Jane Turnbull, Secretary-Treasurer; with Sue Burbridge and Bill Guengerich, Student Council Representatives. We were guided by our ever-devoted Miss Hofrieter, who produced "Spring Fever," our Junior Play, and Mrs. Claude Smallwood, to whom much of the credit is due for a very successful banquet and prom entitled "Neptune's Kingdom." Carol Cunningham began her journalistic career at L. H. S. as Editor of the "Highlights" with three members of the class contributing to the production of the yearbook: Assistant Editor: Peggy Garner; Assistant Business Manager: Bill Guengerich; and Junior Editor: Beverly Brown. Sue Burbridge was elected Junior attendant to the Homecoming Queen and was escorted by John Crisan. Jane Turnbull also received the honors of being Junior attendant to the Barnwarming Queen and was a cheerleader.

Something new had been added! In fact, several things. In the sports field, the girls' basketball team was born, with six Juniors on the team which was coached by Miss Hofrieter. Five Juniors lettered in this sport: Sue Burbridge, Marilyn McIlroy, Eulalie Haley, Carol Cunningham, and Peggy Garner. Seven boys wore L. H. S. colors for the Juniors in boys' basketball, and seventeen did likewise in football, an addition of nine lettermen. This was under the coaching of Mr. Wirt Fowler, our new and popular coach. A pep squad was also organized, with fifteen Junior members. The music department, too, made an outstanding record, taking a II rating at the Louisiana Vocal Festival, in which eleven members of our class sang with the mixed chorus, and the ever popular band boasted nine members of our class, including Sue Burbridge as a majorette and Carol Cunningham as Drum Major. The glee club, too, had five Juniors in boys' glee club and eighteen in girls' glee club.

Will you ever forget the ice storm when much to the dismay of the students, school was dismissed for a few days? Or such sayings as were heard in the halls, as "Sing 'em," or Bill Guengerich's ever popular "Who pulled your chain?"

Well, we made it! After three full years of heartaches and happiness that comes with higher education, we finally entered the last lap—we, sixty Seniors, one of the largest graduating classes in the history of The Louisiana High School, are grateful that we have been able to follow the rapid growth of our Alma Mater—the new "little gym," the new faculty members, the pep squad, girls' basketball, and the biggest thrill of all—seeing the Bulldogs win the 1949 Quint City Football Championship, "navigated" by Coach Fowler. Thirteen Seniors were among the "Champs." Seven girls from the class were on the girls' basketball team, and six boys supported the male side of the sport.

Jo Ann Hughart was chosen Homecoming Queen of 1949, with Ann Batchelder as her attendant. Ann was escorted by Mackey Dee Love. Ann also attended the 1949 Barnwarming Queen and chose as her escort, Gene Murry.

Our officers for the "final round" were: President: Gene Murry; and Vice-President: Mackey Dee Love; Secretary-Treasurer: Marilyn McIlroy; and Student Council Representatives: Betty Jo Creamer and Gene Murry. John Crisan was elected to the position of Student Body President, with Bill Guengerich as Vice-President, and Jo Ann Wurtz as Secretary-Treasurer. We were sponsored by Mrs. Lucy English and, for the fourth year, Miss Hofrieter.

Our band made continued progress, attending "Band Day" at Missouri University and the Northeast Missouri Band Conference at Hannibal. The purchase of new red and gray uniforms, made possible by the contributions from Louisiana citizens, added the final touch! Eight members constituted our share of the band. The pep squad boasted fifteen members.

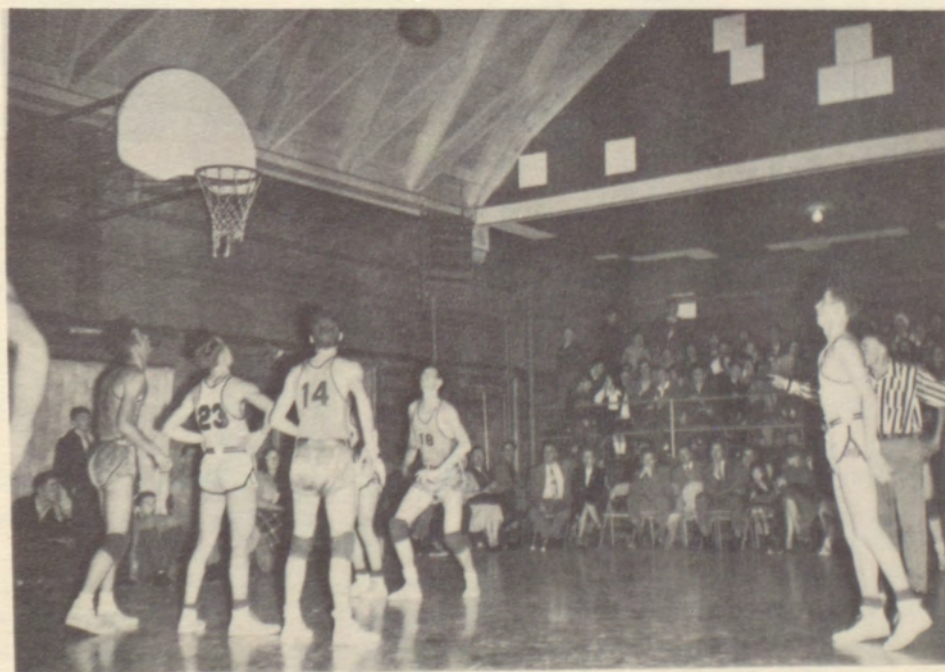
Peggy Garner shouldered the task of editing the yearbook this year, with twelve Seniors on the staff. "Handsome Harry" Elliott was elected President of the "L" Club, being ably assisted by Meade "Speedy" Spears as Vice-President, and Kenny Marsh as Secretary-Treasurer. Now you know the secret of the "L" Club's success!

As these memoirs go to press, exciting plans are forming in the back of our dignified minds. We think of the anticipated production of our Senior Play and of our final farewell, the Senior Farewell Dance, and Commencement.

Our high school ambitions are climaxed in the realization that we have shared in the olympiad of years which will long be remembered as one of the greatest in the history of Louisiana High School



From the 10th Annual Louisiana Tourney



UNDER



GRADUATE

Drown



First Row: Billy Allen, Betty Akers, Malvern Bankhead, Billy Bass, Lois Beck, Lou Ella Blackwell. Second Row: Bobby Bland, Darlene Burbridge, Dorothy Cable, Rule Campbell, Willella Chenoweth, Phyllis Clarke. Third Row: David Dove, Frank Clarkson, Jimmy Garner, Bobby Gast, Peggy Harvey, Frank Henderson. Fourth Row: Rena Mae Holland, Betty Hudson, James Jasper, Edward Kanan.

JUNIOR CLASS

The Junior Class of 1949 and 1950 was the smallest class this year but certainly did its share in all the school activities.

The class officers elected at the first of the year were: President, Frank Henderson; Vice-President John Shultz; Secretary-Treasurer, Betty Anne Hudson; Student council representative, Nina Strack. Betty Akers was re-elected as cheerleader. Frank Henderson was also the Freshman President. Other officers our Freshman year were: George Murry, Nina Strack and Jeannie Rector. The Sophomore officers were: Jimmy Garner, Nina Strack, Phyllis Clarke, and Jeanne Ann Wood.

They were well represented in all the sports with several boys going out for both football



First Row: Esther LaBar, George Luther, John Mitchell, Elmer Morton, Edward Muff, George Murry. Second Row: Katie Parsons, Frances Patton, Joan Pitzer, Jeanne Rector, Roberta Roan, Nancy Shive. Third Row: John Shultz, Kitty Simpson, Martha Sparks, Iola Steers, Charles Stoddard, Nina Sue Strack. Fourth Row: Jimmy Stuart, Dorothy Etta Turner, Katherine Waddell, Melva Walker.

and basketball. The girls were also represented in basketball. This was the girls second year for a chance at the team. There were seven Junior members in the L. H. S. Band, seven in glee club, two twirlers, and six Junior girls in the pep-squad. There were four Junior boys to be initiated into the "L" Club this year. Lou Ella Blackwell had the honor of being attendant to the queen at the Homecoming Football game. Kitty Simpson was the attendant to the annual Barnwarming given by the F.F.A. boys each year. The Juniors published the "L. H. S. Highlights" again this year with Mrs. Lucy English as their sponsor. Frank Henderson was the editor of the Highlights.

The Junior Class sponsors were: Mr. Woolford, who directed the Junior class play; and Mrs. Smallwood and Mrs. Hildebrand, who supervised the Junior-Senior Banquet.



First Row: Mr. William Ellis, Martha Shipley, Marjorie Bliss, Carolyn Perkins, Frances Shuford, Patsy Ross, Darlene Pollard, Helen Haliburton, Willene Winner, Jeanne Suddarth, Carolyn Creamer, Jane Waddell, Doris Trower, Mary Burns, Betty Stephens, Mrs. H. R. Burns, Jr. Second Row: Lois Carr, Eva Herriman, Jeanne Capps, John Podany, Charlie Clark, Robert Cadwallader, Eddie Holliday, W. C. Prewitt, Peter Donath, Wanda Umfleet, Opal Armbruster, Carol Bland, Joyce May, Eva Markovits, Annette Gabriel. Third Row: Jack Williams, Arlen Gibson, Kouwe Hofen, Bobby Jay Penrod, Donald Jett, Dale McMahill, Katherine Morton, Shirley Campbell, Melba Dewey, Margaret Hirst, Wanda Lamme. Fourth Row: James Pratt, Tommy Goodwin, Gene Campbell, Jack Sencenbaugh, Finis Corum, Myron Griffith, R. T. White, Larry Powell, Lewis Meloan, Joe Henderson, Charles Roan, Francis Craig.

SOPHOMORE CLASS

At the beginning of the school year, fifty-four students were enrolled as Sophomores. During the year one person left the class and one was added, thus making our membership the same at the end of the year.

The class elected Eddie Holliday, President; Myron Griffith, Vice-President; Joyce May, Secretary-Treasurer; and Darlene Pollard, Student Council Representative. When these Sophomores were Freshmen, they elected Peter Donath, President; Helen Haliburton, Vice-President; Darlene Pollard, Secretary-Treasurer; and Student Council Representative, Opal Armbruster.

The Sophomore attendant to the F.F.A. Barnwarming Queen was Eva Herriman. Joyce May was the Sophomore Homecoming attendant, with Myron Griffith as her escort.

The Sophomores were well represented in all sports. Twelve members of the class helped to make the football team the Quint City Conference Champs. Nine boys went out for basketball and five Sophomores were initiated into the "L" Club. Many of the girls went out for basketball, also. Four girls made the "A" team and six made the "B" team.

The class had four members in the pep squad; eleven in glee club; and seven in the band. There was one twirler, Darlene Pollard. We were proud to have Mrs. H. R. Burns, Jr., and Mr. William H. Ellis as our class sponsors.



First Row: Left to Right: Lucile Griffith, Margaret Chapuis, Jo Ann Tipton, Jean Fox, Margaret Traw, Janie Burnett, Elsie Sutton, and Marjorie Bliss. Second Row: Frankie Lonergan, Doris Jensen, Florence Briscoe, Maggie Corum, Barbara Spencer, Betty Lou Mann, Roberta Meyers, Oey Pitzer, Dortha Dell Love, Freda Bell Love, Carol Houchins, and Theresa Kuna. Third Row: Mr. Fred Rynearson, sponsor, Dortha Hughart, Dona Dameron, Norma Jean Blackwell, Norma Jean Ince, Barbara Windmiller, Madeline LaBar, Patsy Ruth Cadwallader, Joyce Lionberger, Shirley McCarty, Margaret Rose Weber, Faith Ann McKinzie, Sue Tucker, Alma Betts. Fourth Row: Lindell Love, Howard Alexander, Edgar Steers, John Lewellen, Billy Hughlett, Charles Rowe, Jimmy Fry, Billy Pratt, Bobby Baskett, Bill Niffen, Charles Kilby, Raymond Riley, Mr. Wirt C. Fowler, sponsor. Fifth Row: Don Crapnell, John Williams, Delbert Walker, Bobby Zirkle, Robert Quaitte, Preston Beck, Raymond Ferrell, Clayton Roan, Nick Nickles, Jackie Holland, Gene Todd, Ray Travis, Andrew Ehret, Bobby Murry, Fred Clarke, and Nicky Quattrochi.

FRESHMAN CLASS

The enrollment of the Freshman Class at the beginning of the 1949-1950 school-year was sixty-eight, four of which were dropped from the class roll during the first semester. Bobby Baskett, enrolled at the beginning of the second semester making a class of sixty-five.

Practically all the Freshmen were engaged in some extra curricular activity during the year. Jimmy Fry, Gene Todd, Raymond Riley, Charles Rowe, Billy Hughlett, and Lindell Love were football participants while Jimmy Fry, Gene Todd and Raymond Riley shouldered many of the basketball responsibilities for the "B" team. Twelve Freshmen were members of L. H. S. Band. They were; John Lewellen, Bob Bono, Nick Nickles, Jimmy Fry, Raymond Riley, Bar-

bara Windmiller, Roberta Meyers, Joyce Lionberger, Patsy Cadwallader, Jo Ann Tipton, Betty Mann, and Madeline LaBar.

The class officers were as follows: Charles Kilby, President; Jimmy Fry, Vice-President; Norma Jean Ince, Secretary-Treasurer; and Norma Jean Blackwell, Representative of the Student Council.

Both Freshmen boys and girls took active parts in the glee clubs during the year. The following were enrolled: Dortha Hughart, Florence Briscoe, Sue Tucker, Faith Ann McKenzie, Margaret Weber, Shirley McCarty, Barbara Spencer, Doris Jensen, Maggie Corum, Elsie Sutton, Nick Nickles, Nickey Quattrochi, Edgar Steers, Bob Bono, and Raymond Ferrell.





A
C
T
I
V
I
T
I
E
S



Seated: Left to Right: Gene Murry, Norma Jean Blackwell, Betty Jo Creamer, Darlene Pollard, and Frank Henderson. Standing: Mr. Lankford, Nina Sue Strack, Bill Guengerich, John Crisan, Joan Wurtz, Charles Kilby, and Eddie Holliday.

L. H. S. STUDENT COUNCIL

This year marked the third anniversary of the organization of the L. H. S. Student Council. The purpose of this group is to represent the student body in the many problems with which they and the faculty are confronted. The students may go to this group for opinions and suggestions as to raising money for school purposes and improving the conditions and appearance of the school.

The student council was composed of eleven members and was sponsored by our principal, Mr. Lankford. The President, Vice-President, and Secretary-Treasurer were chosen by the student body and the remainder of the group consisted of the four class Presidents and a representative from each class.

The Student Council also did much in planning the basketball tournament. They took care of such details as finding rooms for the out-of-town teams, making player passes and signs, and decorating the gym.

The Student Council members for the year were as follows: John Crisan, President; Bill Guengerich, Vice-President; Joan Wurtz, Secretary-Treasurer; Gene Murry and Betty Jo Creamer, Senior Representatives; Frank Henderson and Nina Sue Strack, Junior Representatives; Eddie Holliday and Darlene Pollard, Sophomore Representatives; Charles Kilby and Norma Jean Blackwell, Freshman Representatives.



Standing: Left to right: Elmer Morton, Nina Sue Strack, Patsy Ruth Cadwallader, Ann Batchelder, Opal Armbruster, Roberta Roan, and Robert Gast. Seated: Jimmy Garner, Esther LaBar, Frank Henderson, Katherine Waddell, and Mrs. Lucy English.

L. H. S. HIGHLIGHTS

The L. H. S. Highlights, official newspaper of Louisiana High School, is published by the Juniors and their sponsor, Mrs. Lucy English.

The school paper in previous years was published by the Junior Class in co-operation with the commercial department, but for the past three years has joined forces with the local town paper, the Louisiana Press Journal, and occupies a full page every two weeks.

The L. H. S. Highlights makes a complete coverage of school news and activities plus original poetry and feature articles.

STAFF MEMBERS

Editor-in-Chief.....	Frank Henderson
Assistant Editor.....	Katherine Waddell
Managing Editor.....	Esther LaBar
Exchange Editor.....	Robert Gast
Sports.....	Nina Strack (girls' sports)
	Jimmy Garner (boys' sports)
Home Economics.....	Katherine Waddell
Agriculture.....	Elmer Morton, Bobby Bland
Poet.....	Roberta Roan
Class Reporters.....	Senior, Ann Batchelder
	Junior, Doris Capps
	Sophomore, Opal Armbruster
	Freshman, Patsy Cadwallader
Sponsor.....	Mrs. Lucy E. English



First row: Bobby Murry, Robert Quaitte, Charlie Clark, Larry Powell, R. T. White, Charles Roan, W. C. Prewitt, Eddie Holliday.
Second row: Lindell Love, Jackie Holland, Andrew Ehret, Clayton Roan, Bobby Zirkle, Gene Todd, Charles Kilby, Howard Alexander, Francis Craig.
Third row: Mr. William H. Ellis, Kenneth Dayringer, Kouwe Hofen, George Murry, Leon Chapuis, Finis Corum, Gene Murry, Junior Fritz, Charles Rowe, Elmer Morton, John Crisan.
Fourth row: Bill White, James Pratt, Jimmy Guy Griffith, Mackey Love, Bobby Bland, Jerry Charlesworth, Charles Sparks.
 Those who do not appear in picture are: Dale Smith, Tommy Goodwin, John Dillender.

Vocational Agriculture is a course designed principally for farm boys attending high school. The purpose of the course is to improve the student's knowledge and experience in the farming business. The following courses are taught over a four-year period: Agriculture I—Beef, Hogs, Sheep, Pasture, and Legumes; Agriculture II—Dairy, Poultry, Small Grain, and Corn; Agriculture III—Feeds and Feeding, Soil and Soil Conservation; Agriculture IV—Farm Management, Livestock Sanitation and Diseases.

The Future Farmers of America organization is the leadership training group composed of all the 42 students enrolled in Vocational Agriculture. Officers for this year were: President, John Crisan; Vice-Presi-

dent, Mackey Love; Secretary, Leon Chapuis; Treasurer, Jimmy Guy Griffith; Reporter, Bill White; Sentinel, Gene Murry; Advisor, William H. Ellis.

One of the biggest events that highlighted the F. F. A. activities during the year was the annual Barnwarming square dance held last October. Ann Batchelder, a senior, was crowned queen by President John Crisan.

The Spanos Agriculture Award, an annual presentation of \$15.00, was won by Mackey Love in 1949. This year several boys worked hard in hopes that they, too, could be the recipient of the award.



FUTURE HOMEMAKERS OF AMERICA

The F. H. A. girls began the 1949-1950 year with enthusiasm and high hopes for another outstanding year of work and fun in the class and club. Sixty-two members joined the club. Officers elected were: Jane Waddell, President; Jo Ann Hughart, Vice-President; Donna Kilby, Secretary-Treasurer; Opal Armbruster, Parliamentarian; Margaret Chapuis, Historian; and Florence Briscoe, Song Leader. Club mothers for this year were Mrs. Price Hughart, Mrs. C. A. Clarkson, and Mrs. Walter Pitzer.

The Louisiana Chapter of the East Central District was honored on October 22, 1949, by being host to the annual F. H. A. Sub-District convention. Ten schools attended this all-day meeting. Wanda Lamme, a Louisiana girl, was elected by the ten schools as candidate for State Historian. Other high-

lights of the day were a fall fashion show, directed by Mrs. Claude Smallwood, and including girls from all the schools. The dresses were loaned by the various "Ladies' Shops" in each town represented. The closing event was a dance and tea given by the Louisiana chapter.

Seasonal events of the year were: a Christmas party, Valentine Dance, and the Mother and Daughter Tea which was held in March. A trip to Columbia for the State F. H. A. Day was made in April. Wanda Lamme was installed as state historian.

During the year many of the girls worked hard in hopes that they might receive the \$5.00 award given to the outstanding Home Economics student by the Dillender Grocery Store.



First Row: Jane Turnbull, Vic Mealy, Betty Jane Akers, Jack Bircher and Oey Pitzer. Second Row: Donna Kilby, Frances Patton, Joanne Thomas, Helen Haliburton, Doris Jensen, Frankie Lonergan, Freda Bell Love, Dorothy Dell Love, and Carole Houchins. Third Row: Marilyn McLroy, Mary Burns, Darlene Pollard, Carol Bland, Eva Markovits, Anita Dean, Iola Steers, Melva Walker, Dorothea Hughart, Mrs. Hildebrand, and Sue Tucker. Fourth Row: Peggy Garner, Phyllis Clarke, Lou Ella Blackwell, Betty Hudson, Peggy Dell Fry, Mary Rose Umfleet, Tommye Burks, Joan Hughart, Barbara Bankhead, and Kitty Simpson.

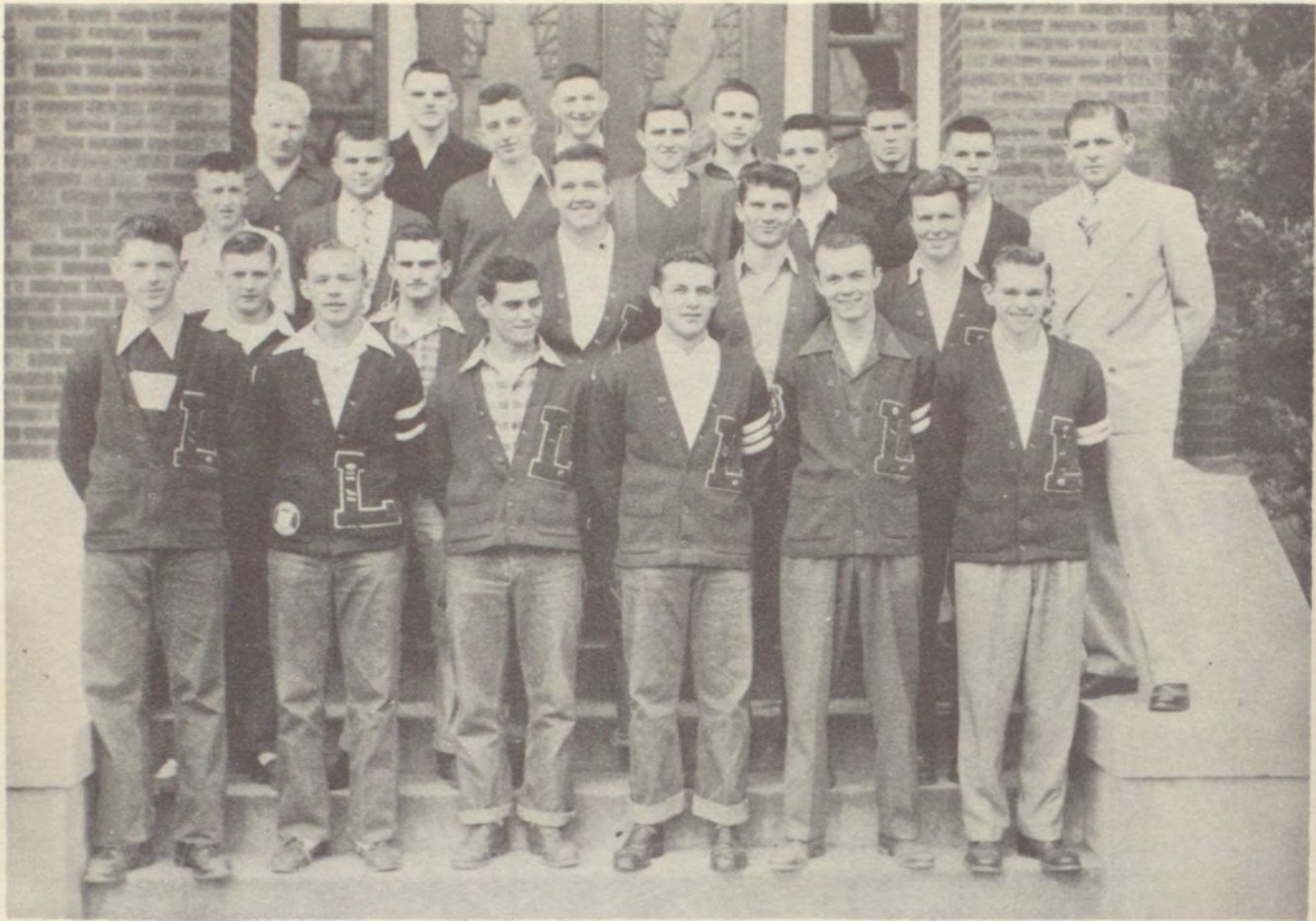
L. H. S. PEP SQUAD

The L. H. S. Pep Squad again this year made a colorful appearance at all sport events. Their uniforms carry out the school colors, red and white, and consist of red sweaters, white collars, white pleated skirts and red and white shoes.

Any girl of L. H. S. who so desired could become a member of the Pep Squad. The membership this year was forty-two and the girls were sponsored by Mrs. Hildebrand.

The Pep Squad has played an important part in supporting the team and boosting morale in football, basketball, and baseball. It is the hope of the student body and the faculty that this organization will thrive for many years.

Officers elected for the year were: President, Joan Hughart; Secretary-Treasurer, Peggy Garner; and Chairman of the Rules Committee, Peggy Fry.



First Row: Bill Guengerich, Junior Fritz, Gene Campbell, Harry Elliott, Meade Spears, and Kenny Marsh. Second Row: Billy Reed, Johnny Dillender, Paul Burks, Teddy Roberts, Gene Murry, and Coach W. C. Fowler. Third Row: Charlie Clark, John Crisan, George Luther, Tommy Goodwin, Elmer Morton, and Billy Bass. Fourth Row: Francis Craig, Jack Sencenbaugh, Anthony Stark, Averon Love, Finis Corum.

"L" CLUB

From the time of entering high school most boys entertain the ambition of becoming a member of one of the school's most exclusive organizations, the "L" Club. The members of this club have all lettered in at least one major sport and have successfully undergone the club's initiation. The purposes of this club are to provide an opportunity for members of the club to carry on club activities, to stimulate a high degree of school spirit, to furnish an incentive for boys who have not yet lettered, and to encourage sportsmanship and fair play in all phases of athletics.

At the beginning of the year there were fourteen members in the organization. During the year twelve members were initiated into the club. Mr. Galen Lankford, principal of L. H. S., was made an honorary member of the "L" Club because of his loyal support of the athletic teams.

On October 22 the "L" club made a trip to Champaign, Illinois, to see the Illinois-Michigan football game.

The "L" Club was sponsored by Coach Wirt C. Fowler. The club officers for this year were: President, Harry Elliott; Vice-President, Meade Spears; and Secretary-Treasurer, Kenny Marsh.



"SPEED WITH ACCURACY IS THE GOAL"



"NEVER TRANSCRIBE ANYTHING THAT DOES NOT MAKE SENSE"



"IF YOU LOVE LIFE YOU MUST BE CAREFUL"



"SILENCE IS GOLDEN—SHHH! SHHH!"



MEMO



HARRY ELLIOTT

KING



PEGGY GARNER

MEMO

QUEEN



First Row: Freda Bell Love, Carolyn Lankford, Lou Ella Blackwell, Gary Garner, Ann Batchelder, Gail Rynearson, Joyce May.
Second Row: Charles Kilby, Rule Campbell, Jo Ann Hughart, Mackey Dee Love, Myron Griffith.

L. H. S. HOMECOMING

The main event of the 1949 football season, the Homecoming game, came on Wednesday November second. Our opponent was Centralia and the Bulldogs of course were the victors with a score of 43 to 0.

A capacity crowd of boosters came out for the game, including a great many grads who were making their traditional return to their old Alma Mater.

The highlight of the evening came at the half of the game when the 1949 Homecoming Queen was crowned. The ceremony began with a drill by the band and pep squad. As the band played, the members of the pep squad arranged themselves in a heart around the throne. Then the team ran in making the arrow through the heart.

Last, but most important, came the Queen and her procession in royal splendor proceeding to the throne where she was crowned by the captain of the football team, Joe Penrod. The Queen, Miss Jo Ann Hughart, was attended by Ann Batchelder (senior), escorted by Mackey Dee Love; Lou Ella Blackwell (junior), escorted by Rule Campbell; Joyce May (sophomore), escorted by Myron Griffith; and Freda Bell Love (freshman), escorted by Charles Kilby. The train bearers were Carolyn Lankford and Gail Rynearson; and the crown bearer was Gary Garner.

The evening was brought to a close with a dance in the gymnasium. It was indeed a happy ending for an evening that had been so eventful and successful. (NOTE: The score was 43 to 0 in favor of the Bulldogs!)



Seated, left to right: Kitty Simpson, Ann Batchelder, Margaret Chapuis, Eva Harriman, and Oey Pitzer.
Standing, left to right: Bobby Bland, Gene Murray, John Crison, Mackey Love, Larry Powell, and Charles Kilby.

F. F. A. BARNWARMING

The Barnwarming, an annual event sponsored by the agriculture class, was held late in October this year in the gymnasium. The evening's entertainment consisted of square dancing, a few round dances and the crowning of the Barnwarming Queen and her attendants chosen by the "Ag" boys.

This year's queen was Margaret Chapuis and she was escorted by Mackey Love. The attendants were: Freshman, Oey Pitzer escorted by Charles Kilby; Sophomore, Eva Harriman escorted by Larry Powell; Junior, Kitty Simpson escorted by Bobby Bland; and Senior, Ann Batchelder escorted by Gene Murray. The queen was crowned by John Crison, president of the Future Farmers of America.

Decorations such as rail fences, bales of hay and stalks of corn and the music of Andy Cordes and his orchestra helped make this evening one to be remembered.

SPECIAL AWARDS

D.A.R. PILGRIMAGE

Each year the faculty of Louisiana High School selects three girls from the senior class as candidates for the D. A. R. good citizenship award. These girls are chosen on the basis of service, patriotism, leadership, dependability, and scholarship. One of these three girls is then selected by the popular vote of the senior class as their D. A. R. Pilgrim of the year.

This year the three girls chosen were Eulalie Haley, Marilyn McIlroy, and Peggy Dell Fry. The class elected Peggy Dell Fry to represent them. A competitive test was given all the nominees throughout the state. This test was concerned with the history of the United States from the Revolutionary War to the present time. The girl ranking first in the state was declared "Missouri Pilgrim" and received a one-hundred dollar government bond.

OUTSTANDING SOPHOMORE

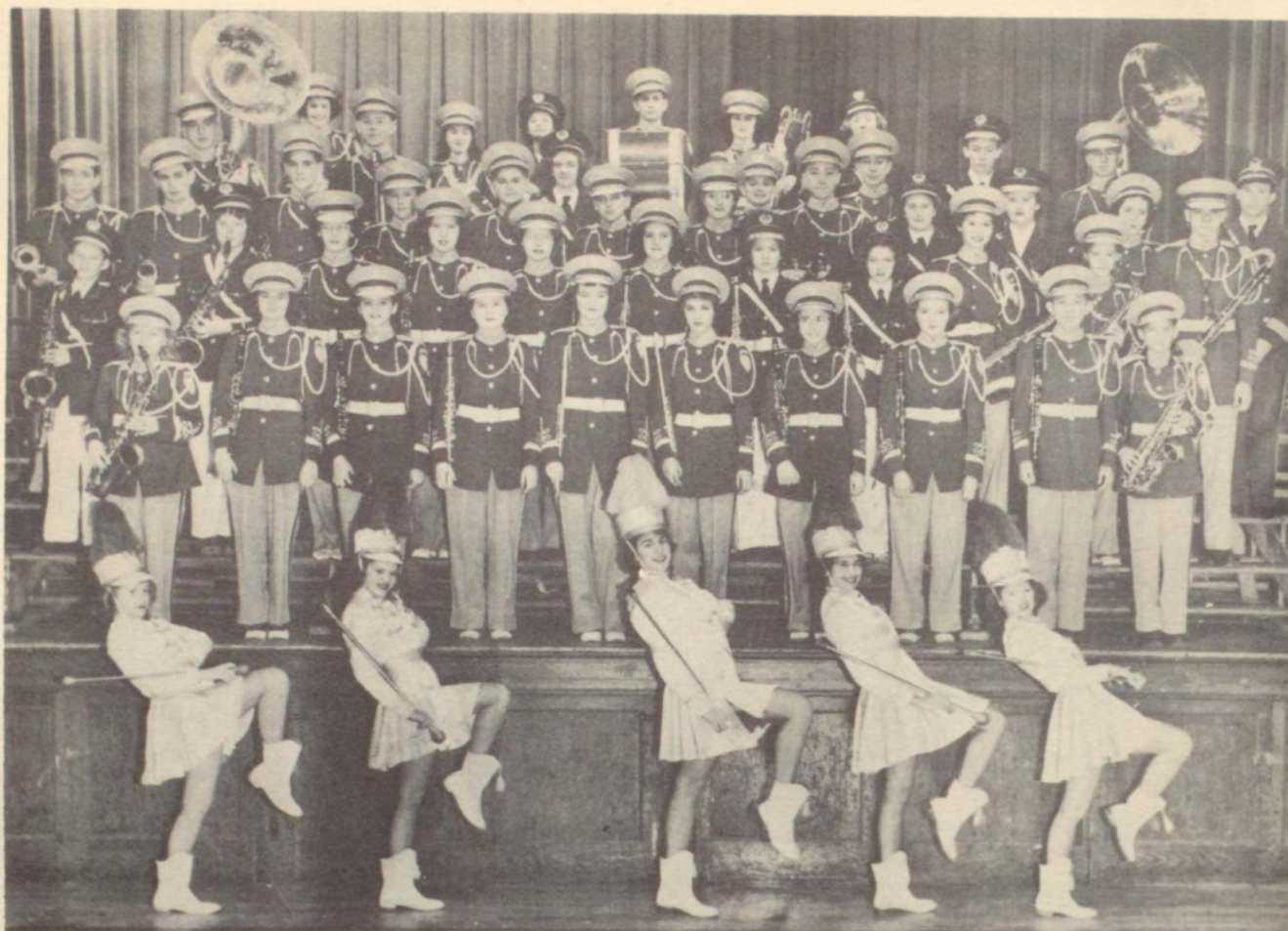
Every year the faculty of L. H. S. selects five students from the Sophomore Class who in their estimation have the best qualifications for community leadership and who rank in the upper fourth of the class. From these five students chosen by the faculty, one is elected by the student body as its outstanding sophomore.

This year the outstanding sophomore was Lois Jean Suddarth. Lois, along with other outstanding sophomores from other schools in Missouri, was given a trip to Jefferson City on April 14 by the Women's Federated Clubs.



MUSIC, ART, DRAMA

—Bircher—



L. H. S. BAND

Majorettes: Peggy Harvey, Nancy Shive, Carol Cunningham (drum major), Darlene Pollard, Sue Burbridge.

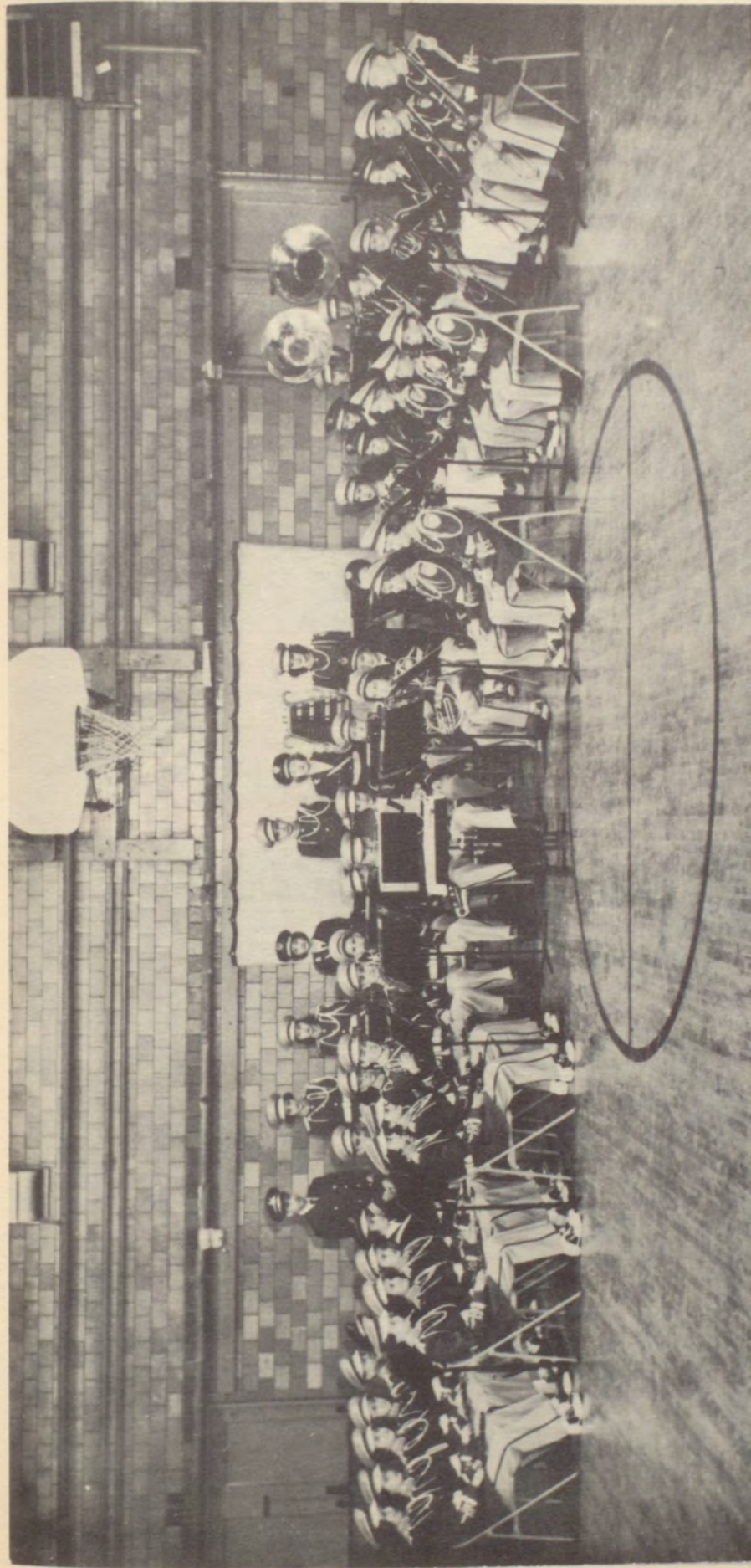
First row: Sue Daniels, Lois Suddarth, Patsy Cadwallader, Betty Creamer, Eulalie Haley, Joyce May, Joan Tipton, Nina Strack, Jim Turley, Larry Bono.

Second row: Charles Walters, Pat Campbell, Madaline LaBarr, Frances Shuford, Doris Trower, Betty Mann, Edith Lambert, Norma Jean Holliday, Bettye Stephens, Marilyn Thomas, James Jasper.

Third row: Dave Dove, Bob Campbell, Jimmy Fry, Nick Nickles, Bobby Phillips, Bobby Bono, Barbara Windmiller, Raymond Riley, Alma Betts, Annette Gabriel, Wilene Winner, Mr. Fred Rynearson.

Fourth row: George Luther, Bill Guengerich, Jonann Pritchett, Charles Scott, John Lewellen, John Skillern, Frank Henderson.

Fifth row: Suzanne Dungan, Lorine Cozad, Robert Meyers, Dale McMahill, Beverly Brown, Shirley Campbell.



LOUISIANA HIGH SCHOOL BAND
Mr. Fred Rynearson, Director

SAXOPHONES: Betty Stephens, Larry Bono, Sue Daniels, Marilyn Thomas, Pat Campbell, and Charles Walters. **TRUMPETS:** Bob Campbell, Dave Dove, Bob Bono, Nicky Nickles, Jimmy Fry, Raymond Riley, Barbara Windmiller, and Robert Phillips. **CLARINETS:** Patsy Cadwallader, Lois Suddarth, Joan Tipton, Betty Mann, Madeline LaBar, Frances Shuiford, Nina Strack, Doris Trower, Betty Creamer, and Jimmy Turley. **BASS CLARINET:** Jimmy Jasper. **BASSES:** George Luther, Frank Henderson. **HORN:** Willene Winner. **TROMBONES:** Bill Guengerich, John Lewellen, Charles Scott, Jonann Pritchett, and John Skillern. **PERCUSSION:** Suzanne Dungan, Lorene Cozad, Roberta Meyers, Joyce Lionberger, and Dale McMahl. **BELLS:** Beverly Brown. **FLUTES:** Joyce May and Eulalie Haley.

BAND

This year marks the first anniversary of the Louisiana High School Band. The band, under the direction of Mr. Fred Rynearson, has grown in one year from a small group of fifteen into a well-balanced organization of around forty members. The increase in size of this group has not only created an interest in music in the schools, but has also made the band much more in demand for participation in civic affairs.

The evident need of new uniforms was quickly remedied by the Band Parents' Club. This club formed several different committees to raise funds for the purchase of the uniforms. The band itself made several public appearances to help in this project, such as the summer program of concerts.

Officers were chosen at the beginning of school as follows: President, Frank Henderson; Vice-President, Bob Campbell. These officers presided the rest of the school year by taking charge of most of the activities of the band.

Basketball and football games were always accompanied by the band, with special acts by the drum majorettes at the football "Homecoming", and at the Tenth Annual Basketball Tournament in January.

After the football season, the band began practice on its Christmas concert, where many new instruments were introduced. These included a bell-lyra and a bass clarinet.

The spring program included the Quint-City Band Festival held in Louisiana, in which five surrounding bands participated. The spring concert was given on April 20, following the contests at Warrenton, Monroe City, and Kirksville. In these contests were entered solos, small ensembles, and, at Kirksville, the band itself.

A Chautauqua circuit playing in Louisiana to raise funds for the summer recreation program was assisted by the band in April. The first tour ever made by the band of Louisiana was made in April. Mr. Rynearson took his musicians to such towns as Elsberry, Clarksville, and Pleasant Hill on a two-day tour, the 25-26 of April.

Such activities as Band Day at Missouri University, the Marching Band Festival at Hannibal High, the welcome to Santa Claus, and the Christmas caroling helped make up a very good 1950 season.



GIRLS' GLEE CLUB

First Row: Melba Ann Dewey, Barbara Bankhead, Shirley McCarty, Elsie Sutton, Florence Briscoe, Maggie Corum, Barbara Spencer, Carolyn Perkins, Doris Jensen, Margaret Rose Weber, Faith Ann McKinzie, and Joyce May. Second Row: Darlene Pollard, Marilyn McIlroy, Dortha Hughart, Sue Tucker, Lou Belle Higginbotham, Phyllis Clarke, Nina Strack, Bettye Stephens, Nancy Shive, Annette Gabriel, Doris Trower, and Carolyn Creamer. Third Row: Jeanne Rector, Shirley Campbell, Nancy Flaherty, Betty Creamer, Beverly Brown, Joan Hughart, Peggy Fry, Eulalie Haley, Carol Cunningham, Lou Ella Blackwell, Carole Bland, Eva Markovits, Jo Ann Thomas, Peggy Harvey, Betty Ruffin, and Mr. Fred Rynearson.



BOYS' GLEE CLUB

First Row: Edgar Steers, Don Crappnell, Nick Nickles, Jimmy Fry, John Mitchell, Raymond Ferrell, and Nicky Quattrochi. Second Row: Frank Henderson, Myron Griffith, Jimmy Guy Griffith, Vic Mealy, Bill Guengerich, Leon Chapuis, Raymond Riley, Bob Campbell, Kenneth Marsh, and Mr. Fred Rynearson.



First Row: (seated) Peggy Garner, Eulalie Haley. Second Row: (standing) Peggy Dell Fry, Miss May Hofrieter, director, Beverly Brown, Mary Rose Umfleet, Barbara Bankhead, John Crison, Carol Cunningham. Third Row: Charles Stephens, Vic Mealy, Bill Guengerich, Meade Spears.

Senior Play

“STRANGER IN THE NIGHT”

Presented May 5, 1950

CAST

Sylvia Lee
 Mable Crane
 Grant Terry
 J. T. Rutledge
 Velda Stevens
 Clifford Newkirk
 Nona Pollard
 Eddie Beach
 Rose Jordan
 Sam Fisk
 Marcella Bender
 Sandra King

Eulalie Haley
 Peggy Garner
 Meade Spears
 Vic Mealy
 Carol Cunningham
 Bill Guengerich
 Beverly Brown
 Charles Stephens
 Peggy Dell Fry
 John Crison
 Mary Rose Umfleet
 Barbara Bankhead

Miss May Hofrieter, Director



Seated: Mr. William Woolford, Director.

First Row: Peggy Harvey, Frances Patton, Nancy Shive, Nina Sue Strack, Esther LaBar, Betty Hudson.

Second Row: Bobby Gast, Malvern Bankhead, Bill Bass, George Luther, Frank Henderson, Dave Dove, Jimmy Garner.

JUNIOR PLAY

"UNCLE FRED FLITS BY"

CAST

Pongo Twistleton
 The Crumpet
 Uncle Fred
 A Maid
 Julia Parker
 Wilbur Robinson
 Mr. Parder
 Mrs. Parker
 Judge Basher
 Lady Duff-Wilson
 Mary
 Miss Dougal
 Miss Spencer
 A Policeman

Frank Henderson
 Jimmy Garner
 George Luther
 Roberta Roan
 Nina Sue Strack
 Malvern Bankhead
 Robert Gast
 Nancy Shive
 Dave Dove
 Betty Hudson
 Peggy Harvey
 Esther LaBar
 Frances Patton
 Bill Bass

Mr. William Woolford, Director



Standing: Joan Wurtz, Peggy Garner, Ann Batchelder, Marilyn McIlroy, and Eulalie Haley. Seated: Mrs. Fern Todd, office secretary.

OFFICE GIRLS

With all this help, Mr. Lankford should be the envy of every business man. Six bright and cheery secretaries at his beck and call.

This is Mrs. Todd's first year at L. H. S. and she has done a fine job as a secretary along with winning the good will and respect of the student body. The five student office girls came in during their free periods to help type letters, transcripts, take dictation, answer the telephone, make out grade cards, and do all the usual and sometimes unusual procedures of a principal's office.

The help that is so generously given by the office girls is truly appreciated. Because of their co-operation and helpfulness the school would like to express in the most sincere manner, its gratitude to Mrs. Todd and the office girls. Maybe the privilege of having their picture in the 1950 Alamo will partially repay them for their efforts during the past school year.



SPORTS





First Row: Bobby Jay Penrod, Frankie Clarkson, Larry Powell, R. T. White, Charlie Clark—manager, Gene Todd, Lindell Love, Billy Hughlett, Charles Rowe.

Second Row: Francis Craig, Raymond Riley, Bobby Gast, Finis Corum, Johnny Dillender, Elmer Morton, Bill Henry, Jack Tarants, Joe Penrod.

Third Row: Bill Bass, Charles Stephens, James Pratt, Junior Fritz, Gene Campbell, Harold Elliott, George Murry, Dale McMahill, Coach Wirt C. Fowler.

Fourth Row: Jimmy Garner, Averon Love, Jack Sencenbaugh, Jimmy Fry, Tommy Goodwin, George Luther, Kenny Marsh.

Fifth Row: Harry Elliott, Anthony Stark, Paul Burks, Gene Murry, Teddy Roberts, Bill Guengerich.

FOOTBALL SCHEDULE

Louisiana	6	Pleasant Hill	0
Louisiana	12	Pittsfield	6
Louisiana	0	M. M. A.	16
Louisiana	6	St. Peters	0
Louisiana	6	McCooey	0
Louisiana	0	Shelbina	0
Louisiana	6	Mexico	26
Louisiana	43	Centralia	0
Louisiana	26	Palmyra	0

ON, OH BULLDOGS

On, oh Bulldogs, on, oh Bulldogs
 Fight right through that line.
 Take the ball from our opponent
 Touchdown sure this time, Rah, Rah, Rah!
 On, oh Bulldogs, on, oh Bulldogs
 Fight as for your fame.
 Fight, fellows, fight,
 And we will win this game!

FOOTBALL

The Louisiana Football Team started off its season with eleven returning lettermen playing their second year under the coaching of Wirt C. Fowler. They were: Gene Murry, Harry Elliott, Harold Elliott, Joe Penrod, Bill Guengerich, Teddy Roberts, Jack Tarrents, Kenny Marsh, John Dillender, Gene Campbell, and Bill Henry.

The 1949 squad achieved fame as they ran through their schedule with a six won, two lost, and one tie record. That was a great achievement but the greatest achievement was realized on the night of Nov. 11 when they defeated Palmyra to win undisputed championship of the Quint City Conference.

The Bulldogs were not to be defeated in conference play although they were tied 0-0 by Shelbina. In other conference games the Bulldogs defeated McCooley 6-0, Centralia 43-0 in the L. H. S. Homecoming, and Palmyra 26-0 to clinch the conference title.

In non conference games the Bulldogs lost to M. M. A. and Mexico and won from Pleasant Hill, Pittsfield, and St. Peters. The Pittsfield game was one of the best games of the year as the Bulldogs completely outfought their rivals from Pittsfield and won 12-6.

Coach Fowler awarded 22 boys with letters for their efforts in the victorious season. They were: Junior Fritz, Averon Love, George Luther, Francis Craig, Finis Corum, Elmer Morton, Jack Sencenbaugh, Anthony Stark, Tommy Goodwin, Billy Bass, Bill Guengerich, Teddy Roberts, Gene Murry, Harry Elliott, Jack Tarrants, Joe Penrod, John Dillender, Harold Elliott, Gene Campbell, Kenny Marsh, Bill Henry and Charles Clark, Mgr.





First Row: Peggy Garner, Eulalie Haley, Nancy Shive, Sue Burbridge, Marilyn McIlroy, Betty Jane Akers, Peggy Harvey.
 Second Row: Mary Rose Umfleet (Manager), Barbara Bankhead, Carole Bland, Eva Markovits, Tommie Burks, Carol Cunningham, Darlene Pollard, Mary Burns, Kitty Simpson, Mrs. Robert Hildebrand, Coach.

SCORES FOR THE GIRLS' 1949-1950 BASKETBALL SEASON

Louisiana	22	Silex	46
Louisiana	30	Eolia	45
Louisiana	26	Farber	57
Louisiana "B"	21	Farber "B"	24
Louisiana	39	Silex	56
Louisiana	46	Eolia	46
Louisiana "B"	46	Eolia "B"	21
Louisiana	27	Bellflower	29

Girls' basketball started out for its second consecutive year in full swing when the girls reported for practice at 8:00 in the morning one day in October. From then until the end of the girls' season they met for morning practice.

Mrs. Hildebrand was the girls' coach and Mary Rose Umfleet was elected manager of the team.

Thirty-one girls went out for basketball and these were divided into "A" and "B" teams. The "A" team girls were: Seniors; Sue Burbridge (captain), Marilyn McIlroy (co-captain), Eulalie Haley, Carol Cunningham, Tommie Burks, Peggy Garner, Barbara Bankhead. Juniors; Nancy Sue Shive, Peggy Jean Harvey, Betty Jane Akers, Kitty Simpson, and Sophomores; Eva Markovits, Darlene Pollard, Carole Bland, and Mary Burns. The "B" team girls were: Juniors; Jeanne Rector, Melva Walker, Sophomores; Margaret Hirst, Shirley Campbell, Joyce May, Doris Trower, Lois Jean Suddarth, Carolyn Creamer, and Freshmen; Barbara Spencer, Patsy Ruth Cadwallader, Joyce Lionberger, Sue Tucker, Madelene LaBar, Maggie Corum, Norma Jean Blackwell, and Betty Mann. Since this was the first time most of the "B" team girls had ever played basketball, some of the "A" team girls helped them out with their games. These girls were: Barbara Bankhead, Nancy Sue Shive, Betty Jane Akers, Kitty Simpson, Carole Bland, and Mary Burns.

Six games were scheduled for the season for the "A" team and two for the "B" team. The "B" team did a good job, winning one of their two games by a large margin. In these games, Mary Burns was high point player with twenty-seven points, Nancy Sue Shive was second with seventeen, and Lois Jean Suddarth was third with ten.

The "A" team tied one game, but lost the other five. At the first of the season the other teams' superior playing and greater experience completely outclassed them, but as more games were played there was a marked improvement. The last two games were the most exciting and showed the best playing when they tied Eolia 46-46 and lost to Bellflower by the slim margin of 29-27. In "A" team games, Eulalie Haley was high point girl with fifty-eight points and Sue Burbridge was second with fifty-one points.

Although the team was not a victorious one, the girls really enjoyed playing and showed it by their determination and good sportsmanship. The girls who lettered in basketball this year were: second year letters; Sue Burbridge, Marilyn McIlroy, Eulalie Haley, Carol Cunningham, Peggy Garner, Nancy Sue Shive, Peggy Harvey, Betty Jane Akers, and first year letters; Tommie Burks, Barbara Bankhead, Kitty Simpson, Eva Markovits, Darlene Pollard, Carole Bland, and Mary Burns. Mary Rose Umfleet received a manager's letter.

In March the girls started spring training and they are looking forward to next year and hope to have a winning team.



First Row: Dick Skeen, Jimmy Stuart, Averon Love, Edward Kanan.

Second Row: Kenny Marsh, Meade Spears, Paul Burks, George Luther, Jimmy Garner, Coach Wirt C. Fowler.

BASKETBALL "A" TEAM SCHEDULE

Louisiana	25	Silex	29
Louisiana	49	Eolia	19
Louisiana	27	Troy	38
Louisiana	36	Jonesburg	22
Louisiana	29	Warrenton	33
Louisiana	38	West Pike	34
Louisiana	45	Vandalia	42
Louisiana	30	Silex	37
Louisiana	41	Pleasant Hill	28
Louisiana	37	McCooley	53
Louisiana	28	Bellflower	42
Louisiana	35	Elsberry	48
Louisiana	45	Paris	46
Louisiana	46	Clarksville	45
Louisiana	39	Clarksville	36
Louisiana	37	West Pike	39
Louisiana	22	Bayless	30
Louisiana	19	Mexico	51
Louisiana	32	Elsberry	36
Louisiana	38	West Pike	34
Louisiana	34	Pleasant Hill	53
Louisiana	42	Clarksville	34
Louisiana	38	Elsberry	36
Louisiana	56	Clarksville	32
Louisiana	29	Bowling Green	55
Louisiana	26	Bellflower	49

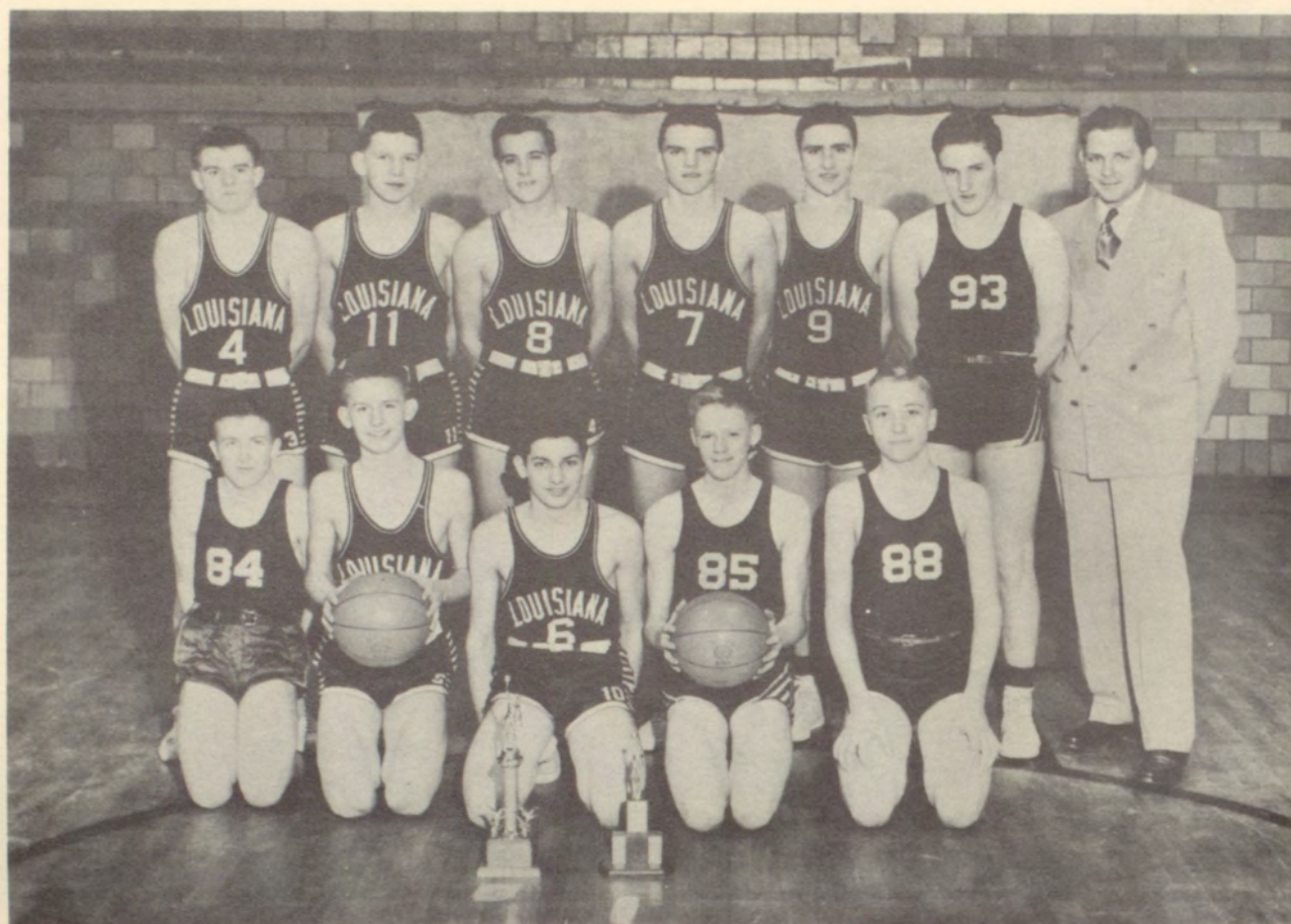
BASKETBALL

The Bulldogs began the 1949-50 season with four returning lettermen. They were: Kenny Marsh, Teddy Roberts, John Dillender, and Meade Spears. The Bulldogs were only fairly successful during the season as they compiled eleven wins out of twenty six games.

In tournament play the Bulldogs won four and lost six, while playing scheduled games the Bulldogs won seven and lost nine. In their own tourney the Bulldogs defeated Clarksville in their first game, but lost their second game to West Pike. In the finals the Bulldogs met Bayless for third place and were defeated. The season ended with the Sub-Regional at Troy, Missouri. The Bulldogs advanced to the final rounds by defeating Elsberry and Clarksville. In the semi-final and final games they lost to Bowling Green and Bellflower.

The "B" team had a fine team and an excellent record. The Bullpups besides winning ten and losing only two scheduled games, compiled a 5-1 tournament record. The Bullpups won the third place trophy at the Warrenton tourney by defeating Wright City and Bowling Green before losing to Warrenton. The Bullpups won the first "B" team tourney ever held in L. H. S. by sweeping their three games with Elsberry, Bowling Green, and Pittsfield.

Coach Fowler awarded basketball letters to seventeen boys for the season of 1949-50. They were: Jack Sencenbaugh, Jimmy Fry, Bill Henry, Tommy Goodwin, Gene Campbell, Paul Burks, Kenneth Marsh, Jimmy Garner, Meade Spears, George Luther, Edward Kanan, Gene Todd, Avera Love, Jimmy Stuart, Dick Skeen, Myron Griffith, Charle Clark, Mgr.



First Row: Charlie Clark, Myron Griffith, Gene Todd, Joe Henderson, Raymond Riley.
 Second Row: Bill Henry, James Pratt, Jimmy Fry, Jack Sencenbaugh, Tommy Goodwin, Jack Williams,
 Coach Wirt C. Fowler.

LOUISIANA "B" BASKETBALL TEAM SCORES

Louisiana	40	Wright City	16
Louisiana	21	Warrenton	31
Louisiana	26	Bowling Green	19
Louisiana	42	West Pike	39
Louisiana	61	Vandalia	30
Louisiana	22	Pleasant Hill	32
Louisiana	46	McCooey	25
Louisiana	27	Bellflower	24
Louisiana	62	Elsberry	31
Louisiana	44	Bowling Green	18
Louisiana	40	Pittsfield	30
Louisiana	47	Elsberry	26
Louisiana	66	Paris	35
Louisiana	51	Clarksville	18
Louisiana	22	Mexico	35
Louisiana	56	Elsberry	39
Louisiana	49	West Pike	43
Louisiana	41	Pleasant Hill	26



Seated: Betty Jane Akers, "Oey" Pitzer, Jane Turnbull.
Standing: Vic Mealy, Jack Bircher.

CHEERLEADERS

Here they are, the backbone of the L. H. S. Pep Squad. We speak of the first five on the basketball team and now we see the first five of the moral boosters.

The student body elected three new cheerleaders this year, "Oey" Pitzer, Vic Mealy, Jack Bircher and re-elected Betty Akers, and Jane Turnbull for their second year. This is the first time for several years that L. H. S. has had male cheerleaders, and we can't praise them enough.

The cheerleaders are always an essential part of every sport season and this group, through a lot of practice and hard work, helped the Bulldogs on to many victories. Congratulations on a swell job kids!

SCHOOL DAZE

1949-1950

- Sept. 6 Registration (oh, gee, the snap courses were difficult to find!)
- Sept. 16 Football—Pleasant Hill—There. (What a wonderful last quarter!)
- Sept. 19 P. T. A. Reception for Teachers. (A mighty nice gesture!)
- Sept. 23 Football—Pittsfield—Here. (Revenge, oh, sweet revenge!)
- Sept. 30 Football—M. M. A.—Here. (The big bruisers!)
- Oct. 7 Football—St. Peters—Here. (A fine game, boys!)
- Oct. 14 Football—McCooley—There. (Oh, they stole the ball!)
- Oct. 17 F. F. A. Barnwarming Party. (Right and left till you come around!)
- Oct. 21 Football—Shelbina—There. (We were knee deep in trouble!)
- Oct. 22 F. H. A. District Meeting. (A might fine day!)
- Oct. 26 Band Assembly. (Band was wonderful, but—)
- Oct. 28 Football—Mexico—Here. (Better luck next time!)
- Nov. 3 Football—Centralia—Here. (Homecoming, a cold reception.)
- Nov. 11 Football—Palmyra—There. (Sorry, oh so sorry!)
- Nov. 17 Assembly—The Mississippians. (Greatly enjoyed!)
- Nov. 19 P. T. A. Square dance. (A jolly good time!)
- Nov. 22 Basketball—Silex—Here. (Ouch! A double defeat!)
- Nov. 30 Basketball—Eolia—Here. (Two good games—one victory!)
- Dec. 1 Municipal Concert. (A talented trio!)
- Dec. 1-3 Warrenton Tournament. (Yeah, "B" team!)
- Dec. 6 Basketball—West Pike—Here. (Another sweet victory!)
- Dec. 9 Basketball—Vandalia and Farber—There. (Boys and girls parted ways!)
- Dec. 13 Basketball—Silex—There. (Ouch! they did it again!)
- Dec. 16 Basketball—Pleasant Hill—Here. (Hurrah for the "A" team!)
- Dec. 19 Christmas Concert. (Congratulations, Mr. Ryneerson!)
- Dec. 21 Christmas Assembly. (Nice Going, Speech Class!)
- Dec. 27 Alumni Banquet. (A fine banquet and a nice get-together!)
- Dec. 28 Christmas Dance. ("Now, remember this is **not** a school activity" unquote!)
- Jan. 6 Basketball—Bellflower—Here. (Ouch! Ouch!)
- Jan. 11-14 Louisiana Tourney. (Were really proud of the "B" team!)
- Jan. 17 Basketball—Elsberry—There. (A 50-50 proposition!)
- Jan. 20 Basketball—Paris—Here. (Who thought Burks could have gotten in the lane?)
- Jan. 27 Basketball—Clarksville—There. (Oh, Meade, how you can score!)
- Feb. 3 Basketball—Mexico—There. (And to think that we were their guests!)
- Feb. 7 Basketball—Elsberry—Here. (Pratt's 24 points might have hurt us!)
- Feb. 9 F. H. A. Dance. (Another nice party!)
- Feb. 10 Basketball—West Pike—There. (An evening well spent!)
- Feb. 14 Basketball—Pleasant Hill—There. (Well, the "B" team won, didn't they?)
- Feb. 17 Basketball—Clarksville—Here. (What a sweet last round-up!)
- Feb. 23 Assembly—Ben Hammond. (Remember his picture of the Old Mill?)
- Feb. 22-25 Sub-Regional Tournament at Troy. (A ball is more valuable than a trophy!)
- March 1 Municipal Concert. (An artist on the keyboard!)
- March 3 Assembly—George Demott. (Eulalie just loves electricity!)
- March 9 Senior Movie. ("Study Hall Canteen.")
- March 10 Junior Square Dance. (Was a nice "little" party!)
- March 21 Band Festival. (Five nice bands!)
- March 24 F. F. A. Agriculture Banquet. (A fine success. Let's do it again!)
- March 31 Basketball—Seniors vs. Juniors. (It pays to stay in training!)
- April 3 Municipal Concert. (Lovely—we mean her singing!)
- April 8 Kirksville Band Festival. (Boy, were we proud!)
- April 11 Senior Amateur Program. (Major Bowles Bankhead's Show!)
- April 12 A. A. U. W. Tea. (Would you like a cup of tea?)
- April 13-14 Junior Play. (Where Uncle Fred Flitted By!)
- April 21 Spring Music Concert. (More orchids to Mr. Ryneerson!)
- April 25-26 Band Tour. (And we make music wherever we go!)
- May 4-5 Senior Play. (Sorry, folks, but this is our last and final production!)
- May 12 Junior-Senior Prom. (Truly, the big night of the year!)
- May 14 Baccalaureate. (The beginning of the end!)
- May 18 Commencement. (The finis!)
- May 19 School Out. (Oh boy! !)

Bulletins-Ads-

wrecks-All
Drug store
Roots
Medicines
herbs

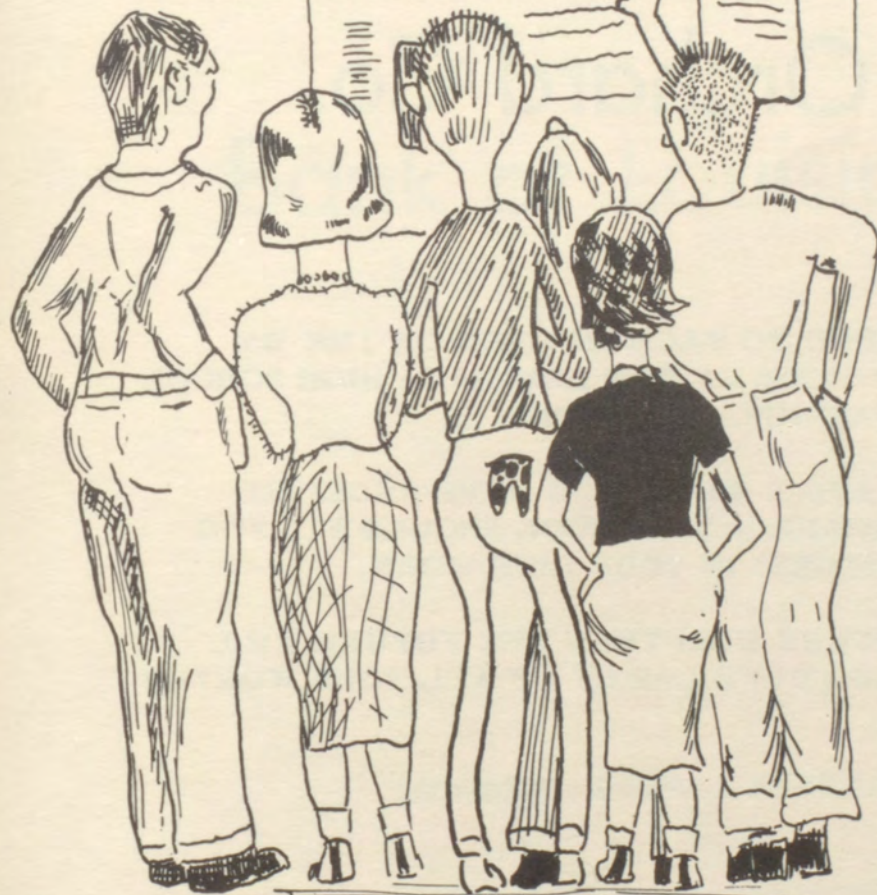
RADIOS
levision

EAT

Hot
Chi
Coff
Soda

ALAMO

1950



— Binchen —

ADVERTISING

CLASS OF 1950

CONGRATULATIONS'

Stark Bros. Nurseries & Orchard Co.

WISH TO EXTEND TO EACH MEMBER OF THE 1950
GRADUATION CLASS OF THE LOUISIANA HIGH SCHOOL
OUR HEARTY CONGRATULATIONS.

THE PREPARATION WHICH YOU HAVE RECEIVED
AT THE LOUISIANA HIGH SCHOOL SHOULD FIT YOU
WELL FOR SUCCESS IN YOUR LIFE WORK.

IT IS OUR SINCERE WISH THAT THE FUTURE WILL
BRING TO YOU FULFILLMENT OF ALL YOUR WORTHY
AMBITIONS.



SERVING THIS COMMUNITY
CONTINUOUSLY MORE THAN
SIXTY-TWO YEARS

Bank of Louisiana

SINCE 1887

MEMBER FEDERAL DEPOSIT

INSURANCE CORPORATION

CAPITAL \$50,000.00

Wm. B. Haley, President
J. H. McCune, Vice-President

Lloyd Waugh, Cashier
W. A. Reineking, Asst. Cashier

The Mercantile Bank



EVERY BANKING SERVICE CONSISTENT WITH
SOUND BUSINESS PRACTICE AND WILL FULL
CONSIDERATION FOR THE WELFARE OF OUR
CUSTOMERS AND THE ENTIRE COMMUNITY.

MEMBER FEDERAL DEPOSIT INSURANCE CORPORATION

LOUISIANA



MISSOURI

FOR MORE THAN

SEVENTY-FIVE YEARS

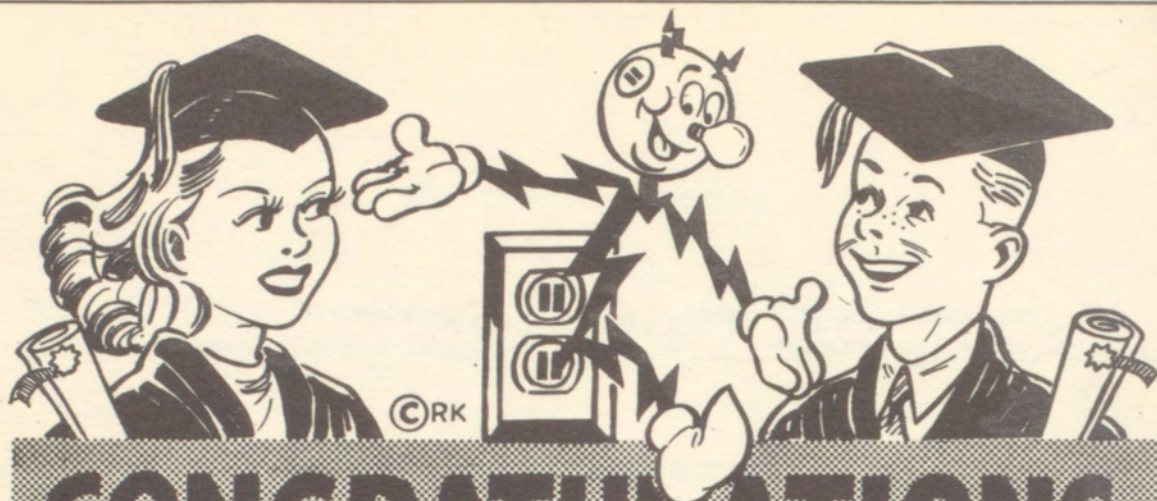
LaCrosse Lumber Co.

HAS BEEN

A

LOUISIANA INSTITUTION

1873 - 1950



CONGRATULATIONS

GOOD LUCK AND MORE POWER TO YOU!

Reddy Kilowatt

Your Electrical Servant

MISSOURI EDISON COMPANY

Compliments of

GREGORY'S

Louisiana, Missouri

Where Smart Women Shop

Q. R. Johnson

WATCHES

DIAMONDS

JEWELRY

STEP IN and LOOK AROUND

Phone 69

Louisiana,

Missouri

Tom Boy Food Store

YOU RATE MORE AT

A TOM BOY STORE

Louisiana,

Missouri

Compliments Of

Kings Machine Shop

Your Patronage

Appreciated

114 or 5th Street

LOUISIANA MILLING COMPANY

GRAIN — FLOUR — FEED — COAL

Elevators: Louisiana, Mo., Ashburn, Mo.

PHONE No. 1

LOUISIANA, MO.

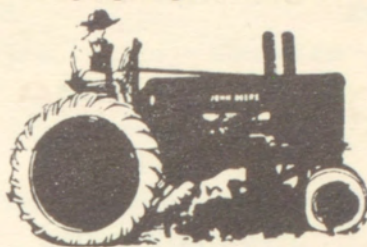
Good Health and Success to All Graduates

WAHL HOTEL

LOUISIANA

MISSOURI

Farm Supply Company



Firestone Tires - Porter Paints - Agrico Fertilizer

John Deere Sales and Service

We Service All Makes of Machinery

Third and Alabama

Phone 1055

Louisiana,

Missouri

Louisiana Lumber Company

Dealer In

Lumber and All Building Material

Reasonable

Reliable

Responsible

4th South Tennessee Street

Louisiana,

Phone 174

Missouri

Bon Voyage

Your Home Town Newspaper

The Louisiana Press Journal

Joins This Community In Wishing You The Best
Of Everything In Your Journey Through Life

May We Have The Privilege Of Continuing To Keep
Your Friends Informed Of Any Newsworthy Event
That Comes Your Way In The Years Ahead

Dillender Grocery

Quality Groceries

Service Satisfaction

A Clean Store

A Clean Stock

Prompt Service

A Square Deal

Phone 98 - 99

Louisiana,

Missouri

New Home

Jenkins Sewing Center

Repair Parts and Servicing

419 Georgia

Louisiana,

Phone 333

Missouri

Duncan & Jordan Grocery

Monarch Finer Foods

Phone 43 For Courteous Delivery

Louisiana,

Missouri

M. F. A. Central Co-op.

Gas - Oils - Greases

Meats - Groceries

All Farm Products and Supplies

Louisiana,

Phone 274

Missouri

KIENTZLES SHOE STORE

Shoes - Hosiery - Bags - Costume Jewelry

Louisiana,

Missouri

GREEN'S BOOK STORE

School Supplies and Books

Louisiana,

Missouri

From A

FRIEND

Clark Theatre

NORD-BUFFUM PEARL BUTTON COMPANY

MANUFACTURERS OF

FRESH WATER



PEARL BUTTONS

SALES OFFICES

BIRMINGHAM, ALA.
DALLAS, TEXAS
LOS ANGELES, CALIF.
SEATTLE, WASH.
ST. LOUIS, MO.

LOUISIANA, MISSOURI

SALES OFFICES

BALTIMORE, MD.
CLEVELAND, OHIO
NEW YORK, N. Y.
PHILADELPHIA, PA.
TAMPA, FLA.

MUTT and JEFF

Frigidaire Appliances

Good Year Tires

Sales and Service

Louisiana Floral Co.

LESLIE A. WILLIAMS

Fresh Cut Flowers, Funeral Designs and Plants

BROWN'S PHARMACY

Prescriptions

418 Georgia Street

Lousiana,

Missouri

In Louisiana, Missouri

It Is

KROGERS

O'DONNELL'S PHARMACY

Fountain Service - Drugs

YOUNGS VARIETY STORE

Wall Paper and Paints

Louisiana,

Missouri

HOLDRIDGE JEWELRY

Watches

Jewelry

Diamonds

Phone 199

Louisiana,

Missouri



S. E. JEFFRIES
Freezers — Refrigerators
Sales and Service



Highway 54

Louisiana, Mo.

Phone 62

NUNNS' PLUMBING

115 South 3rd

SALES — INSTALLATION — SERVICE

American Standard Fixtures

Youngstown Kitchens

Phone Bowling Green 31 — Louisiana 210



CLARKSON FOOD CENTER

309 Frankford Road
LOUISIANA, MO.

The Way You Want to Look
The Price You Want to Pay

All Yours at

SIZEMORE'S

STYLES OF QUALITY AND FASHION

Come in and See

"The Most Beautiful Thing On Wheels"

WES OLSON PONTIAC

218 So. Main St.

Louisiana, Mo.

Compliments of

LOUISIANA SWEET SHOP

SEAL TEST ICE CREAM

Home Made Candy



PASTEURIZED DAIRY PRODUCTS

ICE CREAM

Phone 29

Louisiana, Mo.

GLENN VALLENTINE, INCORPORATED



We Service All Makes Of Cars



Dodge Passengers Cars

Plymouth Passengers Cars

Dodge Job Rated Trucks

410 - 12 Georgia Street

Louisiana,

Telephone 880

Missouri

"Fine Photographs For Every Purpose"

SLATER STUDIO

10% Discount To L.H.S. Students

Let Us Develop and Print Your Roll Film.

313 1/2 Georgia

Phone 239

ABEL BROTHERS STATION

Daylite To Midnite

Road Service



500 Georgia

Phone 986

Louisiana, Missouri

Compliments Of

LOUISIANA FURNITURE COMPANY

Home Of Good Furniture

Phone 57

SCHAPER CHEVROLET COMPANY

Kermit Schaper, Proprietor

Chevrolet Sales and Service

Phone 205

Louisiana,

Missouri

Visit Our Record Department

You Will Find a Large Selection of Popular, Classic, and Children's

By — Decca — Victor — Columbia — Capital — Mercury

Repair Service On All Makes Radio and Phonograph Combinations

RCA Victor and Magnavox Radios

78, 45, 33 1/3 R.P.M. Records

HARRY L. AND GERALD T. KRITZ

Phone 681

SHIELDS-TROWER MOTOR COMPANY

Studebaker Sales and Service

Skelly Petroleum Products

Twenty-Four Hour One-Stop Service

Phone 455

BARKER SERVICE STATION

"Doc" Barker, Owner

Tire Repairing - Expert Greasing

Service Day and Night

Corner 3rd and Mansion

Louisiana,

Phone 31

Missouri

Compliments Of
WORTHWHILE BAKERY

George A. Spanos, Manager

Phone 768

Louisiana,

Missouri

CAMPBELL CLEANERS



If It's Clean It's Odorless

Louisiana,

Missouri

BOB PRICE

Phillips "66" Service

Washing - Greasing - Polishing

Tire Repairing - Trailer Parking

Auto Accessories

Compliments Of

ISOM'S PASTRY SHOP

LOUISIANA PHARMACY

Drug - Prescriptions - Sundries

Phone 15

323 Georgia Street

ROSE SHEET METAL COMPANY

Lennox Warm Air Furnaces - Westinghouse Appliances

Cooking

"Ruralgas"

Hot Water and

Refrigeration

Space Heating

For Homes Beyond The Gas Mains

Louisiana,

Missouri

LOUISIANA MAYTAG STORE

Washers

Maytag

Ranges

Ironers

Freezers

Crosley Refrigerators

**SCHWARTZ BASKET AND
BOX COMPANY**

Louisiana, Missouri

Baskets for Pike County Apples

Jobs for Pike County People

JOHN M. WORD AND SON, Agents

REAL ESTATE - LOANS - INSURANCE

BANK OF LOUISIANA BLDG.

OFF. 195 - RES. 178 OR 804 J

LOUISIANA, MISSOURI

Compliments Of

Ray Behrens

Authorized

Ford

Sales and Service

Louisiana,

Missouri

Lots of Good Luck

to You All

WESTERN AUTO ASSOCIATE STORE

BILL ROTTMAN, Prop.

POLLARD'S CAFE

At the Bridge

Wm. B. & W. P. Haley

Mercantile Bank Building

Louisiana, Mo.

ALL FORMS OF INSURANCE

Walker's 5c to \$1.00 Store

"A Friendly Store in a Friendly Town"

Phone 467

J. C. TALIAFERRO

PHONE 46

ESTABLISHED 1894

Arcade Clothing Store

MEN'S AND BOYS' CLOTHING, FURNISHINGS AND SHOES

317 GEORGIA STREET

LOUISIANA, MISSOURI

Best Wishes To The Graduating

Class Of The

Louisiana High School

From

AB'S CAFE

Louisiana,

Missouri

S. A. GOODIN and SON

BARBER SHOP

Louisiana,

Missouri

Frozen Gold

Cream of Creams

Ice Cream

FROZEN GOLD
ICE CREAM COMPANY

STROTHERS JEWELRY STORE

Diamonds, Watches

Clocks, Silverware

Jewelry

411 Georgia Street

Compliments

Of

NICKLES PHARMACY

LOGAN'S FINE FOODS

C. C. Coddington, Proprietor

Compliments Of

MODEL CLEANERS

Phone 718

"WHEN IT'S FLOWERS SAY IT WITH OURS"

ESTERBROOK FLORIST

1202 SO. CAROLINA, - LOUISIANA, MO.

CORSAGES
FUNERAL DESIGNS - WEDDINGS
TABLE DECORATIONS

PHONE 1090-W

WE DELIVER

From A

FRIEND

TELEPHONE 347

ENGLAND BROS.

ATLAS TIRES AND
BATTERIES

201 SOUTH 3RD STREET
LOUISIANA, Mo.

D. O. WEAVER INSURANCE

BANK OF LOUISIANA BLDG.

LOUISIANA, MISSOURI

GENERAL GAS & ELECTRIC CO.

REFRIGERATORS — RANGES — HEATERS

BOTTLE GAS

Georgia St. Phone 139 Louisiana, Mo.

FRIER HARDWARE CO.

HARDWARE, TOOLS AND CUTLERY

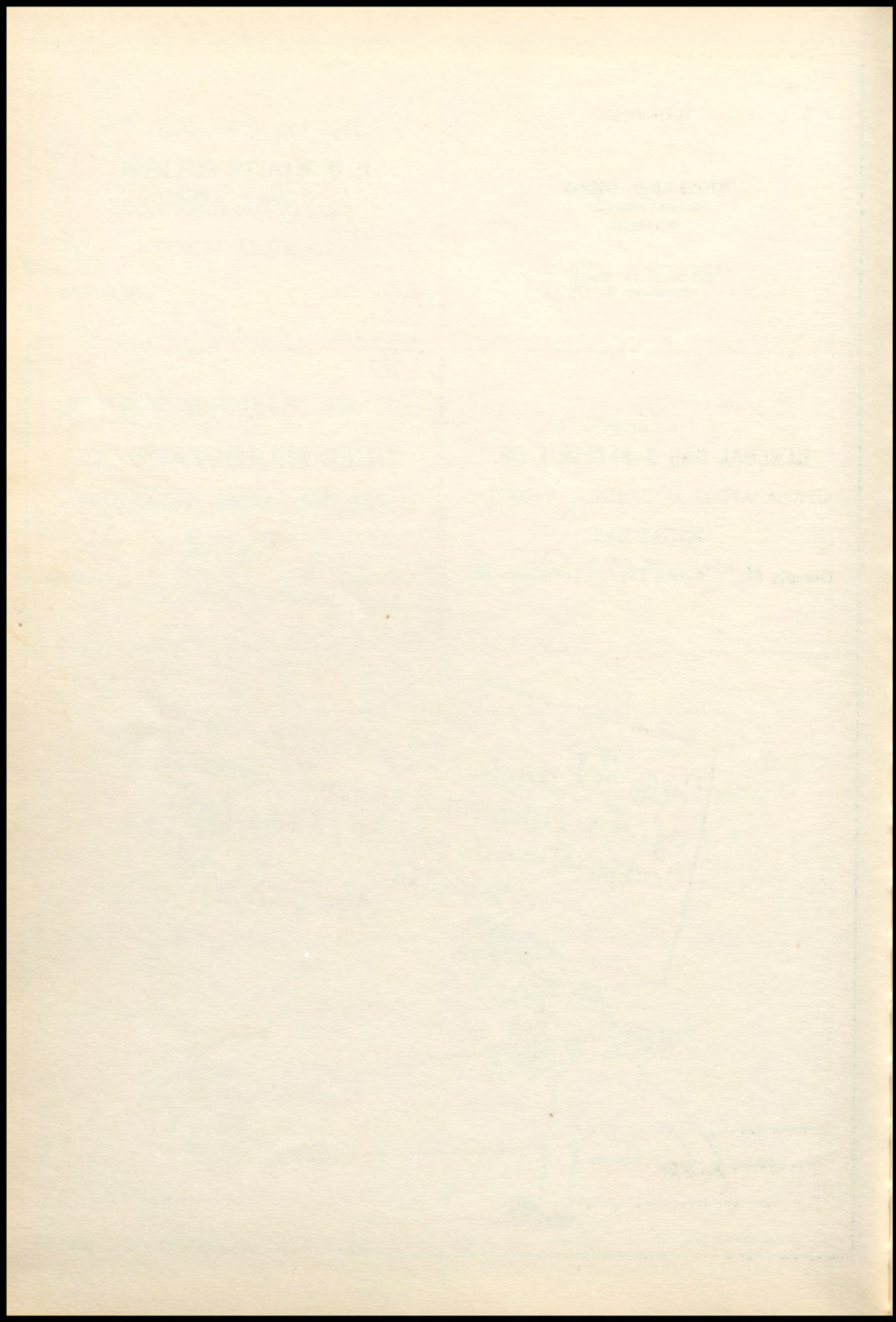
— Tel. No. 25 —

Louisiana

Missouri

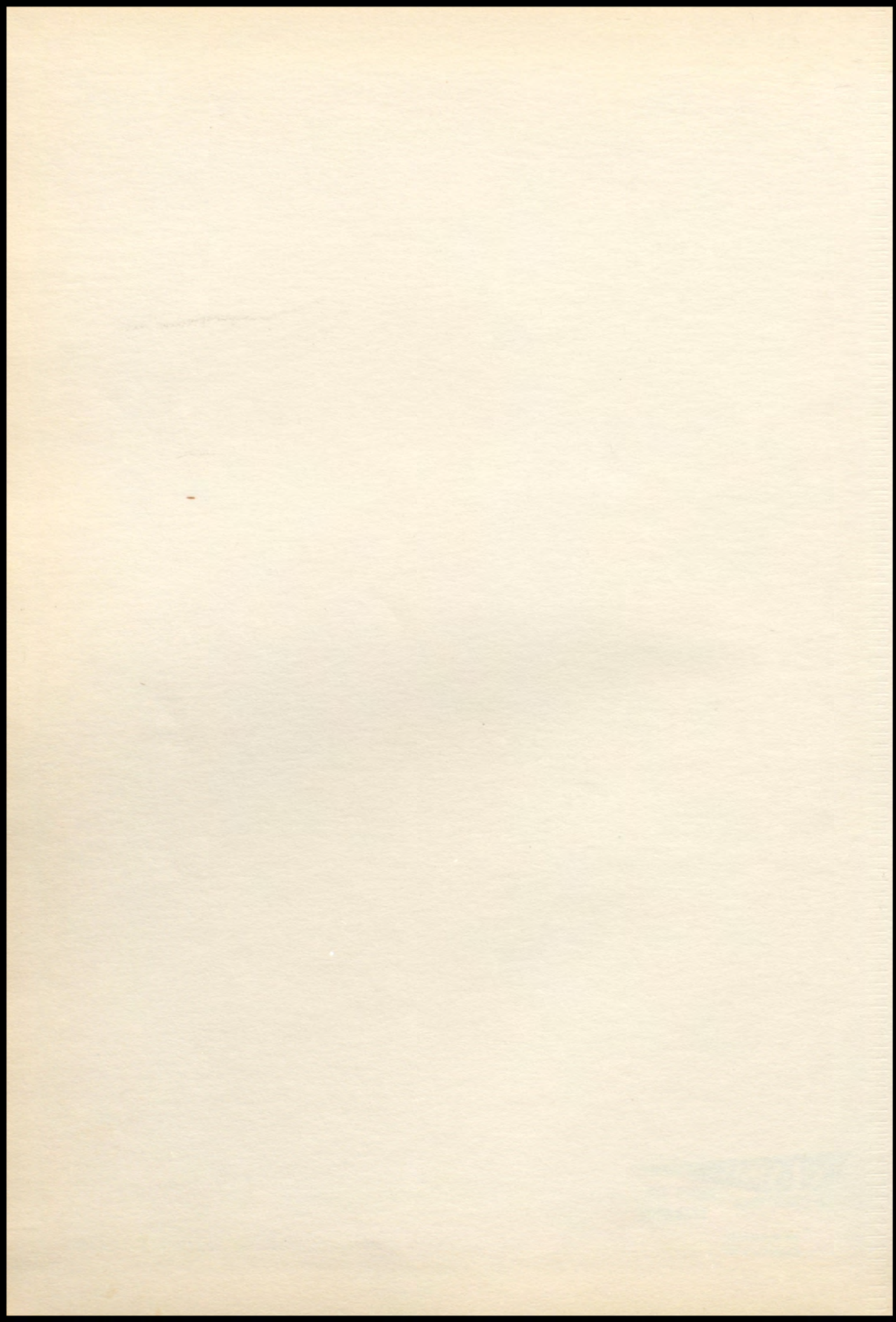


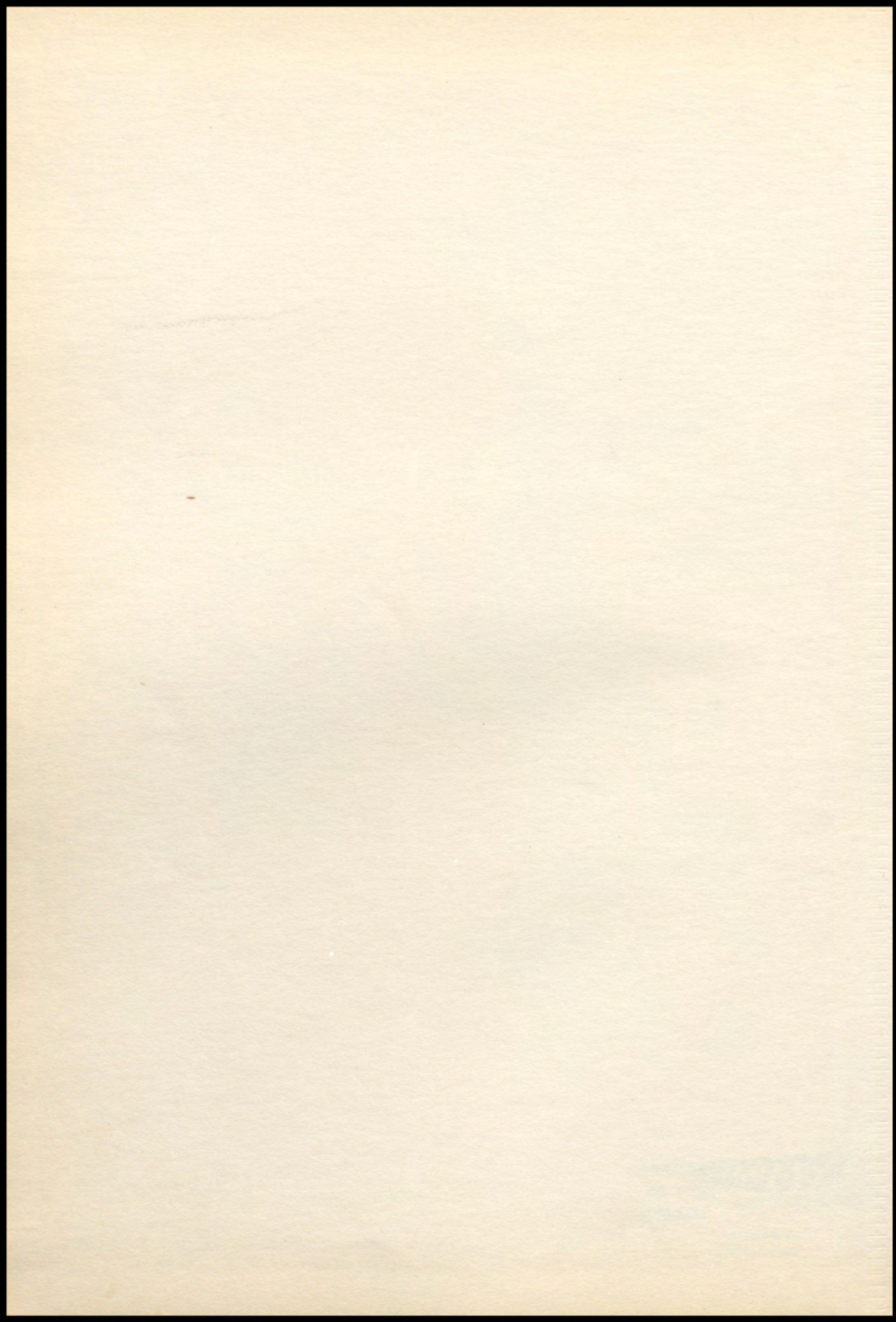
— Birchen —





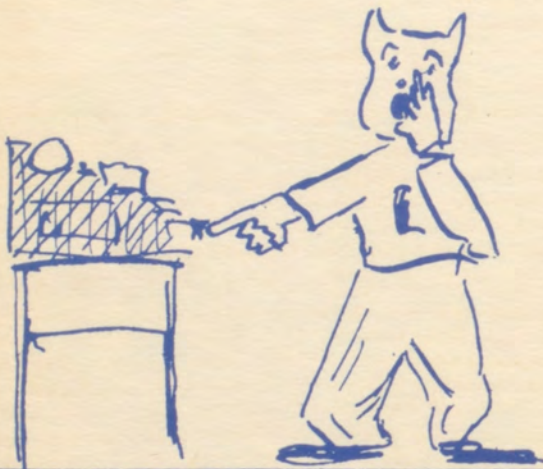
406 West 34th St.
Kansas City 2, Mo.







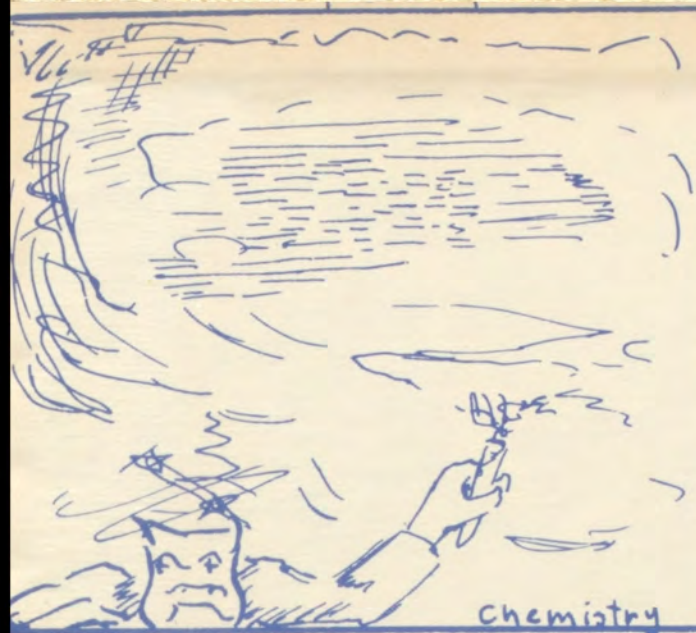
It bit me !!! ———



Band ??



ooooooooo

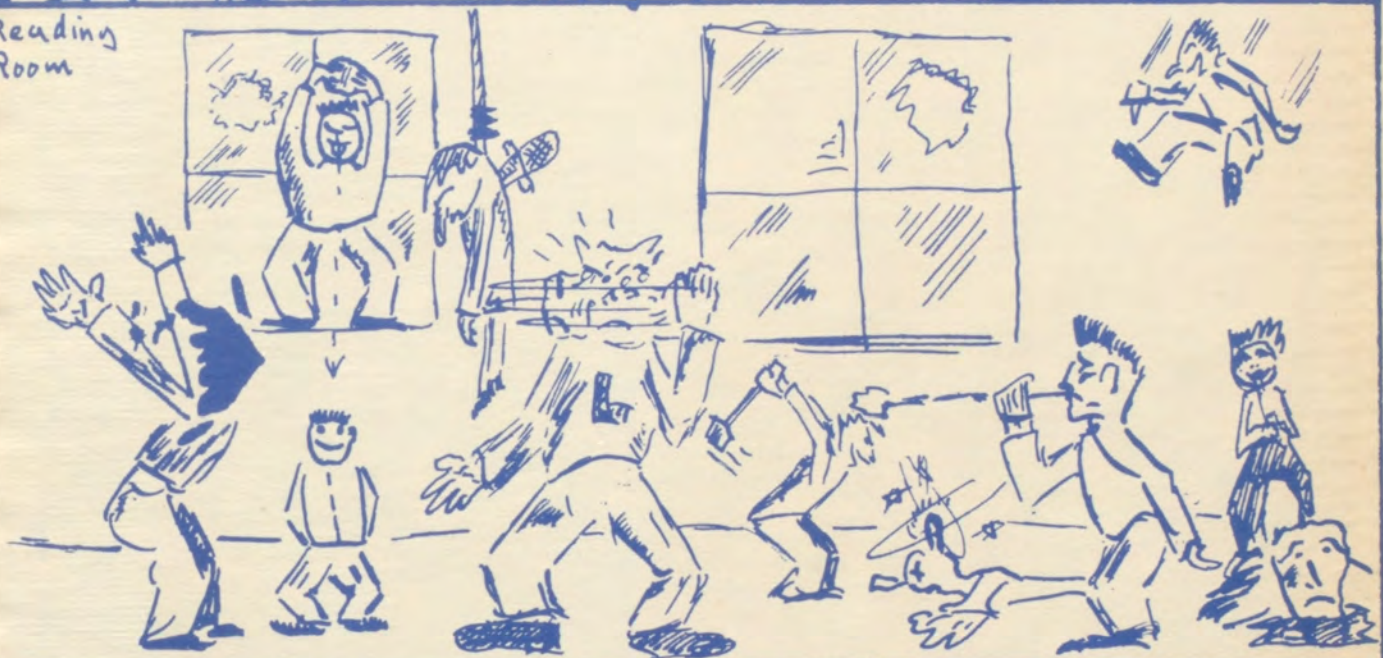


chemistry

to be, or not to be, is that the question ???



Reading Room



Isn't this the lounge?

Why? I always put MARBLES in MARBLE CAKE!!!



