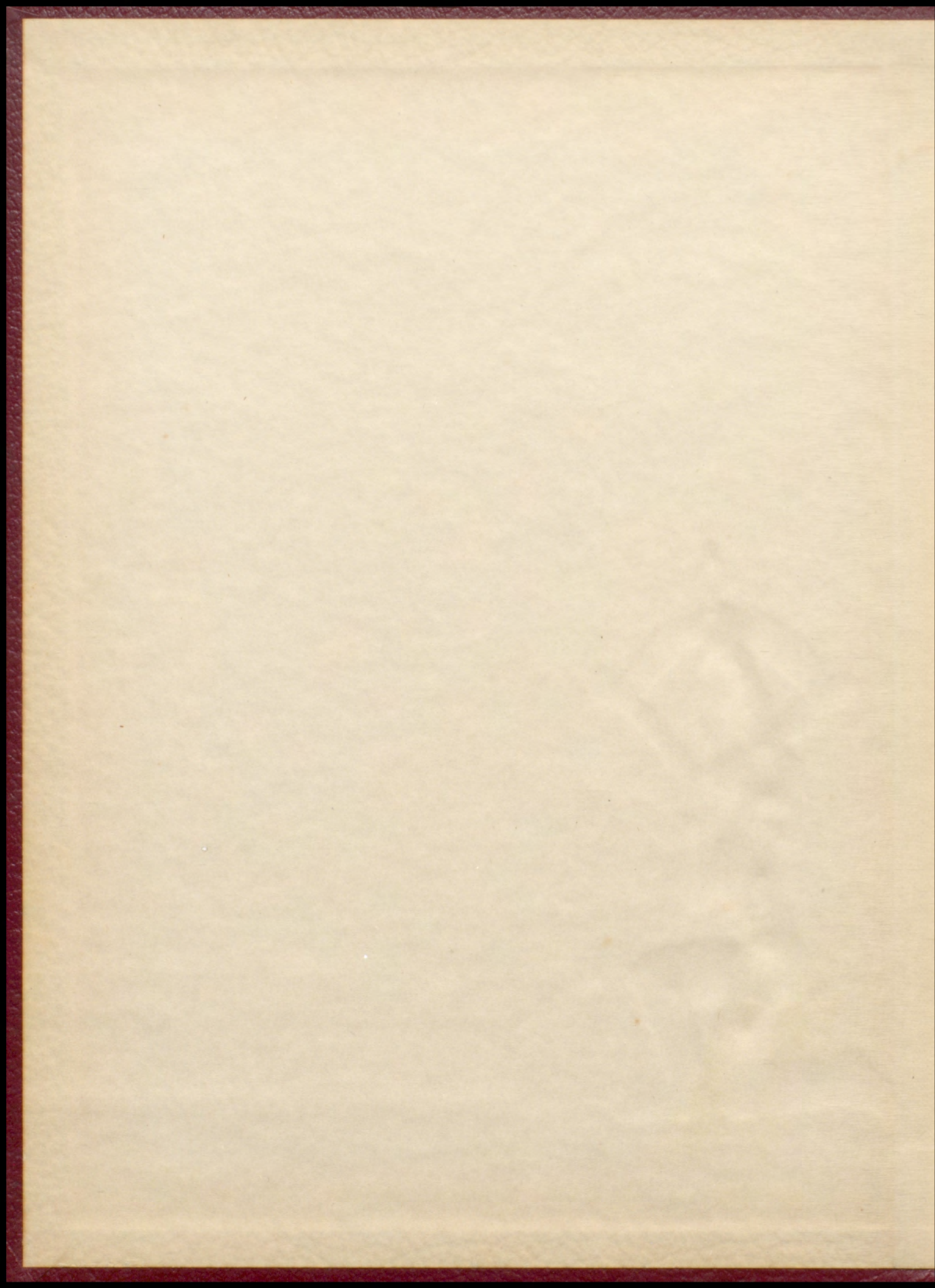
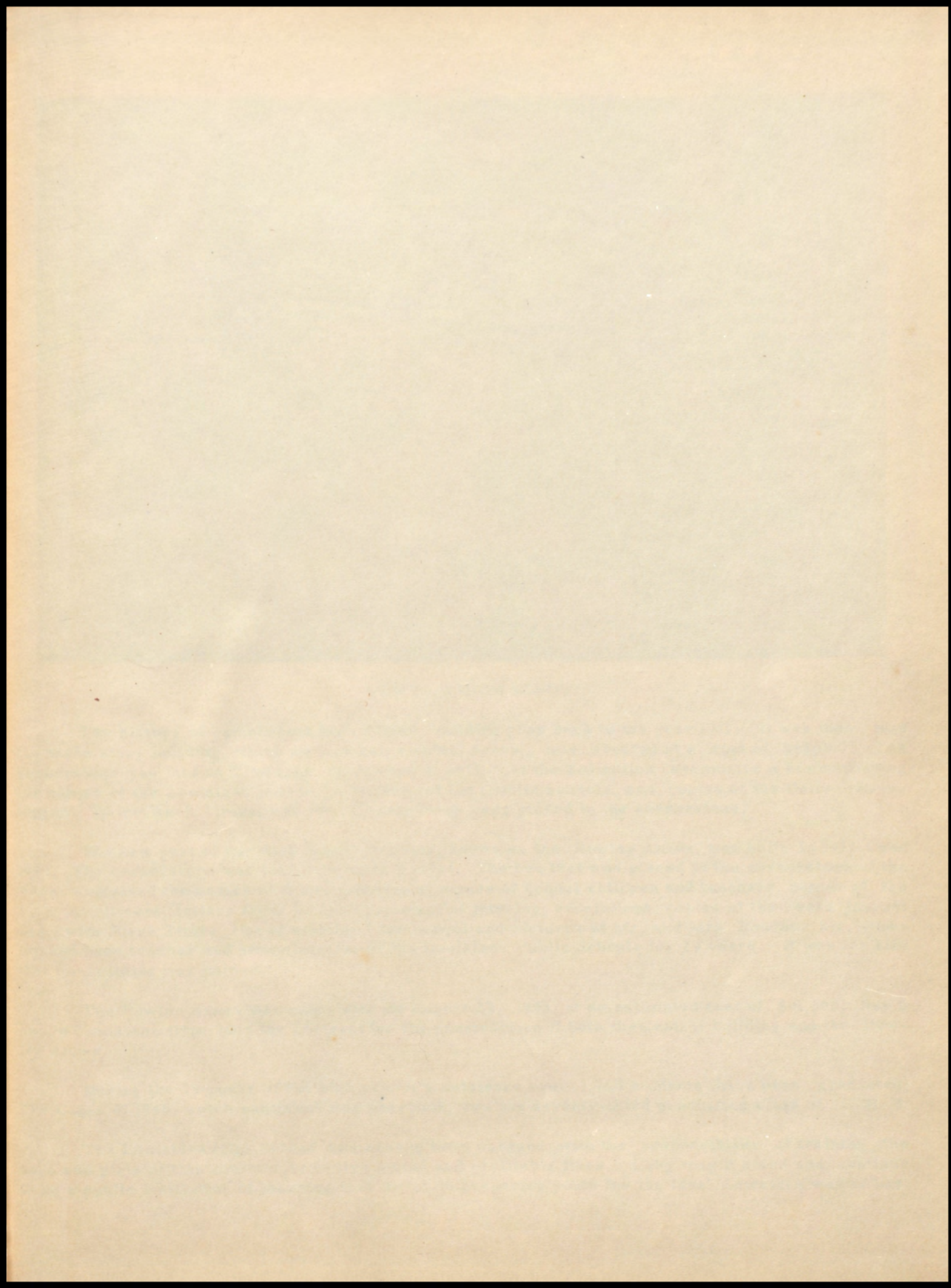


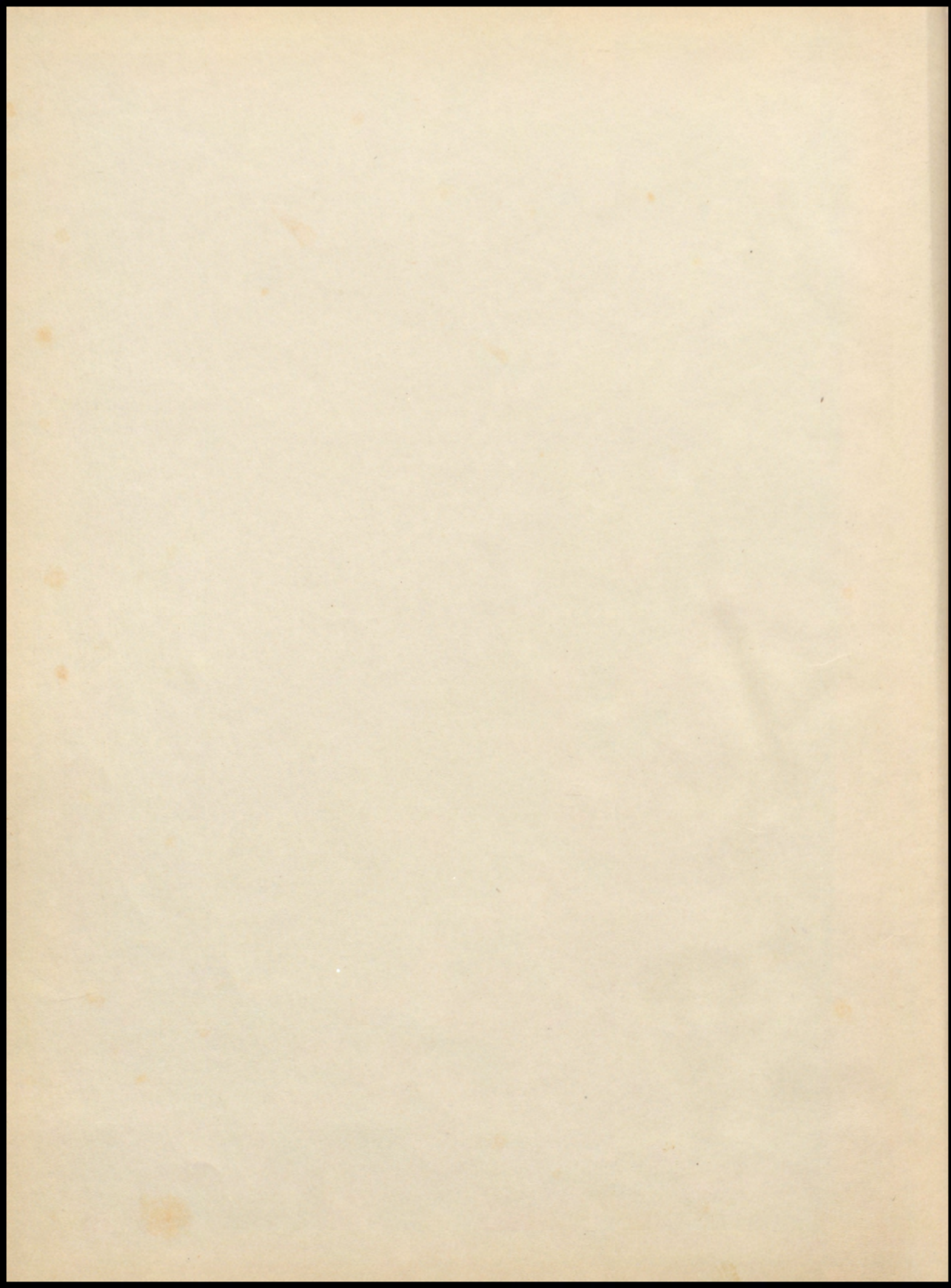
1948



A L A M O









OUR OLD HIGH SCHOOL

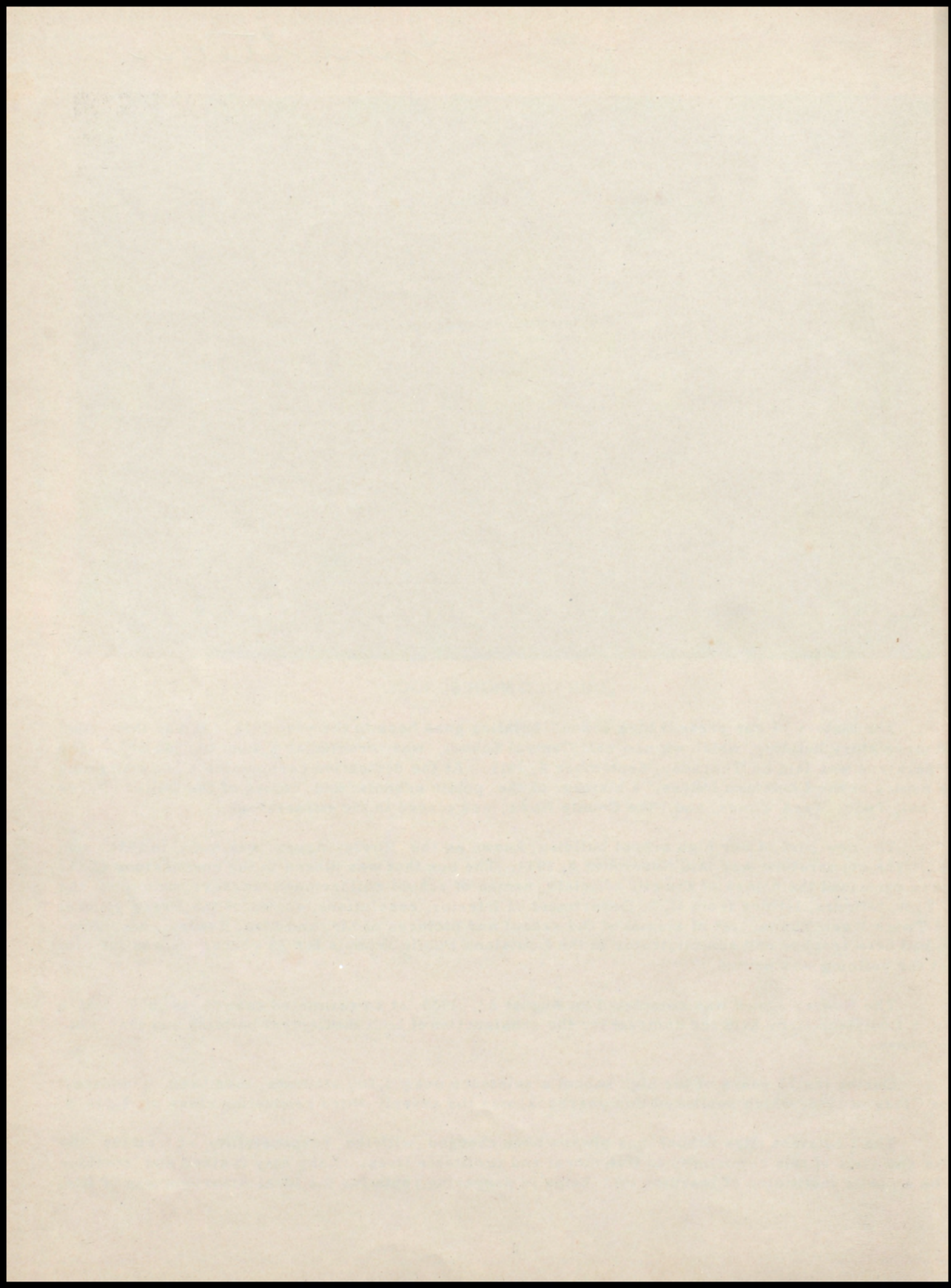
The history of our present high school building goes back to the year 1913. It was then that the three story building, which we now call Central School, was erected at a cost of \$42,000. The cornerstone was laid on Thursday, September 4, 1913. At the dedication ceremonies a box containing the names of the Louisiana lodges, a history of the public schools, and copies of the Daily Press Journal, Twice Week Times, and Pike County News, was placed in the cornerstone.

The new part of our high school building, known as the Rowley Annex, was built in 1934 and 1935. The cornerstone was laid November 8, 1934. The box that was placed in the cornerstone of the Annex contained the names of the city officials, names of school children and teachers, names of the P. T. A. officers, letters from U. S. Department of Interior, resolutions, copies of the Press Journal and Twice Week Times, list of alumni of the school and pictures of Mr. and Mrs. Rowley. Mr. Rowley had been teacher and administrator in the Louisiana Public Schools for 39 years. It was for him that the building was named.

The Rowley Annex was completed on August 23, 1935 at an estimated cost of \$91,000. Ray & Son, a Louisiana firm, held the contract for the construction of both the Central building and the Rowley Annex.

During the 73 years of the high school's existence over 1,700 students have been graduated. The Class of 1948, which published this yearbook, was the seventy-third graduating class of L. H. S.

The Louisiana High School has always been charged with the responsibility of training the boys and girls of this community to live moral and profitable lives. Long may it stand and continue to be a public institution of learning that helps in preparing youth for the ideal American way of life.



THE 1948

A L A M O

**LOUISIANA HIGH
LOUISIANA, MO.**



DEDICATION

IN MEMORIAM

To the memory of Grace M. Berry, for thirty-one years a faithful teacher in the Louisiana High School, this book is respectfully and gratefully dedicated. She was born June 16, 1891 and died June 16, 1947.

The many acts of kindnesses that were rendered and her many hours of unselfish toil that she gave for the students of this, her beloved, high school were manifestations of her superior and sympathetic character. Our love for her will be a lasting tribute to her memory.



Seated--Russell Armentrout, Eric A. Cunningham, P. L. Marsh.
Standing--Marion Parker, Charles Nord, W. P. Haley.

SCHOOL BOARD

President Eric A. Cunningham
 Vice-President P. L. Marsh
 Secretary Russell Armentrout
 Treasurer W. P. Haley

Charles Nord Marion Parker

FOREWORD

Through the cooperation of students, faculty, organizations, and business firms, the Alamo Staff once more brings the annual yearbook to the students of L. H. S. and the people of Louisiana.

It is our fervent hope that we have accurately recorded in lasting form the aims, activities, and achievements of the past year. A record such as this, we believe, will catch and hold the memories of your high school days in such a crystallized state that they can never be forgotten. Certainly school memories should be a lasting joy throughout life. With this book may your hours of reminiscing in the years to come be accentuated with smiles of happiness.

TABLE OF CONTENTS

FACULTY	Page	6
SENIORS	Page	10
UNDERGRADS	Page	22
ACTIVITIES	Page	28
ATHLETICS	Page	54
ADVERTISING	Page	64



FACULTY
MEETING
DO NOT DISTURB

FACULTY



Supt. Maynard M. Pettigrew



Principal Galen E. Lankford
Mathematics



Miss Lois Hastings
Commerce



Mrs. H. R. Burns, Jr.
Music



Mr. Eugene B. Grant
Science, Coach



Mrs. Claude Smallwood
Home Economics

Miss Mae Hofriechter
Social Science, English
Physical Education



Mrs. T. J. Forgy
Speech, English



Mrs. Lucy English
Latin, Literature



Mr. William Ellis
Vocational Agriculture



Mrs. M. M. Pettigrew
History



Alice Blackmore Love
Secretary to Superintendent

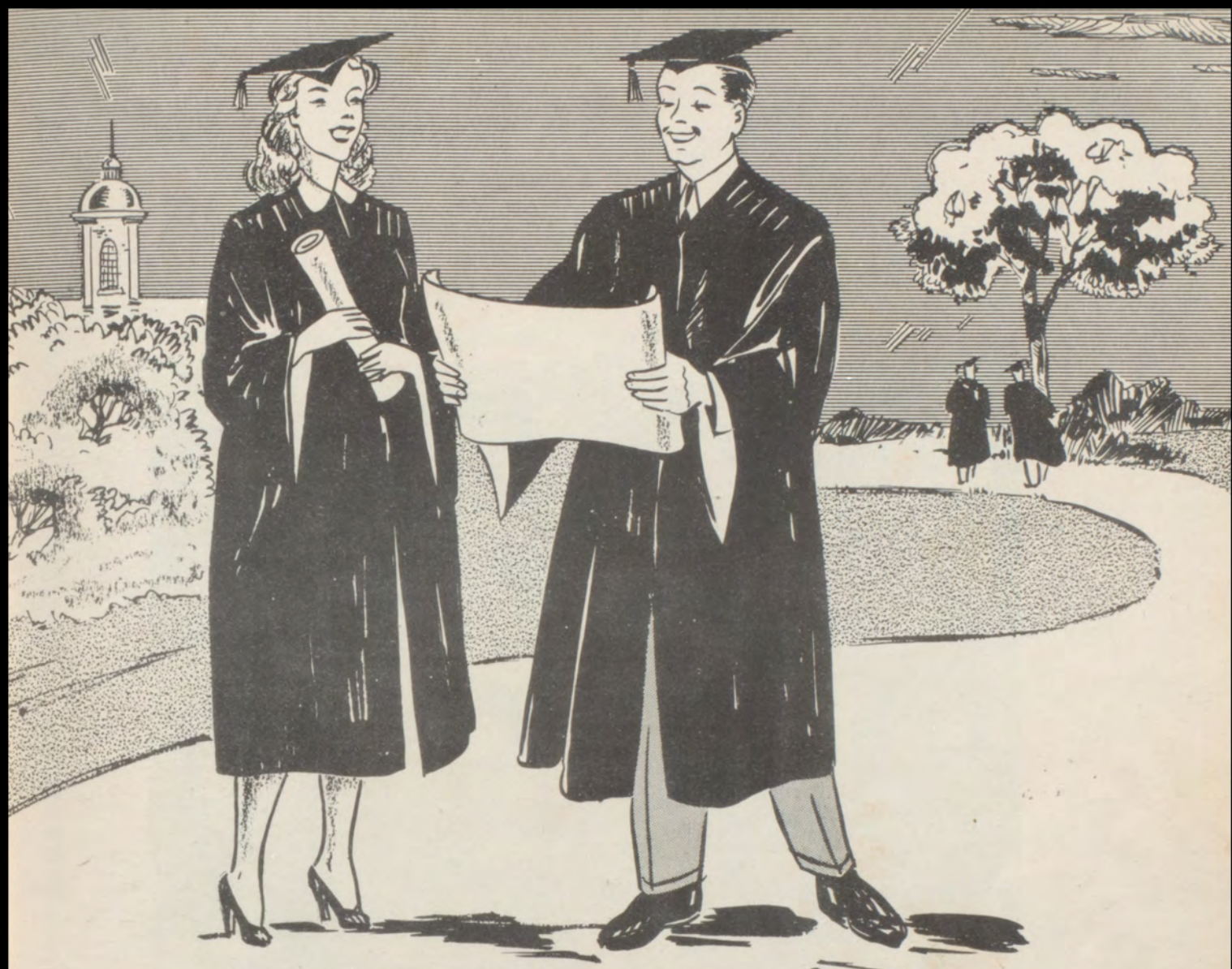




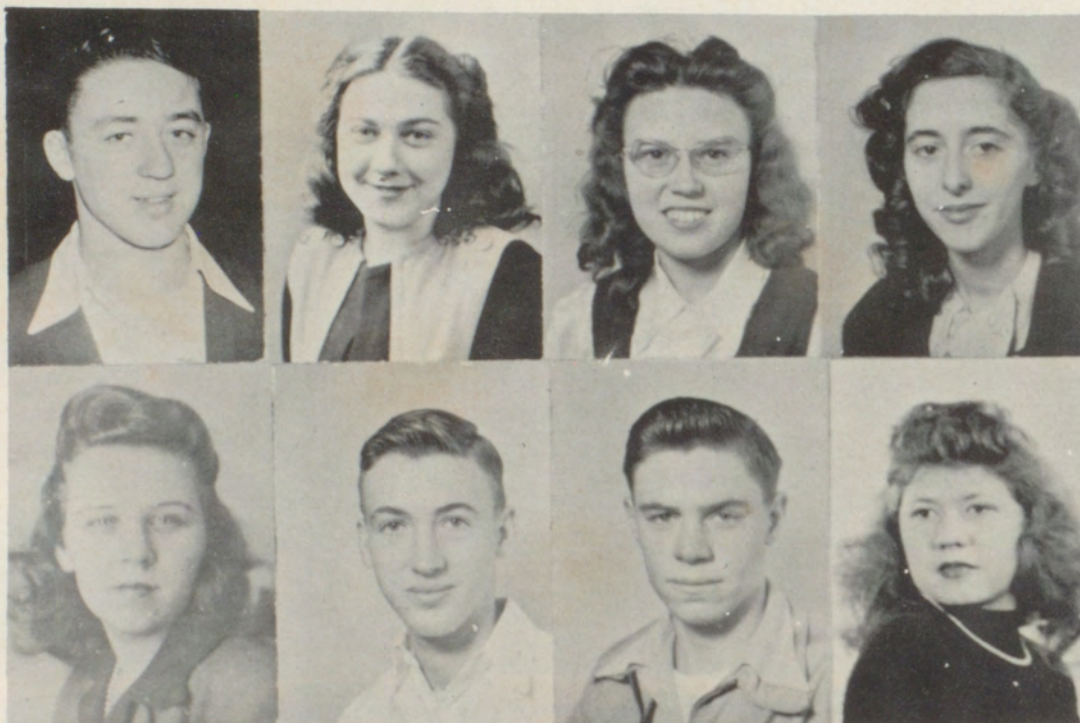
Back Row, left to right: Principal Galen E. Lankford, Frank Henderson, Roger Jones, Lewis Todd, Conne Sandven, Forest Turner, Bob Burbridge, Charles Nord.
Front Row, left to right: Virginia Bolomey, Bonnie Evick, Imogene Griffith, Sue Gibson, Eulalie Haley, Carol Armentrout, Paula Bunn, Doris Wahl.

ALAMO STAFF

Galen E. Lankford	-----	Sponsor
Conne Sandven	-----	Editor
Roger Jones	-----	Assistant Editor
Lewis Todd	-----	Business Manager
Paula Bunn	-----	Assistant Business Manager
Virginia Bolomey	-----	Senior Editor
Carol Armentrout	-----	Junior Editor
Eulalie Haley	-----	Sophomore Editor
Frank Henderson	-----	Freshman Editor
Imogene Griffith	-----	Music Editor
Sue Gibson	-----	Art Editor
Charles Nord	-----	Athletic Editor
Doris Wahl	-----	Activity Editor
Bob Burbridge	-----	Agriculture Editor
Forest Turner	-----	Treasurer
Bonnie Evick	-----	Secretary



SENIORS



ADKISON, BILL
 Glee Club
 "L" Club
 Basketball
 Football
 Track
 Operetta
 Senior Play

ADKISON, ROXANNA
 Glee Club

BAKER, LENORA E.
 Glee Club

BOLOMEY, VIRGINIA
 Highlights Staff
 Junior Play
 Band
 Glee Club
 Alamo Staff
 Operetta

BOWLES, JOAN
 Sophomore Pilgrimage (Clarksville)
 Glee Club
 Operetta
 Office Assistant

BRAY, JOHN
 Glee Club
 Band
 Football
 Basketball

BURBRIDGE, BOB
 "L" Club
 Football
 Alamo Staff
 Highlights Staff
 Operetta
 Agriculture Award

BURBRIDGE, DORIS
 Drum & Bugle Corps
 Highlights Staff
 Glee Club
 Operetta

CHAPUIS, DOROTHY
 Band
 Twirler
 Glee Club
 Operetta
 Alamo Queen

CULWELL, WENDELL
 F. F. A.
 "L" Club
 Glee Club
 Football
 Softball
 Livestock Judging

DEAN, DAVE
 Highlights Staff
 Junior Play
 Glee Club
 Operetta
 Freshman President
 (Ritenour)

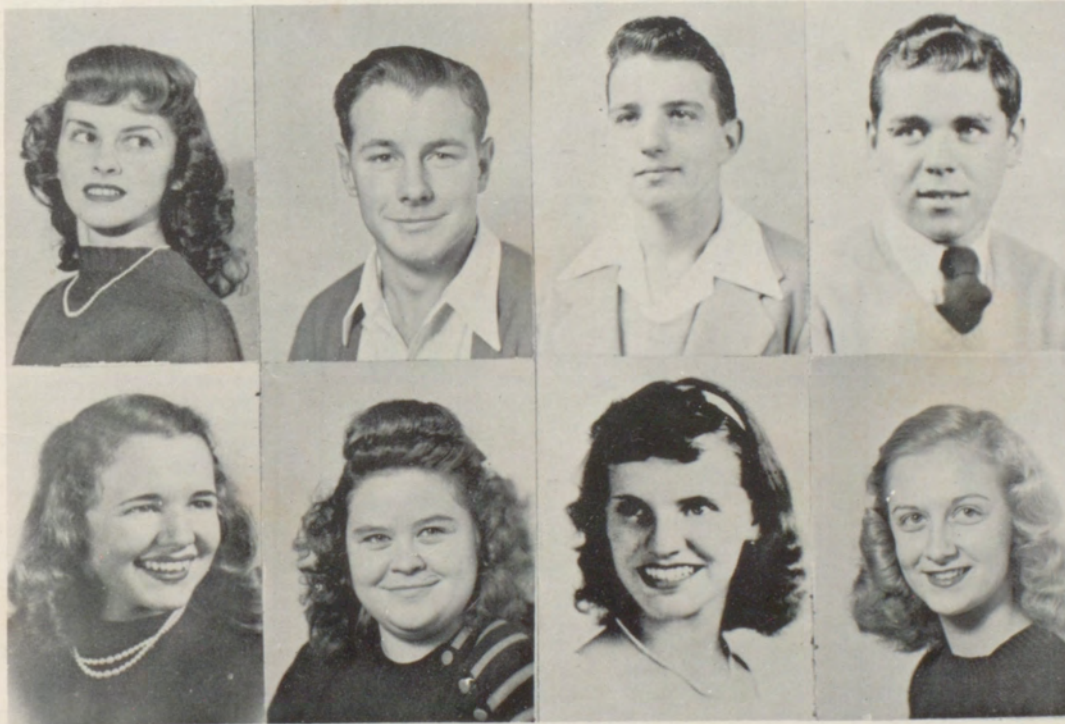
DUDLEY, GORDON
 "L" Club
 Track
 Football

EVICK, BONNIE
 Junior Play
 Twirler
 Alamo Staff
 Highlights Staff
 Operetta
 Glee Club
 Drum & Bugle Corps
 Senior Play

FERGUSON, DOROTHY
 Student Council
 (Clarksville)
 Operetta
 Glee Club

GIBSON, SUE
 Highlights Staff
 Alamo Staff
 Band
 Glee Club
 Office Assistant
 Junior Play
 Sophomore Sec.-Treas.
 Drum & Bugle Corps
 Senior Play

GRIFFITH, IMOGENE
 Band Majorette
 Student Body Sec.-Treas.
 Junior Play
 F. F. A. Attendant
 Student Council
 Alamo Staff
 Glee Club
 Office Assistant
 Highlights Staff
 Operetta
 Senior Play
 Drum & Bugle Corps





GUENGRICH, MARIANNE
 Senior Vice-President
 Band
 Glee Club
 Highlights Staff
 Junior Play
 Senior Play
 Who's Who

HALLOWS, MARIAN
 Office Assistant
 Drum & Bugle Corps
 Glee Club

HAMLETT, R. D.
 "L" Club
 Football
 Glee Club
 Highlights Staff

HIRSCH, SHIRLEY
 Cheerleader
 Twirler
 Glee Club
 Highlights Staff
 Drum & Bugle Corps
 Operetta
 Senior Play

INCE, JACK
 "L" Club
 Track
 Football
 Glee Club
 Senior Play

KUNA, DOROTHY
 Glee Club
 Office Assistant
 Drum & Bugle Corps
 F. F. A. Attendant
 Football Attendant
 Highlights Staff

MC LEON, CHARLES
 Glee Club

MARTIN, ARLETA
 Glee Club
 Office Assistant
 Operetta

MUFF, PAULINE
 Junior Play
 Band
 Glee Club
 Drum & Bugle Corps
 Operetta

NORD, CHARLES
 Band
 "L" Club
 Football
 Track
 Basketball
 Sophomore President
 Senior Sec.-Treas.
 Alamo King
 Senior Play
 Who's Who

PEDERSON, PEGGY JANE
 Glee Club

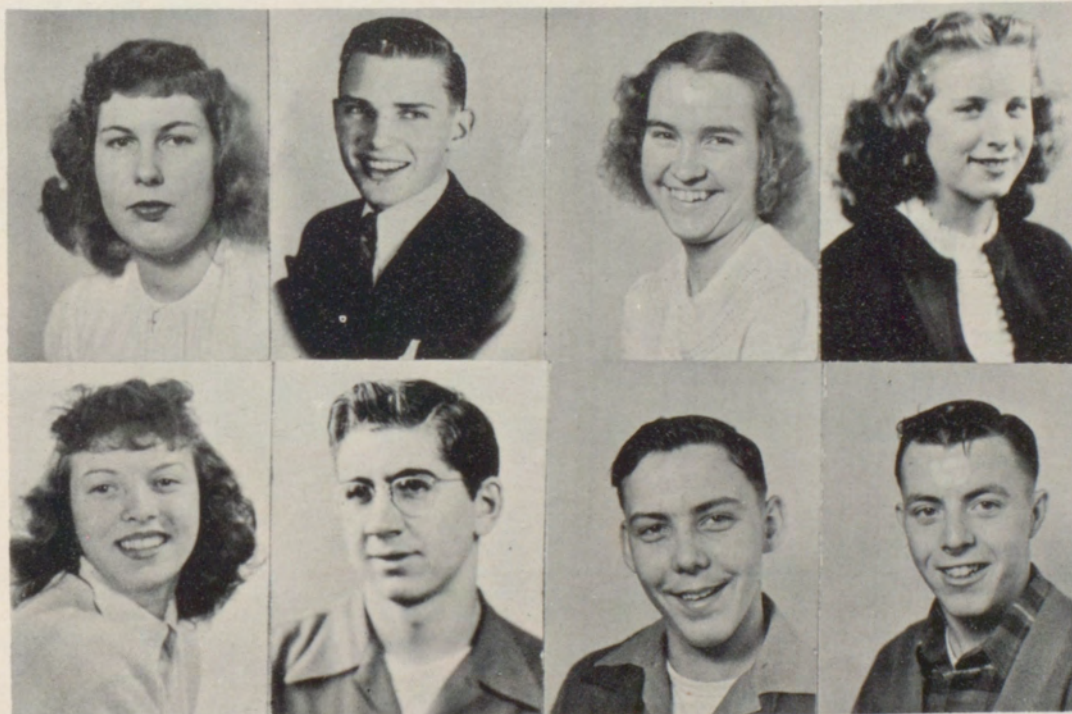
PENROD, ETHEL
 Glee Club
 Band
 Operetta

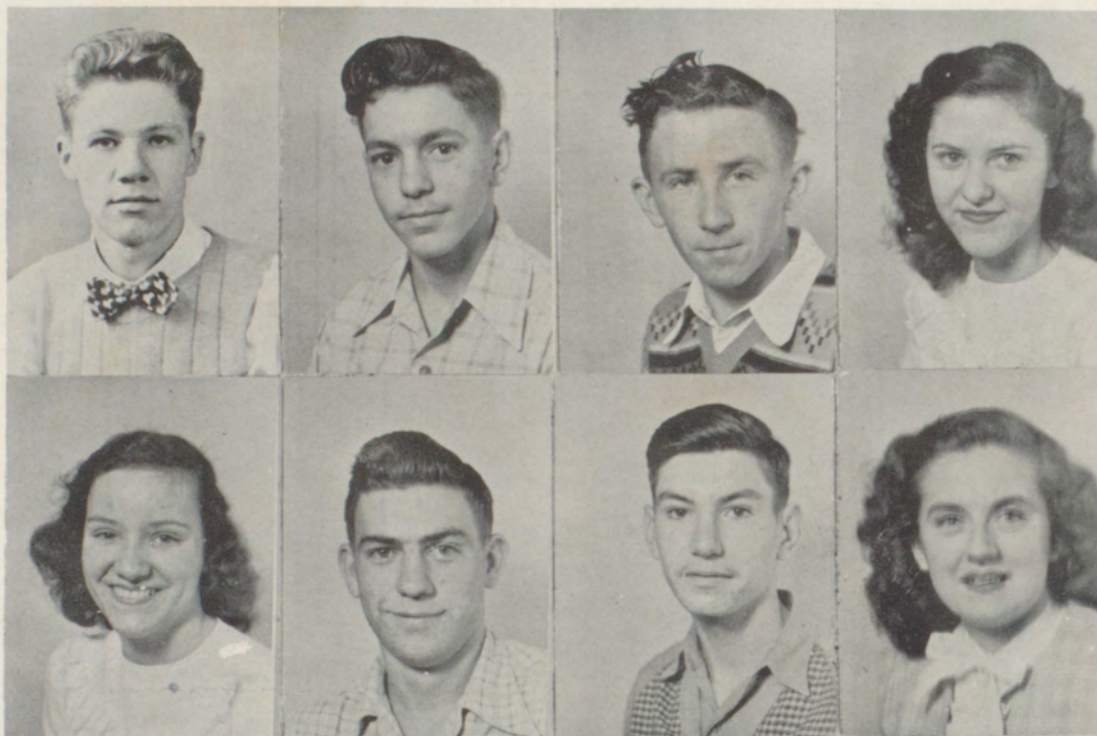
REED, FLORENCE
 Band
 Football Attendant
 Glee Club
 Operetta
 Senior Play

REED, JACK
 "L" Club
 Track
 Junior Play
 Glee Club
 Operetta
 Speech Contest
 Senior Play

RICHARDS, BILL
 Secretary-F. F. A.
 Glee Club
 Junior Play
 Operetta
 Homecoming Escort

ROBINSON, DANNEY
 Football
 Softball
 Basketball
 Track
 "L" Club
 Glee Club
 Freshman, Vice-Pres.
 Sophomore, Vice-Pres.
 Junior, Vice-Pres.





SANDVEN, CONNE
 Alamo Staff
 Sophomore Pilgrimage
 Student Council
 Junior Play
 Operetta
 Band
 Senior Play
 Who's Who

SHIVE, BILL
 Track
 Football
 Basketball

SIDWELL, GEORGE
 Glee Club
 F. F. A. Treasurer
 Operetta

STOUT, MARILYN SUE
 Glee Club
 Senior Play

STOUT, MARY LOU
 Glee Club
 Senior Play

TODD, LEWIS
 Student Body President
 F. F. A. President
 Junior President
 Alamo Staff

TURNER, FOREST
 Glee Club
 Homecoming Escort
 Alamo Staff
 Basketball

VERDIER, JEANIE
 Band
 Highlights Staff
 Glee Club
 Drum & Bugle Corps

WAHL, DORIS
Senior President
D. A. R. Good Citizenship
Student Council
Alamo Staff
Operetta
Junior Play
Glee Club
Drum & Bugle Corps
Office Assistant
Highlights Staff
Senior Play

WALKER, CATHERINE
Office Assistant
Glee Club

WIDAMAN, DOROTHY
Glee Club
Band



SENIOR CLASS

The senior class of 1947-48, with an enrollment of forty-four, was the seventy-third graduating class of L. H. S. Compared with other years, it ranked average in number.

Lewis Todd was elected president of the student body with Imogene Griffith as secretary-treasurer. Senior class officers were Doris Wahl, president; Marianne Guengerich, vice-president; and Charles Nord, secretary-treasurer.

Doris Wahl received the D. A. R. Citizenship Award and competed in a nation-wide American History contest. The winner received a free trip to Washington, D. C.

Six senior boys played on the basketball teams--Danney Robinson, Charles Nord, Bill Adkison, Conne Sandven, Bill Shive and Forest Turner. Boys who played football during the 1947 season were Charles Nord, Jack Ince, Bill Adkison, R. D. Hamlett, Bob Burbridge, Francis Johnson, Dave Dean, Gordon Dudley, Lewis Todd, and John Lewis Bray. A senior girl, Shirley Hirsch, was head cheerleader during the year.

The senior attendant to the Homecoming Football Queen was Florence Reed with Forest Turner as her escort.

Seniors who included Band as one of their extra-curricular activities this year were Florence Reed, Pauline Muff, Marianne Guengerich, Ethel Mae Penrod, Jean Verdier, Imogene Griffith, Sue Gibson, Dorothy Chapuis, Virginia Bolomey, Charles Nord, Conne Sandven, and Bob Burbridge. Twirlers were Shirley Hirsch, Bonnie Evick, and Dorothy Chapuis. The 1947-48 majorette was Imogene Griffith.

The class was sponsored by Mrs. Lucy English, the new English instructor at L. H. S. Under her guidance all of the class activities proved successful and profitable. The senior party, under the direction of Mrs. English, was unanimously voted the most successful of their high school career.

The 1947-48 Alamo Staff included nine seniors. They were Conne Sandven, editor; Lewis Todd, business manager; Charles Nord, athletic editor; Doris Wahl, activity editor; Virginia Bolomey, senior editor; Forest Turner, treasurer; Sue Gibson, art editor; Imogene Griffith, music editor; and Bonnie Evick, secretary.

The honor of being elected Alamo King and Queen went to Charles Nord and Dorothy Chapuis.

Both boys' and girls' glee clubs were well represented by the seniors. They were instrumental in making numerous activities in the high school and in town organizations successful.

A senior boy, Lewis Todd, was elected president of the F. F. A. Imogene Griffith was attendant to the 1947-48 F. F. A. Barnwarming Queen.

The Senior Play was given May 7th, and was under the direction of Miss May Hofriechter.

On May 14th, the annual Junior-Senior Banquet was held. Baccalaureate services were held Sunday, May 16, with Rev. J. E. Chappell, Pastor of the First Baptist Church, as the guest speaker. Commencement was Friday, May 21. Dr. W. W. Carpenter, Professor of Education, University of Missouri, delivered the commencement address.

On the whole the senior class enjoyed a successful and profitable year. This was due in no small measure to the efforts of teachers and friends, not only in class activities but in extra-curricular work as well.



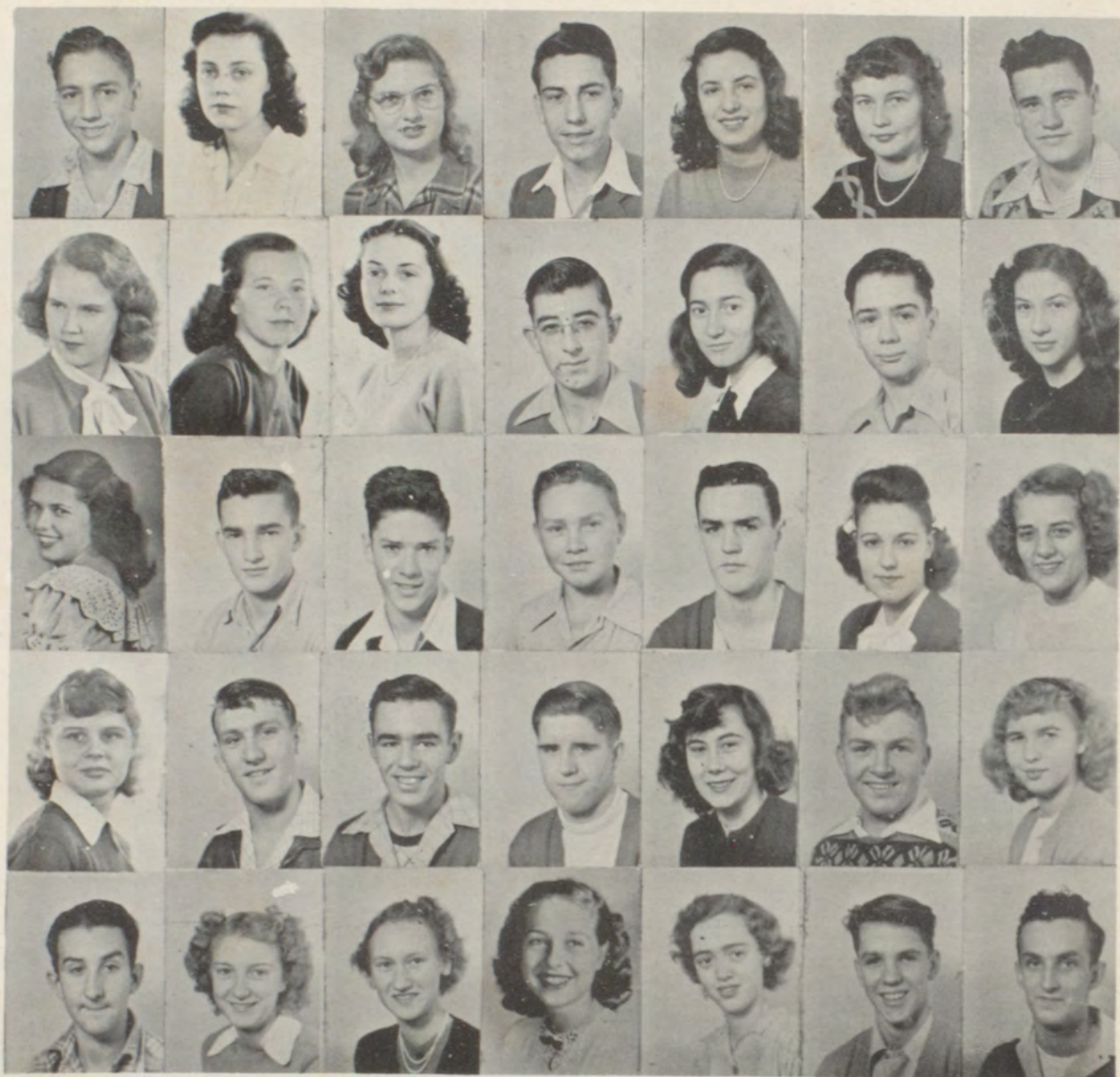
CLASS OF 1948

Front Row, left to right: Lenora Baker, Arleta Martin, Dorothy Widaman, Dorothy Kuma, Sue Gibson, Imogene Griffith, Ethel Mae Penrod, Peggy Pederson, Dorothy Ferguson, Bonnie Evick, Shirley Hirsch, Roxanna Adkison, Pauline Muft, Joan Bowles. Second Row: Bill Adkison, Charles Nord, Jeanne Verdier, Dorothy Chapuis, Florence Reed, Marian Hallow, Marilyn Sue Stout, Mary Lou Stout, Marianne Guen-gerich, Catherine Walker, Doris Wahl, Doris Burbridge, John Lewis Bray, Bob Burbridge, Mrs. Lucy English. Third Row: George Sidwell, Gordon Dudley, Lewis Todd, Bill Richard, Jack Reed, Conne Sandven, Forest Turner, R. D. Hamlett, Charlie McCleod, Dave Dean, Bill Shive, Danney Robbison, Wendell Culwell, Jack Ince.





UNDERGRADS



First Row, left to right: Gene Allison, Carol Armentrout, Mary Ellen Bass, Ralph Bass, Annette Bland, Jane Ann Brown, Joe Henry Bruch. Second Row: Paula Buan, Etta Burns, Charlotte Campbell, Malcolm Carroll, Sylvia Cozad, Edward Creamer, Beverly DeWeese. Third Row: Virginia Dillender, Johnnie Dillender, Bennie Griffith, Frank Hallows, Ralph Hammack, Wanda Henry, Charlotte Hunter. Fourth Row: Sandra Jasper, Francis Johnson, Roger Jones, Billy Jordan, Pauline Kanan, Tommy King, Ruby Loneragan. Fifth Row: George Lucas, Gertrude McCleery, Mary Louise McKinzie, Dorothy Mitchell, Shirley Mozier, Dan Murphy, Walter Newman.

JUNIOR CLASS

The Junior Class of 1947-48, one of the largest classes in L. H. S. had an enrollment of sixty one students. Mrs. Martha Smallwood was again chosen sponsor of the junior class.

The officers for the year were: President, Roger Jones; Vice-President, Bill Sandven; Secretary and Treasurer, Carol Armentrout.

You could always count on the class as being full of "vim, vigor and vitality" and always ready to participate in all of the school activities.

There were eleven girls in the Drum and Bugle Corps and five girls and five boys in the L. H. S. Band. Eighteen of the juniors were in Glee Club, eight girls and ten boys. These musical students were indeed talented and took part in many school sponsored activities.

The Football Homecoming was November 7th, and after quite an interesting election Annette Bland, a junior, was elected to reign as "Football Queen For 1947." Charlotte Campbell was the junior attendant to the queen and Joe Henry Bruch her escort.

The annual F. F. A. Barnwarming was held in the L. H. S. gymnasium October 10th. Carol Armentrout was our class attendant to the queen.

Basketball started with a bang and eight of the junior boys were on the "A" and "B" teams.

Six junior boys were members of the "L" Club and three of the five cheerleaders, Charlotte Hunter, Charlotte Campbell, and Virginia Dillender were from the junior class.

Three of the juniors were appointed to the Alamo Staff. They were Paula Bunn, Carol Armentrout, and Roger Jones.

The juniors were again in charge of the school paper the "L. H. S. Highlights" under the supervision of Mrs. Lucy English who was Latin and English instructor in high school.



First Row, left to right: Harvey Niffen, Kitty Page, Bonnie Painter, Norma Jean Pierce, Jerry Powell, Sutro Pritchett, Nancy Ralph. Second Row: Teddy Roberts, Charles Rose, Archie Ross, Bill Sandven, Imogene Shields, Betty Lou Shuford, Matilda Spanos. Third Row: Joyce Steers, Richard Stephens, Calvin Stevens, Billy Todd, Rachel Vanhooser, Evelyn Waddell, Helen Williams. Fourth Row: Keith Westcott.



Front Row, left to right: Carol Cunningham, Peggy Dell Fry, Beverly Brown, Marilyn McIlroy, Eulalie Haley, Peggy Garner, Betty Jo Creamer, Sue Burbridge, Doris Jayne Smith, Joan Pritchett, Joyce Mills, Betty Shipley. Second Row: Betty Ruffin, Cleo Rubemeyer, Lou Belle Higginbotham, Claudean Eddington, Mary Rose Umfleet, Jo Ann Hughart, Pat Parsons, Lorine Cozad, Sarah Tucker, Lillian Burnett, Mary Frances Fountain, Bonnie Sue O'Shea. Third Row: Meade Spears, Jane Turnbull, Betty Sue Verdier, Donna Kilby, Helen Pederson, Marjorie Anderson, Connie Johnson, Nancy Sue Flaherty, Joan Weekley, Ruth Ann Paschal, Joan Wurtz, Miss Mae Hofriechter. Fourth Row: James Brown, Bill Guengerich, Paul Burks, Kenny Marsh, Joyce Kindred, Harriet Colbert, Martha Elliot, Jerre Goodin, Betty Jo Haff, Gloria Caldwell, Anita Dean, Charles Sparks. Fifth Row: Junior Fritz, Joan Crisan, Carroll Brimer, Anthony Stark, James Lonergan, Mackey Dee Love, Charles Stephens, Lewis Ogle, Jimmy Guy Griffith. Sixth Row: Harry Elliott, Joe Penrod, Harold Elliott, Merrill Beck, Billy White, Gerald Charlesworth, Edwards Carr, Leon Chapuis, Gene Murrv.

SOPHOMORE CLASS

Although enrollment dwindled from seventy-two at the beginning of the year to sixty-nine the close, the sophomore class maintained the distinction of being the largest in Louisiana High School.

The sophomores were fortunate in having Miss Mae Hofriechter as the sponsor again. She proved herself both capable and efficient.

Class officers, elected at the first of the year, were: President-Gene Murry, Vice-President Peggy Dell Fry, Secretary-Treasurer-Ruth Ann Paschal. The officers were popular not only with the sophomores, but with the entire student body.

The sophomores claimed seventeen members in band, three of these being twirlers, thirty-one in the glee clubs, and several others, the majorette included, in drum and bugle corps.

At the Barnwarming, which is given annually by the F. F. A. boys, Peggy Garner was selected for the honor of sophomore attendant to the queen.

The sophomores took an active part in all sports. Gene Murry and Harry Elliott lettered for their second year in football, Bill Guengerich, Harold Elliott, Joe Penrod, and Meade Spears earned their first letter, and Paul Burks received a manager's letter in this sport. At the Homecoming game Jo Ann Hughart was elected sophomore attendant to the queen. Kenny Marsh was her escort.

Many of the sophomore boys went out for basketball and several took part in track.

This past year a new form of high school government, the Student Council, was introduced. Jo Ann Hughart and Gene Murry were the sophomore representatives.



First Row, left to right: William Love, Billy Allen, David Dove, Edward Muff, Raymond Ayersman, Edward Kanan, Robert Cadwallader, Charles Stoddard, Bobby Bland, Rule Campbell, Averon Love, Jimmy Garner, George Luther. Second Row: Dorothy Turner, Wanda Gibson, Delores Hager, Ruth Ann Painter, Patty Ann DeWeese, Jo Ann Pitzer, Bonnie Brown, Iola Steers, Betty Hudson, Lois Ladley, Betty Akers, Nancy Charlesworth, Jean Ann Wood, Mrs. H. R. Burns, Jr. Third Row: James Jasper, George Murry, Billy Bass, Frank Henderson, Bobby Baskett, Lester Herriman, John Mitchell, Bobby Penrod, Elmer Morton, Bobby Gast, Jimmy Stuart. Fourth Row: Shirley Garner, Marlene Saville, Lou Ella Blackwell, Katherine Waddell, Ann Roth, Peggy Jean Harvey, Nancy Sue Shive, Kitty Simpson, Rena Mae Holland, Martha Sparks, Nina Sue Strack, Bettie Monosmith. Fifth Row: Jeanne Rector, Melva Walker, Esther LaBar, Francis Patton, Darlene Burbridge, Goldie Rector, Katie Belle Parson, Roberta Roan.

FRESHMEN

The Freshman Class of 1947-48 with sixty-five members was the second largest in school. The class had its share of talented students who contributed to the many school activities such as sports, music, and assembly programs.

The officers were: President, Frank Henderson, Jr.; Vice-President, George Murry; and Secretary-Treasurer, Nina Sue Stack. Jeannie Rector was the student council representative.

At the F. F. A. Barnwarming, Nancy Sue Shive was chosen as queen. Jeannie Rector was freshman attendant.

Nina Sue Strack was freshman attendant to the Homecoming Queen. Jimmy Garner was her escort.

Mrs. H. R. Burns, Jr. was the class sponsor.





ACTIVITIES



Front Row, left to right: Betty Jane Akers, Sue Burbridge, Dorothy Chapuis, Carol Cunningham, Myra Lee Rottman, Imogene Griffith, Bonnie Evick, Shirley Hirsch, Marilyn McIlroy. Second Row: Carroll Brimer, Dorothy Mitchell, Ethel Mae Penrod, Jeanne Verdier, Bill Sandven, Sue Gibson, Florence Reed, Pauline Muff, Bettie Monosmith. Third Row: David Dove, Frank Henderson, Beverly Brown, Peggy Fry, Betty Jo Creamer, Virginia Bolomey, Betty Lou Shuford, Jane Ann Brown, Jerre Goodin, Mrs. H. R. Burns, Jr. Fourth Row: Kitty Page, Sutro Pritchett, Marianne Guengerich, Etta Burns, Malcolm Carroll, Meade Spears, Conne Sandven, Charles Rose, Bill Guengerich, Charles Nord, Jerry Powell, George Luther, Jimmy Stuart.

BAND

Director

Mrs. H. R. Burns, Jr.

Drum Majorette
Imogene Griffith

TWIRLERS
Bonnie Evick
Dorothy Chapuis
Shirley Hirsch
Marilyn McIlroy
Carol Cunningham
Sue Burbridge
Betty Jane Akers
Myralee Rottman

CLARINETS
Betty Jo Creamer
Virginia Bolomey
Betty Lou Shuford
Jane Ann Brown
Jerre Goodin
Etta Burns
Meade Spears
Jerry Powell
Bettie Monosmith

SAXOPHONES
Beverly Brown
Peggy Dell Fry
Charles Nord

BARITONES
Marianne Guengerich
Imogene Griffith

TRUMPETS
Carroll Brimer
David Dove
Sutro Pritchett
Charles Rose
George Luther
Jimmy Stuart
Dorothy Chapuis

TROMBONES
Malcolm Carroll
Bill Guengerich
Conne Sandven

BASS HORN
Frank Henderson

MELLOPHONE
Kitty Page

PERCUSSION
Dorothy Mitchell
Ethel Mae Penrod
Jeanne Verdier
Bill Sandven
Sue Gibson
Florence Reed
Pauline Muff

JUNIOR BAND

TRUMPETS

Edwards Carr
Jo Ann Hughart
Sutro Pritchett
George Luther
Jimmy Stuart
Gene Allison
Pat Parsons

CLARINETS

Jerry Powell
Meade Spears
James Jasper
Bettie Monosmith
Jane Ann Brown
Betty Lou Shuford
Marilyn McIlroy
Etta Burns
Betty Jo Creamer
Nina Sue Strack

SAXOPHONES

Peggy Dell Fry
Beverly Brown

TROMBONES

Malcolm Carroll

BASS HORN

Frank Henderson

FLUTES

Eulalie Haley
Peggy Garner

BARITONES

Imogene Griffith
Mary Ellen Bass

MELLOPHONE

Kitty Page

PERCUSSION

Bobby Gast
Joyce Kindred

Front Row, left to right: Nina Sue Strack, Bobby Gast, Frank Henderson, Joyce Kindred, Mary Ellen Bass, Imogene Griffith, Kitty Page, Edwards Carr. Second Row: Peggy Dell Fry, Beverly Brown, Betty Jo Creamer, Etta Burns, Marilyn McIlroy, Peggy Garner, Eulalie Haley, Betty Lou Shuford, Jane Ann Brown, Bettie Monosmith, Mrs. H. R. Burns, Jr. Third Row: James Jasper, Jo Ann Hughart, Meade Spears, Sutro Pritchett, Malcolm Carroll, Jerry Powell, George Luther, Jimmy Stuart, Gene Allison, Pat Parsons.





Front Row, left to right: Doris Wahl, Frances Patton, Betty Sue Verdier, Harriet Colbert, Shirley Mozier, Sylvia Cozad, Ruby Loneragan, Nancy Shive, Gertrude McCleery, Shirley Garner, Martha Elliott, Sarah Tucker, Connie Johnson, Matilda Spanos. Second Row: Carol Cunningham, Beverly Brown, Peggy Dell Fry, Sue Burbridge, Peggy Garner, Betty Jo Creamer, Eulalie Haley, Marilyn McIlroy, Bonnie O'Shea, Lou Belle Higginbotham, Katie Belle Parsons, Kitty Simpson, Dorothy Mitchell, Joyce Steers, Jeanne Ann Wood. Third Row: Lenora Baker, Marjorie Anderson, Mary Louise McKinzie, Donna Kilby, Wanda Henry, Carol Armentrout, Rosemary Anderson, Lois Ladley, Joan Wurtz, Imogene Shields, Paula Bunn, Charlotte Campbell, Pauline Kanan, Sandra Jasper, Mrs. H. R. Burns, Jr. Fourth Row: Dorothy Kuna, Dorothy Ferguson, Shirley Hirsch, Bonnie Evick, Doris Burbridge, Joan Bowles, Imogene Griffith, Pauline Muff, Florence Reed, Virginia Bolomey, Nancy Charlesworth, Marlene Saville, Joan Weekley, Arleta Martin, Rachel Vanhooser.

GIRLS' GLEE CLUB

The Girls' Glee Club has helped to educate the students of L. H. S. in many ways. Among them is the learning of wise use of leisure. The Glee Club period was always looked forward to by girls who enjoyed the relaxation of group singing and by those girls who had learned the appreciation of beautiful music and wished to further themselves in its art. Love of good music was promoted at all times.

The Girls' Glee Club, under the direction of Mrs. Robert Burns, Jr. contributed much to the community as well as to the school in presenting various programs during the year, both as a group, and in duets, trios, and sextettes.

The organization was composed of 55 members who were capably accompanied on the piano by Jeanne Wood. Music is truly the expression of the heart and soul and hearing the 55 voices of the Girls' Glee Club of L. H. S. would quite convincingly prove this to be true.



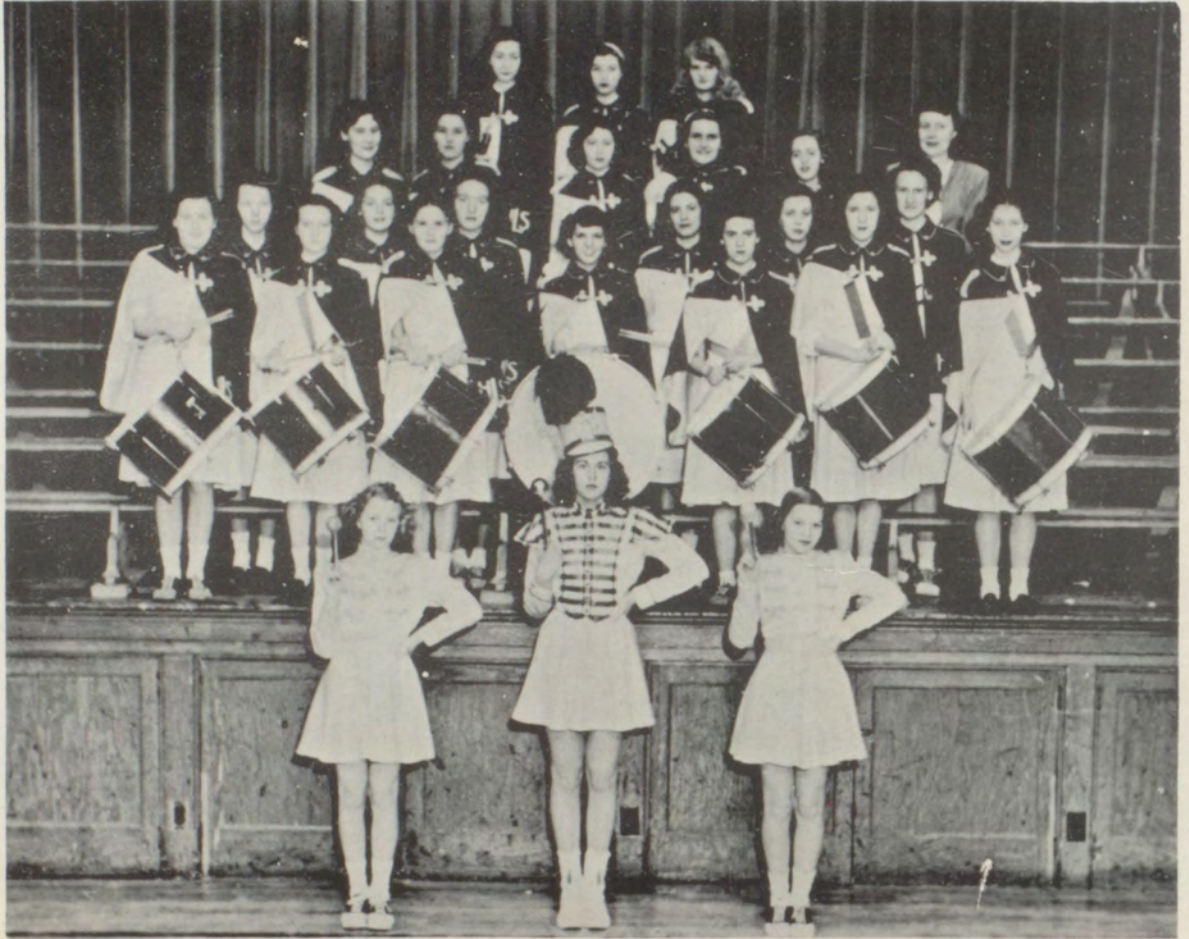
Beginning Front Row, left to right: Edwards Carr, Carroll Brimer, Jimmy Lonergan, Billy Jordan, Gene Allison, Bob Burbridge, Jimmy Guy Griffith, Bennie Griffith, Harry Elliott, Kenny Marsh. Second Row: Elmer Merton, Archie Ross, Tommy King, Joe Henry Bruch, Sutro Pritchett, Malcolm Carroll, Keith Wescott, Danney Robinson, Meade Spears, Billy Todd, Johnnie Dillender. Third Row: Jeanne Ann Wood, Ralph Bass, John Mitchell, Jimmy Garner, Anthony Stark, Leon Chapuis, Forest Turner, Teddy Roberts, George Lucas, George Sidwell, Mrs. H. R. Burns.

BOYS GLEE CLUB

The boys glee club, consisted of thirty-three voices, and was directed this year by Mrs. Roberts Burns, Jr.

Under her guidance, they studied not only the vocal aspects of music, but one day each week was devoted to its classical background.

Although many of the boys lacked previous experience, they laid an excellent foundation for an even better glee club next year.



First Row, left to right: Peggy Harvey, Carol Cunningham, Nancy Shive. Second Row: Matilda Spanos, Jane Turnbull, Donna Kilby, Virginia Dillender, Betty Sue Verdier, Joyce Mills, Cleo Rubemeyer. Third Row: Joan Wurtz, Charlotte Campbell, Imogene Shields, Annette Bland, Carol Armentrout, Mary Louise McKinzie. Fourth Row: Pauline Kanan, Wanda Henry, Doris Jayne Smith, Marian Hallows, Shirley Mosier, Mrs. Burns. Back Row: Sylvia Cozad, Lorine Cozad, Lillian Burnett.

DRUM CORPS

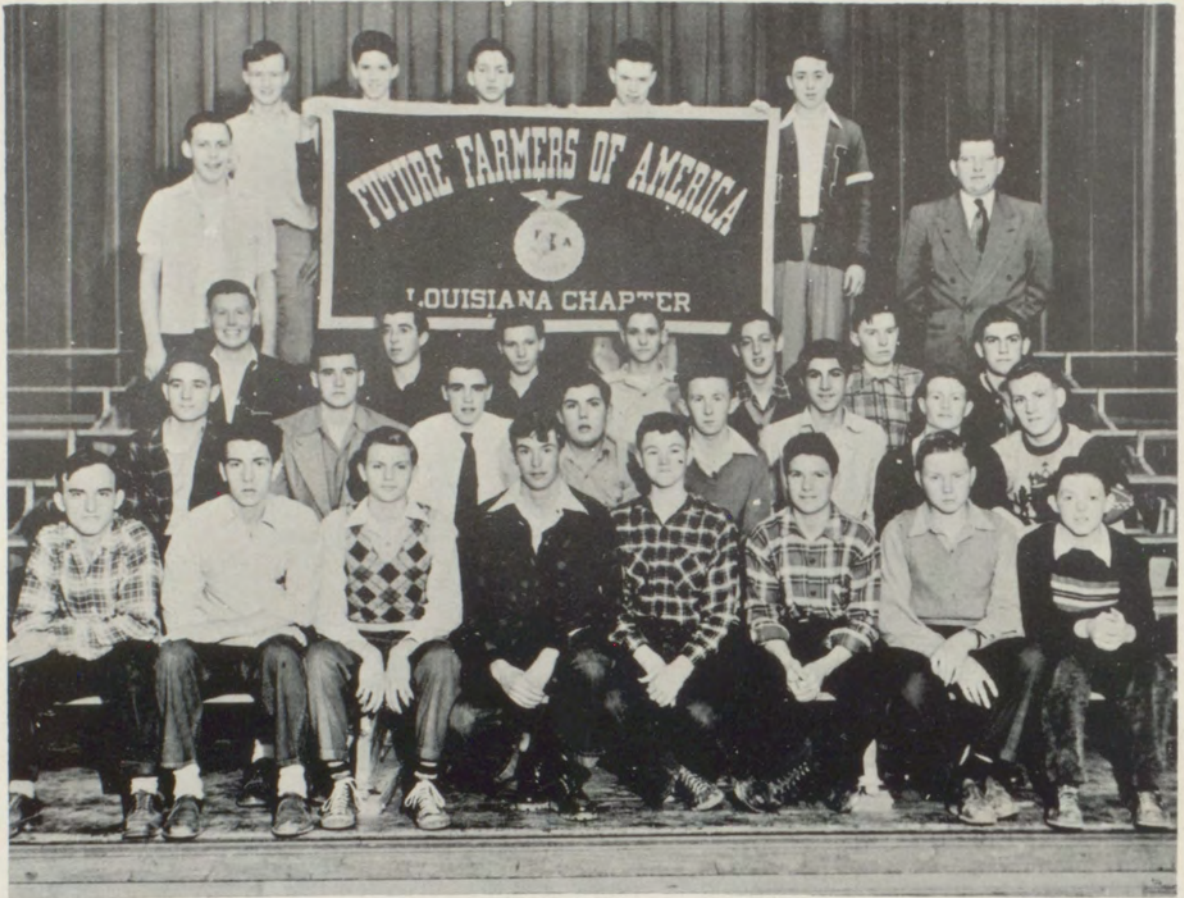
The Louisiana Drum and Bugle Corps was a very popular organization in our high school, and has been for many years. It held an enviable position in the school and community activities. The Drum Corps was composed of twenty-four members and was under the direction of Mrs. Roberts Burns, Jr.

The girls, while performing, made a very striking picture in their red and white uniforms. The Drum Corps marched at football games and various parades during the year.

This year, the Drum Corps acquired a new drum majorette, Carol Cunningham, a member of the Sophomore class.

Marion Hallows was the only student lost through graduation this year.





Beginning Front Row, left to right: John Benning, Ralph Bass, John Crisan, Mackey Love, Jimmy Guy Griffith, Billy White, Frank Hallows, Bobby Bland. Second Row: Elmer Morton, Joe Henry Bruch, Sutro Pritchett, Okey McCormick, George Sidwell, Lester Herriman, Bill Todd, Francis Johnson. Third Row: Gene Murry, Malcolm Carroll, Jerry Charlesworth, Leon Chapuis, Charles Sparks, Lloyd Love, Lewis Todd. Fourth Row: Bill Richard, George Murry, Bennie Griffith, Gene Allison, Bob Burbridge, Bill Adkison, Mr. William H. Ellis.

F. F. A.

The Future Farmers of America is a leadership training organization composed of only students enrolled in Vocational Agriculture. The motto of the Future Farmers is the keynote to the organization and the agriculture department.

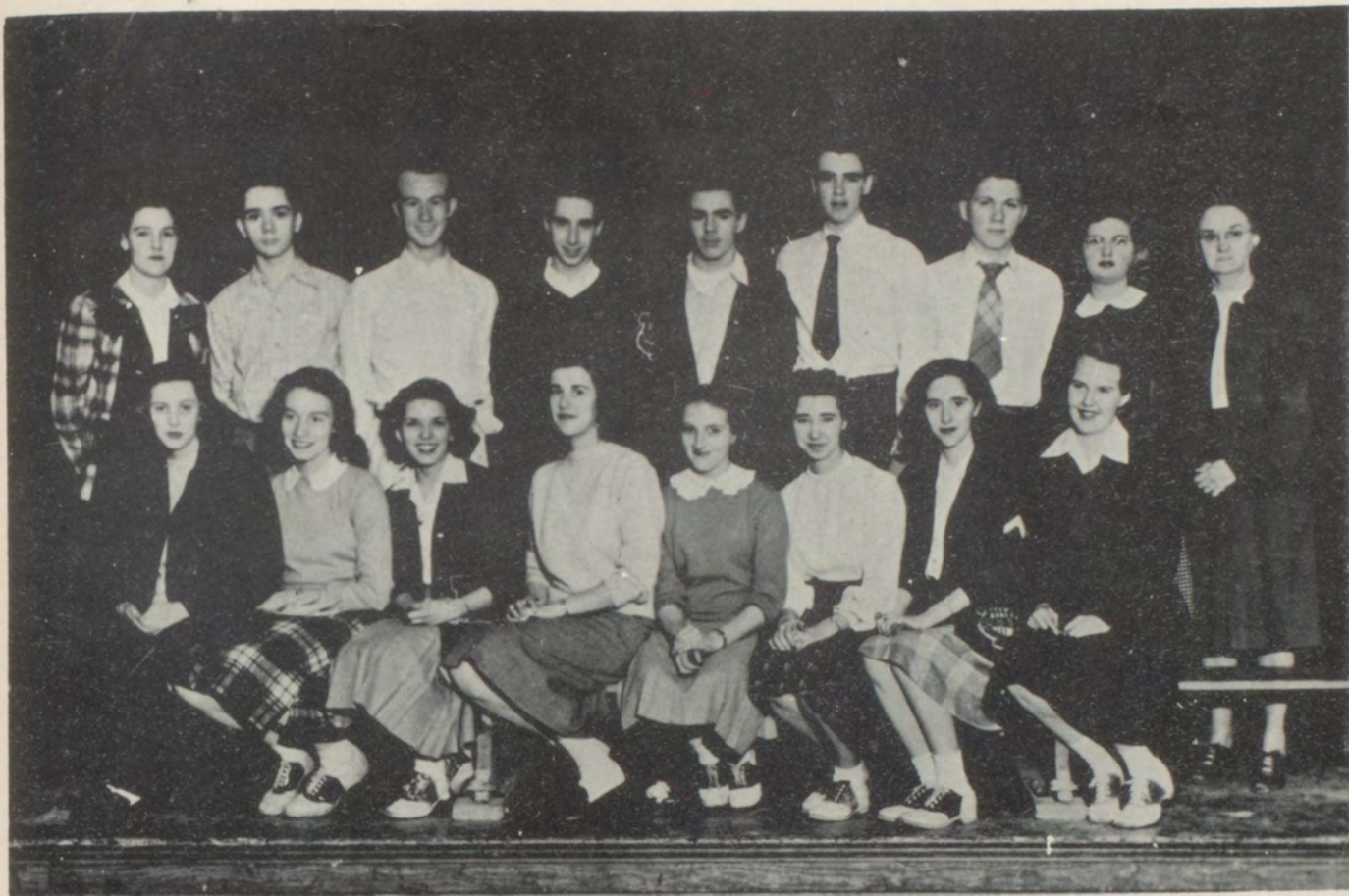
Learning To Do
 Doing To Learn
 Earning To Live
 Living To Serve

Officers of the organization the past year were: President, Lewis Todd; Vice-President, Bill Todd; Secretary, Bill Richards; Treasurer, George Sidwell; Reporter, Sutro Pritchett; Sentinel, Francis Johnson; Parliamentarian, Bob Burbridge; Advisor, Wm. H. Ellis.

There were four degrees obtainable in the Future Farmers Organization. They are: Green Hand Chapter Farmer, State Farmer, and the American Farmer.

The Green Hands wear a bronze pin and the Chapter Farmer a silver pin. A pin with a gold charm is awarded to the State Farmer. The American Farmer, the highest degree, is entitled to wear a gold key.

The events highlighting the F. F. A. activities each year are: One, the trip to the leadership training camp at the Lake of the Ozarks during summer vacation; second the annual barnwarming held each fall in the high school gymnasium.



Back Row, left to right: Wanda Henry, Edward Creamer, Frank Henderson, Charles Rose, Roger Jones, Sutro Pritchett, Bill Sandven, Mary Ellen Bass, Mrs. Lucy English. Front Row, left to right: Carol Armentrout, Imogene Shields, Virginia Dillender, Carol Cunningham, Nina Sue Strack, Lois June Ladley, Virginia Bolomey, Paula Bunn.

L. H. S. HIGHLIGHTS

Perhaps you noticed the seeming transformation of the Commercial Department into the city room of a bustling newspaper the day before the L. H. S. Highlights goes to press. There, amid the clatter of typewriters, ace reporters pound out stories and rush to make last minute deadlines.

The initial publication was sponsored by the junior class of last year. The Highlights has traveled a long way from its humble beginning to its present imposing publication in the Louisiana Press Journal bi-weekly on Tuesday.

Under the supervision of Mrs. Lucy English the Highlights was published by the junior class. The staff was as follows:

Editor-in-Chief	-----	Edward Creamer
Assistant Editor	-----	Mary E. Bass
Exchange Editor	-----	Imogene Shields
Vocational Agriculture Editor	-----	Sutro Pritchett
Home Economics Editor	-----	Wanda Henry
Feature Editor	-----	Carol Armentrout
Sports Editor	-----	Charles Rose
Copy Editors	-----	Sandra Jasper and Paula Bunn
Class Reporters	-----	
Freshman	-----	Nina Strack and Lois Ladley
Sophomore	-----	Carol Cunningham
Junior	-----	Roger Lee Jones
Senior	-----	Virginia Bolomey
General Reporters	-----	Virginia Dillender and Bill Sandven
Picture Editor	-----	Frank Henderson
Faculty Advisor	-----	Mrs. Lucy English

AGRICULTURE

Vocational Agriculture, a four year course, is principally for farm boys. The purpose is to gain knowledge and experience of their future business of farming by which they can have better days through better ways.

Every student is required to have a project. Complete ownership is required of the student. How the student manages his project is indicative of the success he will have in the future. Last year the agriculture boys had a labor income of \$11,964.44. The three major projects of agriculture students are: hogs, beef cattle, and field crops.

Farm shop is taught all four years to agriculture boys. The students may build anything they need. Hog houses and hog feeders are among the larger items and bookshelves and magazine racks are among the smaller items that are built.

In community service, the work of the agriculture boys is very outstanding. They test soil, vaccinate hogs, test cows for disease and render many other services free of charge. In the spring they will advise farmers on changes that can be made which will be profitable and also help the farmers layout contours and terraces. The agriculture judging teams will also help farmers select their best livestock.

The agriculture boys are looking to the future for:

Better Families
Better Farming
Better Food through balanced farming.



Left to Right: Marion Hallows, Sue Gibson, Imogene Griffith, Catherine Walker, Dorothy Kuna, Joan Bowles, Paula Bunn, Doris Wahl.

OFFICE GIRLS

One of the hardest working groups in school, was the office assistants who both courteously and efficiently were able to cope with any problem or last minute emergency. The teachers and the students were deeply grateful to these assistants, for through their tireless work and effort the school was able to make rapid strides toward the goal of perfect school management.

Student Council Takes Charge Of Louisiana's Tournament

Student Council Meeting Held Monday Of Last Week

The regular bi-weekly meeting of the Student Council of the Louisiana High School was held at 4:00 p. m. on Monday, December 2, in the high school agriculture room. Lewis Todd, president, presided over the meeting. All members were present except Conne Sandven, senior representative, Mrs. Jones.

Purpose Of New Student Council Is Explained

Louisiana High School Govt. has adopted the Student Council Government through this progressive move. L. H. S. has advanced toward the desired goal of the education of the policies of the students of this school now is a member of the National Association of Student Councils. The student body presidents of

Coach Grant And Wife Adopt Baby

The student body of LHS wishes to congratulate Mr. and Mrs. Eugene Grant on adopting their week old baby. Mrs. Grant has resigned her position as the seventh grade teacher in the school. Field

Conne Sandven Is Editor Of L. H. S. Alamo

Student Council and Faculty Elect Alamo Staff for '47-48

On Wednesday, November 19, a meeting of the faculty members and the Student Council was held in the history room for the purpose of electing the Alamo staff for the 1947-48 year book.

Lewis Todd, president of the Student Council, had charge of the meeting. The members of the staff were elected by a majority vote of the teachers and students present. Every student and teacher present staff must be on the Alamo staff.

Senior Girls Give Christmas Dance Dec. 26

The girls of the L. H. S. senior class have chosen Friday evening, December 26, as the date for their annual Christmas dance to be held at the Pike County Country Club. All high school girls and the girls of the 46 and 47 L. H. S. graduation classes are cordially invited. The dance will be dancing from 8:00 p. m. to 1:30 A. M. GEN. ST. CL.

Seniors Sponsor High School Dance

A dance sponsored by the senior class was held Friday night, December 20, in the Louisiana High School until 11:00 p. m. The dance was held in the history room of the school and the student body of the school was present. The dance was a success and the students enjoyed it very much. The dance was held in the history room of the school and the student body of the school was present. The dance was a success and the students enjoyed it very much.

OPERATES CORE MACHINE

A Coca-Cola machine is trying its best to help the Music Department raise money. It stands in the lower hall by the 366rs dividing Grades and High School. The machine holds eight cases of Coca-Cola which amount for the thought to be sufficient for the school's daily use. Under the direction of Mrs. Burns, Music Instructor, a student of that department is appointed for the weekly

Grace Berry Memorial Fund Is Growing

The Grace Berry Memorial fund is growing steadily toward the \$300 goal. The amount, when it has reached \$200, will be sent to Carolyn B. Berry, a scholar fund. If a student is deprived of the fund

Jane Brown To American Royal Livestock Show

Jane Brown, a popular student in Louisiana High School, attended the American Royal Livestock Show at Kansas City, Mo., October 24, 25, 26. Jane was one of 100 boys and girls who gathered from all parts of Missouri, Kansas, Arkansas, Oklahoma, and Iowa. The young people were acquainted with the show. Jane was one of the winners of the show. She was given the first prize in the show.



Front Row, left to right: Shirley Hirsch, Imogene Griffith, Bonnie Evick, Arleta Martin, Dorothy Mae Ferguson, Dorothy Widaman, Virginia Bolomey. Second Row: Catherine Walker, Mary Lou Stout, Joan Bowles, Marilyn Stout, Miss Lois Hastings, Pauline Muff, Florence Reed, Dorothy Kuna.

SECRETARIAL PRACTICE CLASS

The Secretarial Practice Class, composed of fourteen members could easily be termed "The Busy Bee" department. They not only learned the fundamental skills of being a secretary, but also obtained supplementary office practice.

At times during the year, we were without a school secretary and the class assisted the office in various ways. In carrying out these duties, the girls gained experience in cutting stencils and mimeographing. Some of the girls in the class were regular office assistants. Some types of work put out by the class included handbills, programs for athletic games, and plays, membership letters, and form letters.

The goal of the class was achieving the 100-word Gregg Shorthand Certificate. This required the taking of dictation at 100 words a minute and transcribing it with at least 95 per cent accuracy. However, a few worked for a 120 and 140 word certificate. Several students received certificates for speed and accuracy in typewriting.

Self-confidence, cooperation, and efficiency were some of the traits developed by carrying out the assignments of this class.



HOME ECONOMICS DEPARTMENT

The school year of 1947-48 was an eventful one for the L. H. S. Home Economics department. The classes gained practical experience in cooking, sewing, and interior decorating, as well as modeling for two fashion shows and participating in many extra-curricular activities.

The living room was completely redecorated during the year and several new pieces of furniture as well as colorful slip covers were added. Second year classes made new drapes for the entire department.

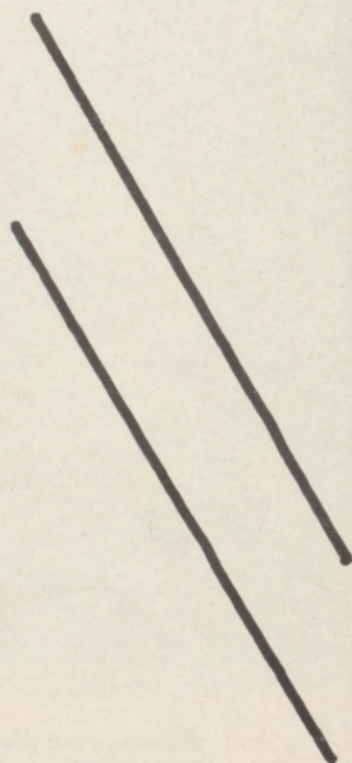
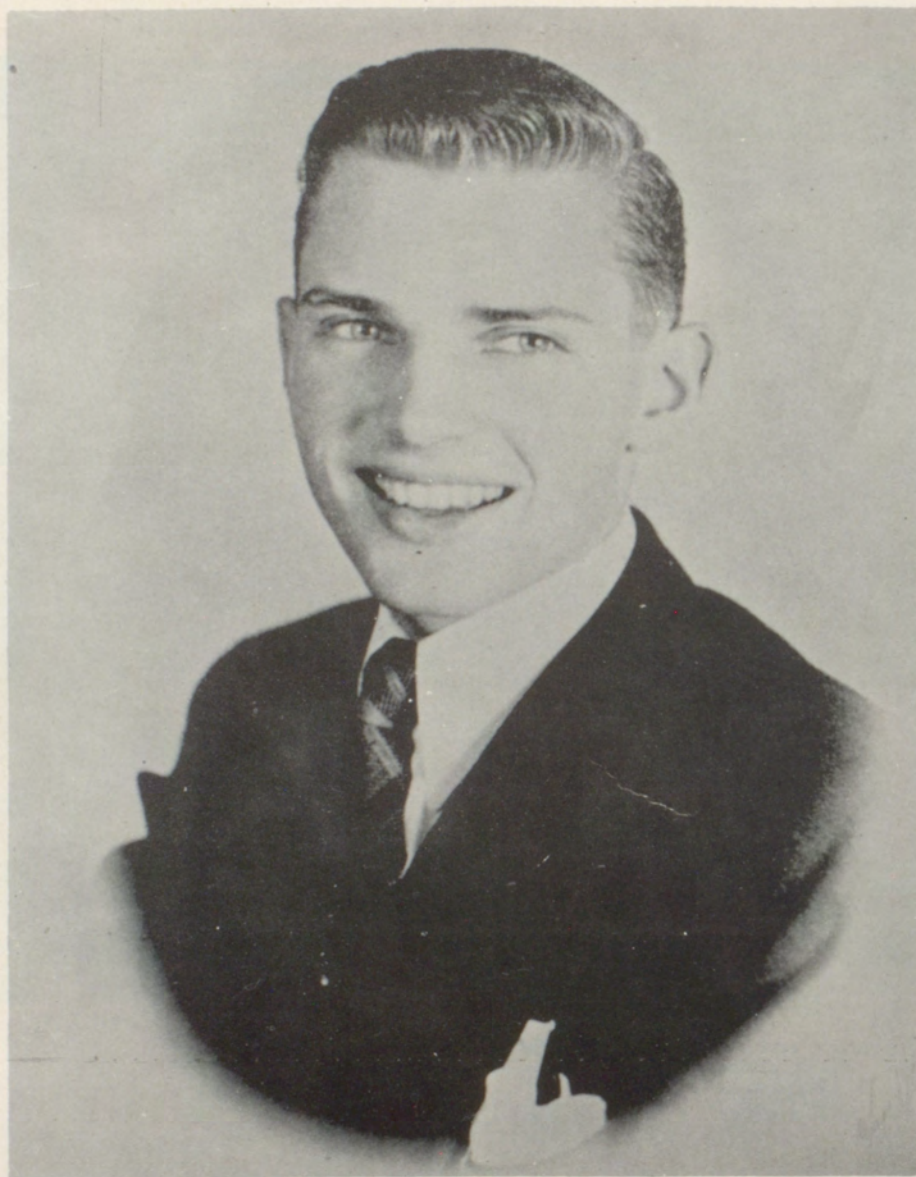
Home Economics girls operated a refreshment stand during all athletic events and put on both a fall and spring fashion show, modeling the clothes they made throughout the year. Just before Christmas vacation, the second annual buffet supper and party was held, and gifts were distributed. The school year was closed with a picnic for the entire department.



Beginning Front Row, left to right: Imogene Shields, Doris Wahl, Imogene Griffith, Jo Ann Hughart, Jeanne Rector. Second Row: Harvey Niffen, Roger Jones, Gene Murry, Conne Sandven, Lewis Todd, Frank Henderson, Mr. Galen E. Lankford.

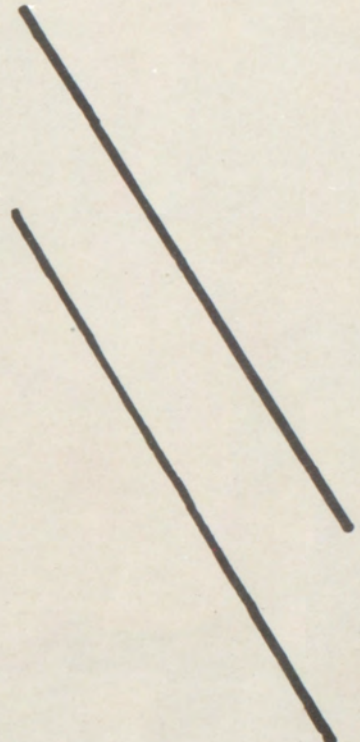
STUDENT COUNCIL

Every student upon entering high school automatically becomes a member of the Student Body. This past year, for the first time in the history of our school, a student government organization was incorporated and it did much toward furthering a closer relationship between faculty and students. It also brought about a clearer understanding of the problems that existed and diligently sought to solve them. The officers elected by the Student Body, namely: president, vice-president and secretary-treasurer were automatically members of the Student Council. These officers, the four class presidents, and a representative from each class composed the group. With the council as a working nucleus, and the cooperation of the entire Student Body, it successfully aided in sponsoring the Eighth Annual Basketball Tournament, a Valentine dance, Homecoming festivities, and other activities during the year.



CHARLES NORD

ALAMO KING



DOROTHY CHAPUIS

ALAMO QUEEN



Beginning Front Row, left to right: Sarah Jane Forgy, Annette Bland, Jeannie Pettigrew, Billy Wade. Second Row: Kenny Marsh, Joan Hughart, Forest Turner, Florence Reed, Charlotte Campbell, Joe Henry Brusch, Nina Sue Strack, Jimmy Garner.

HOMECOMING

Each year during the football season one game is set aside and officially designated as Homecoming. An effort is made at this time to have as many of the old grads and athletic heroes as possible present, in an expression of loyalty to the old high school.

The Homecoming game this year was played between Centralia and L. H. S., and although the Bulldogs put up a gallant fight, we were beaten 20 to 7.

The climax of the gala event was reached with the crowning of the queen. This year a junior, lovely Annette Bland, had the honor of being crowned queen by Lewis Todd, president of the student body. She was attended by class queens and their escorts. They were: Florence Reed (senior) and Forest Turner; Charlotte Campbell (junior) and Joe Henry Bruch; Jo Ann Hughart (sophomore) and Mackey Dee Love; Nina Sue Strack (freshman) and Jimmy Garner. Trainbearers were Jeannie Pettigrew and Sarah Jane Forgy, while Billy Wade carried the crown.

Following the game a dance was held in the school auditorium in honor of the queen and her attendants. Also present were school guests from Centralia and visiting alumni who made the dance a success despite our defeat.

SPECIAL HONORS

D. A. R. PILGRIMAGE

This year Doris Wahl was selected by the Senior Class as the candidate for the D. A. R. Pilgrimage to Washington D. C. She was chosen from the three names submitted by the faculty on the basis of service, patriotism, leadership, dependability, and scholarship.

To the student ranking first in a competitive examination given to nominees throughout the state, a trip with all expenses paid to our nation's capital will be awarded.

OUTSTANDING SOPHOMORE

Bill Guengerich was selected as the Outstanding Sophomore of L. H. S., by the faculty in concurrence with the votes of the student body.

Chosen from the upper 25% of his class, he was selected from the five nominees believed to qualify as excelling in the following qualities---dependability, service, leadership, and patriotism.

Through a program sponsored by the Women's Federated Clubs, of which the Century Club is a member, he was given a trip to Jefferson City on April 2, along with the many other sophomores chosen from high schools throughout the state.

F. F. A. BARNWARMING

Miss Nancy Shive, escorted by Joe Bruch, was crowned queen of the Third Annual Barnwarming by Lewis Todd, president of the F. F. A. The attendants and their escorts were: Miss Imogene Griffith, senior, escorted by Bob Burbridge; Miss Carol Armentrout, junior, escorted by Wendell Cullwell; Miss Peggy Garner, sophomore, escorted by Bill Adkison; Miss Jeanne Rector, freshman, escorted by Bobby Bland.

ALUMNI ASSOCIATION

The sixth annual Alumni Association Banquet was held December 29, 1947 and 306 alumni and guests present.

A new feature, inaugurated at this banquet, was the plan of honoring the class entitled to celebrate its Silver Anniversary.

Fifteen of the twenty-nine members of the class of '22 came to support fellow member, W. P. Haley, toastmaster.

The guest speaker was The Honorable Clarence Cannon who spoke about the international situation.

The association honored the members of Miss Grace Berry, for many years a favorite teacher at L. H. S., by contributing \$50.00 to a scholarship fund in her honor.

Officers for the year were elected as follows: president, Mr. Sam Paul; vice-president, Mr. Ralph Ince; secretary, Miss Lois Hastings; treasurer, Dr. James E. Ligon.



Seated, Left to Right: Mary Lou Stout, Marianne Guengerich, Sue Gibson, Marilyn Stout. Standing, Left To Right: Doris Wahl, Imogene Griffith, Shirley Hirsch, Bonnie Evick, Florence Reed. Second Row: Charles Nord, Conne Sandven, Jack Reed, Jack Ince, Miss May Hofrieter, Bill Adkison.

Senior Play

"LOVE IS TOO MUCH TROUBLE"

Presented

May 7, 1948

CAST

Toasty
 Joe Burke
 Connie
 Monica Bates
 Ebb Dunham
 Flo Dunham
 Pinky Hamilton
 Oggy McClosky
 Shirley Bradford
 Sugar Lou Jackson
 Dr. Pillsy
 Miss Emily Ross
 Cliff Hayward
 Mrs. J. Worthington Bates

Marianne Guengerich
 Charles Nord
 Imogene Griffith
 Doris Wahl
 Mary Lou Stout
 Marilyn Stout
 Conne Sandven
 Jack Ince
 Florence Reed
 Bonnie Evick
 Jack Reed
 Shirley Hirsch
 Bill Adkison
 Sue Gibson

Miss May Hofrieter

Director



Seated, Left to Right: Mary Ellen Bass, Virginia Dillender, Carol Armentrout. Standing, Left to Right: Paula Bunn, Junior Newman, Edward Creamer, Jerry Powell, Lowell McCallister, Mrs. M. M. Pettigrew, Tommy King, Sandra Jasper.

Junior Play

"HERE COMES CHARLIE"

Presented

April 2, 1948

CAST

Charlie Hopps
 Aleck Twiggs
 Mrs. Farnham
 Larry Elliott
 Ted Hartley
 Mrs. Caroline Smythe Kersey
 Vivian Smythe Kersey
 Mortimer Smythe Kersey
 Nora Malone
 Tim McGrill

Virginia Dillender
 Lowell McCallister
 Paula Bunn
 Edward Creamer
 Jerry Powell
 Sandra Jasper
 Carol Armentrout
 Tommy King
 Mary Ellen Bass
 Junior Newman

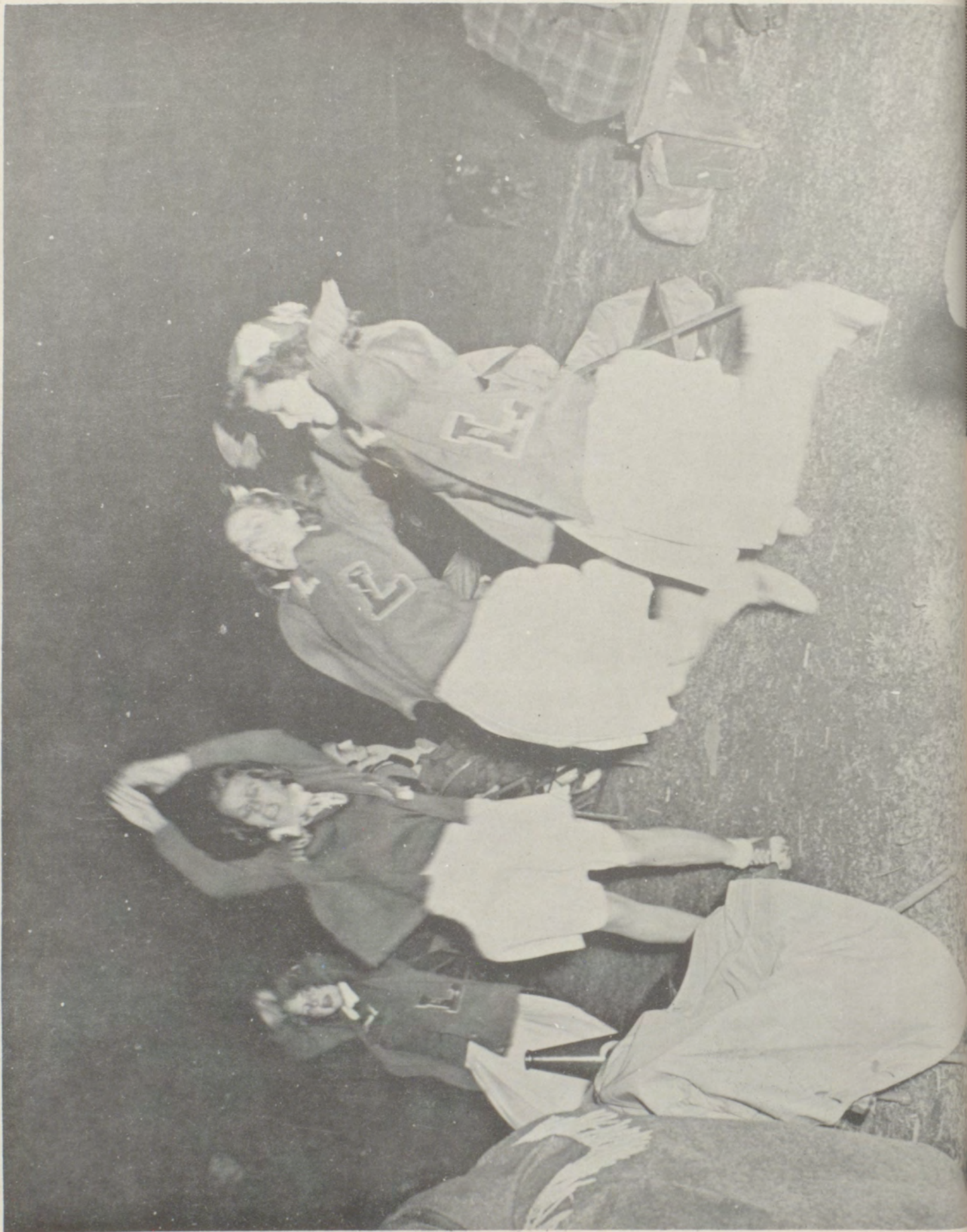
Mrs. M. M. Pettigrew

Director











ATHLETICS

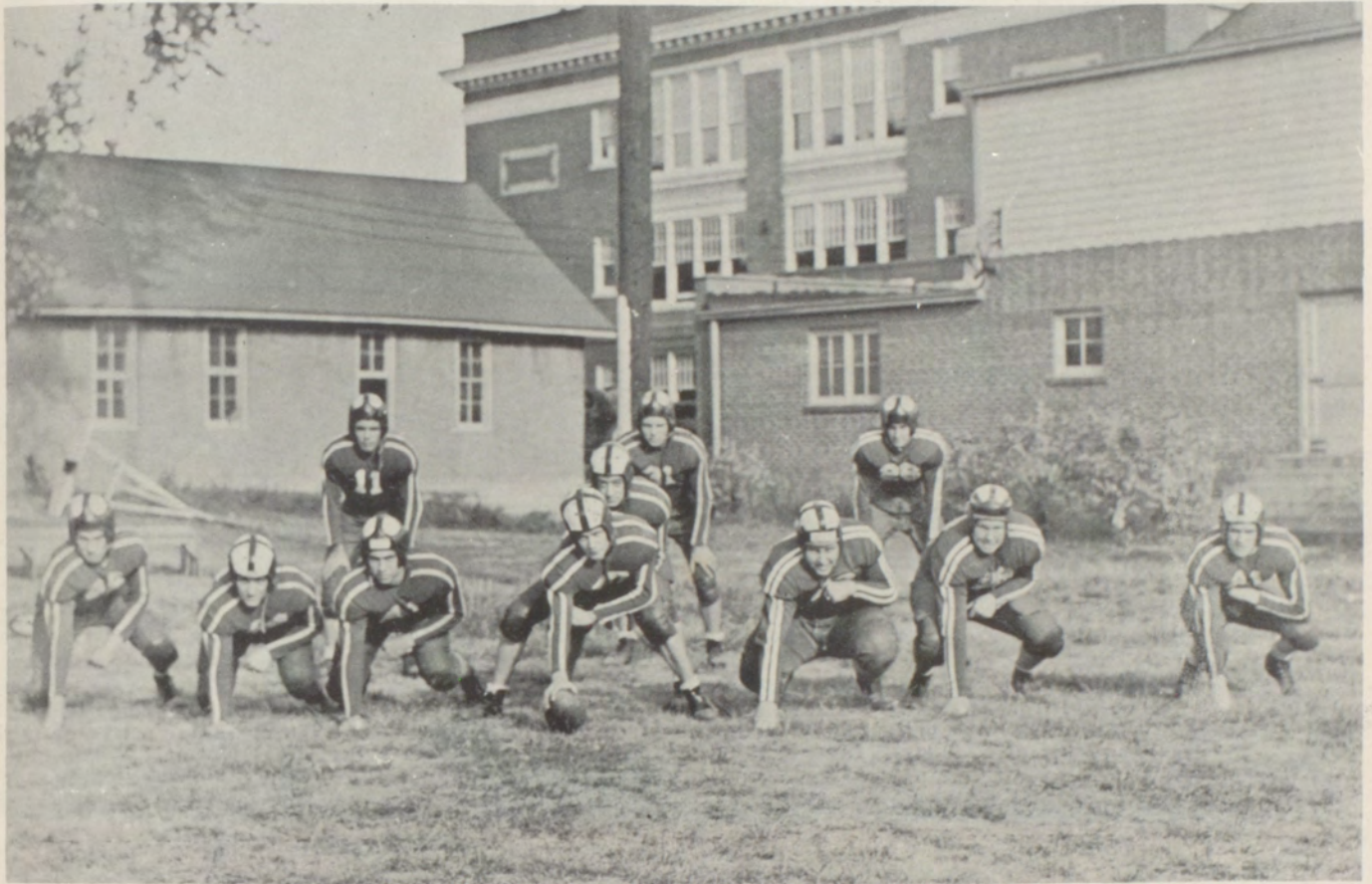


Beginning Front Row, left to right: Bobby Ince, Meade Spears, George Luther, Junior Newman, Jimmy Garner, Charles Nord, Bill Henry Bill Shive. Second Row: Averon Love, Gordon Dudley, Harry Elliott, Jack Ince, Lewis Todd, Gene Murry, Keith Wescott, Johnnie Dillender, Robert Cadwallader. Third Row: R. D. Hamlett, Joe Penrod, Billy Jordan, Gene Allison, Dan Murphy, Francis Johnson, Teddy Roberts, Bill Guengerich, Coach Eugene Grant. Fourth Row: Roger Jones, Dave Dean, Bob Burbridge, Jerry Powell, Bill Sandven, Howard Corum, Harold Elliott, John Bray, Ralph Hammack.

FOOTBALL

The 1947 football season started with a bang when the Bulldogs trimmed Pleasant Hill 19 to 0. After this game the Bulldogs had high hopes of a successful season. In the next game the Bulldogs lost to the powerful Pittsfield eleven by a score of 20 to 0. The Bulldogs felt pleased, however, to hold this powerful team to 20 points. After this game the Louisiana eleven profited by the pointers given by Pittsfield, and came back a week later and fought the M. M. A. might gridiron team to a 6 to 6 tie. This spoiled the undefeated, untied record of M. M. A. After this game it seemed that Lady Luck turned against the Louisiana team. Though the Bulldogs steadily improved, they lost their remaining games by close scores. Merrill Henderson, the passing quarter-back of the 1946 eleven, had graduated which left the Bulldogs to develop another quarter-back that could present an aerial attack. The passing combinations of Nord to Spears and Guengerich improved steadily throughout the season. Jack Ince and Ralph Hammack back from last year also helped to spearhead the passing attack. Spears and Guengerich, sophomores, received letters for the first time this year, and should be counted upon for more pass catching next year. Ralph Hammack, a two year letterman, will be back again but Jack graduated.

Coach Grant named nineteen Bulldogs to receive the block letter "L" in football. Charles Nord and Gordon Dudley were elected captains for the 1947 season. The team lost six lettermen because of graduation. They were: Bill Adkison, Lewis Todd, Charles Nord, R. D. Hamlett, Jack Ince, and Gordon Dudley. With thirteen lettermen coming back plus many new possibilities the Bulldogs are looking forward to a successful season next year.



Beginning, Left to Right: Right end, Jack Ince; Right tackle, Francis Johnson; Right guard, Lewis Todd; Center, R. D. Hamlett; Left guard, Keith Wescott; Left tackle, Gene Murry; Left end, Ralph Hammack; Right half-back, Roger Jones, Quarter-back, Bill Adkison; Full-Back, Charles Nord; Left half-back, Junior Newman.

1947 FOOTBALL SCHEDULE

	OPPONENTS	LOUISIANA
Pleasant Hill	0	19
Pittsfield	20	0
MMA	6	6
McCooey	7	0
Palmyra	12	6
Shelbina	7	0
Centralia	20	7
Macon	26	13



Beginning front Row, left to right: Roger Jones, Jimmy Stuart, George Luther, Rule Campbell, Johnnie Dillender. Second Row: Meade Spears, Bill Gungerich, Billy Jordan, Kenny Marsh, Bill Sandven, Harvey Niffen, Charles Rose. Third Row: Coach Eugene Grant, Bill Shive, Danney Robinson, Teddy Roberts, Forest Turner, Charles Nord, Bill Adkison, Paul Burks.

BASKETBALL

Box Scores

	Visitors	Home Team
McCooley	23	45
Vandalia	30	49
Bellflower	32	42
Pleasant Hill	29	44
Mexico	38	37
Mexico	28	27
McCooley	28	24
Elsberry	39	32
New Canton	41	28
Bowling Green	52	36
Bowling Green	48	28
New Canton	68	38

BASKETBALL

The Louisiana Bulldogs were fairly successful during the 1947-48 season and emerged with a total score of eleven wins and fourteen losses. This record coupled with the fact that they were the tournament winners of the Vandalia Invitational Tournament proves their fighting qualities.

Louisiana began the season by entering the Bowling Green Tournament in November. Here the Bulldogs won their first game and then proceeded to lose the next two which eliminated them from the tournament. Early in the season the Bulldogs lacked playing experience but Mr. Grant soon had the boys under routine training and within a few weeks the Bulldogs were considered a formidable aggregation.

Danney Robinson had the honor of being high point man for the season with 268 points and was also named on the "all star" team in the Vandalia Tournament. Billy Shive received honorable mention. The Bulldogs scored a total of 806 points against 891 scored by their opponents.

Bill Adkison, high scoring guard, was ruled ineligible at the end of the first semester of school because of the ninth semester ruling. Bill Shive was moved up to play the position of guard.

Teddy Roberts, a new recruit at the beginning of the year, saw much action at center. Teddy improved rapidly from week to week and he undoubtedly will be a valuable Bulldog next year.

Charles Nord played the other guard position in an efficient manner. Other Bulldogs who saw action on the first team were: Forest Turner, Roger Jones, Meade Spears, and Bill Sandven.

The new basketball suits which were purchased in December did much to improve the looks of the squad.

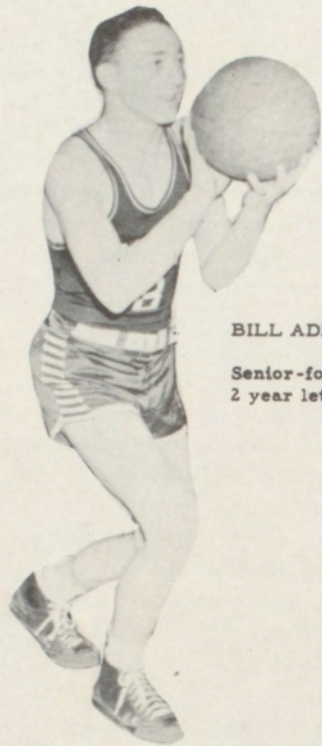
The Louisiana "B" team had considerable success and came out on the long end of the score ten times during the year. They suffered six losses. The Bullpups were entered in three tournaments and reached the consolation finals in the Louisiana Tourney where the Illinois School for the Deaf beat them out for consolation.

Basketball letters were awarded the following boys for the season of 1947-48: Bill Shive, guard; Danney Robinson, forward; Bill Adkison, guard; Teddy Roberts, center; and Charles Nord, guard.





CHARLES NORD
Senior-guard
2 year letterman



BILL ADKISON
Senior-forward, guard
2 year letterman



BILL SHIVE
Senior-guard
1 year letterman



DANNEY ROBINSON
Senior-forward
4 year letterman



TEDDY ROBERTS
Junior-center
1 year letterman



Left to Right, Jeanne Rector, Charlotte Hunter, Shirley Hirsch, Charlotte Campbell, and Virginia Dillender.

L. H. S. "GROWLERS"

Boom-a-lacka, Boom-a-lacka
 Bow-Wow-Wow
 Chick-a-lacka, Chick-a-lacka
 Chow-Chow-Chow
 Boom-a-lacka, Bow-Wow
 Chicka-a-lacka, Chow-Chow
 Come on, Louisiana
 SHOW'EM HOW

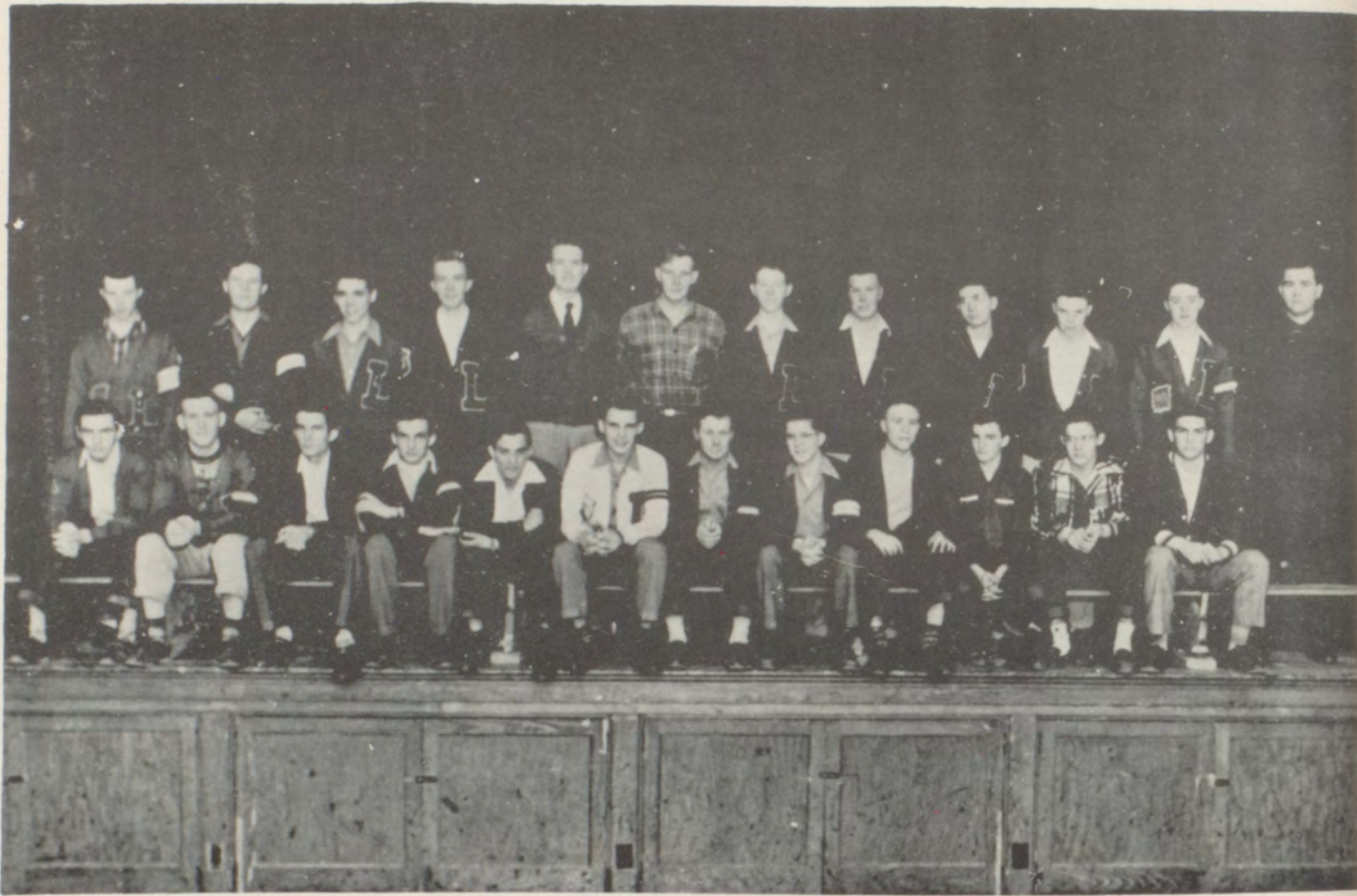
These human generators of pep and enthusiasm appeared regularly during every football and basketball game and led students and alumni in cries for victory. They certainly contributed in no small measure to the success of the athletic events in which L. H. S. participated throughout the year. As pep leaders during rallies and assemblies they did much to further school spirit.

Of the five girls, four of them were cheerleaders for three years, Shirley Hirsch, Charlotte Campbell, Virginia Dillender, and Charlotte Hunter.

Shirley Hirsch, a Senior, was cheerleader her Freshman, Junior, and Senior years. "Sissy", the head cheerleader, was very active and everyone will miss her from the Pep Squad next year.

Charlotte Campbell, Virginia Dillender, and Charlotte Hunter, all in the Junior class, were in the Pep Squad since they were Freshman.

Jeanne Rector, Freshman, was the youngest member of the group.



Beginning Front Row, left to right: Roger Jones, Francis Johnson, Jack Ince, Junior Newman, Joe Penrod, Charles Nord, Wendell Culwell, Billy Jordan, Harold Elliott, Johnny Dillender, R. D. Hamlett, Lewis Todd. Second Row: Danny Robinson, Harry Elliott, Gordon Dudley, Meade Spears, Paul Burks, Keith Wescott, Bill Gungerich, Gene Murry, Jack Reed, Bob Burbridge, Bill Adkison, Coach Eugene Grant.

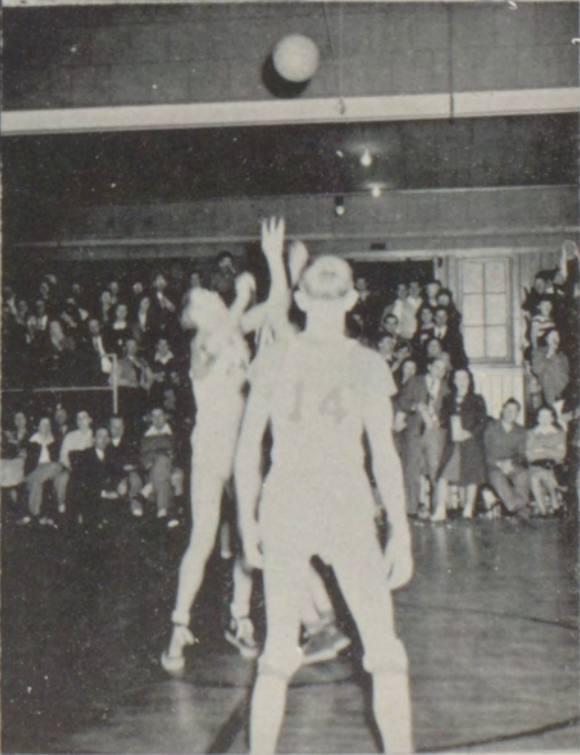
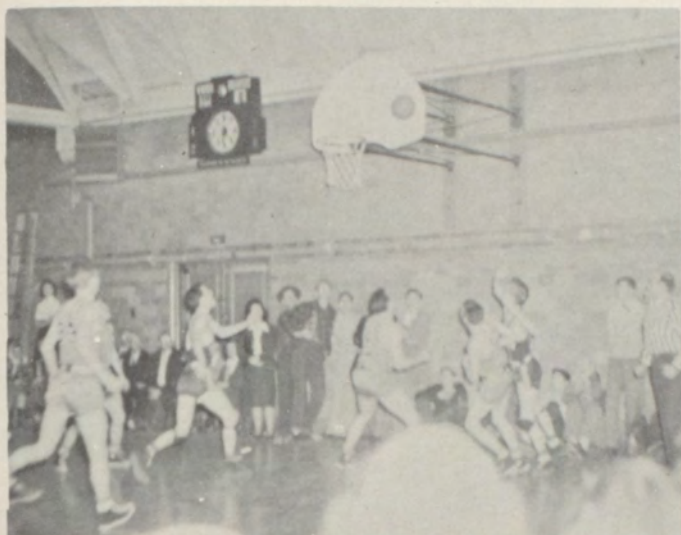
"L" CLUB

The L Club, sponsored by Coach Eugene Grant, is the one organization in which every boy in high school covets membership. L Club membership is conclusive proof of a boy's outstanding athletic ability and knowledge of fair play. Nine boys were honored by being admitted as members this year.

There were twenty-six members of the club including nine Seniors who graduated this year. Charles Nord was elected president, Bill Adkison, vice-president, and Roger Jones, secretary-treasurer. The L Club sponsors a party and picnic annually and its members are allowed to invite girls on these social occasions.

An L Club meeting was held monthly throughout the year in order that all business of the club could be handled properly.

8TH ANNUAL LOUISIANA
INVITATIONAL BASKETBALL
TOURNAMENT



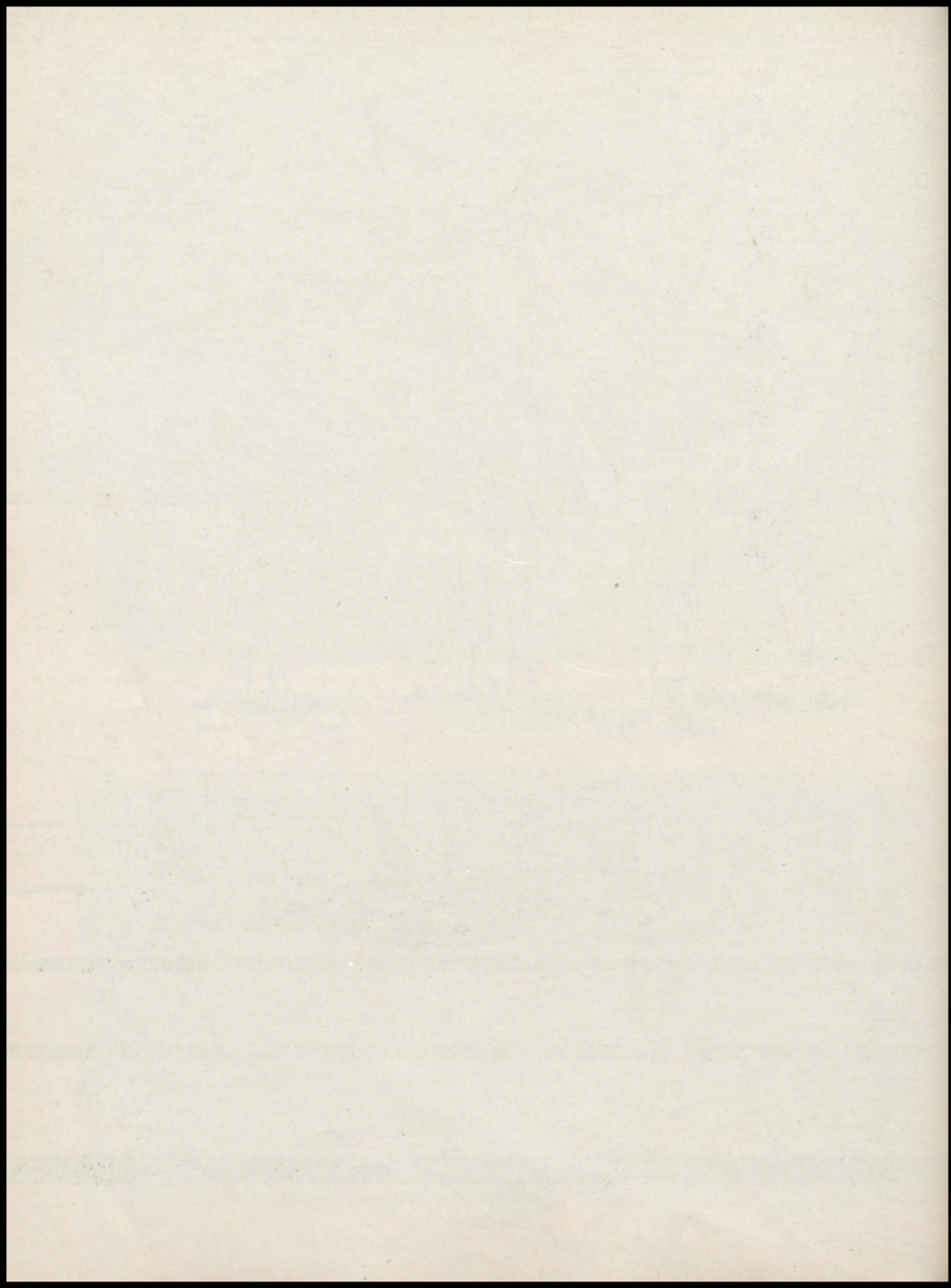


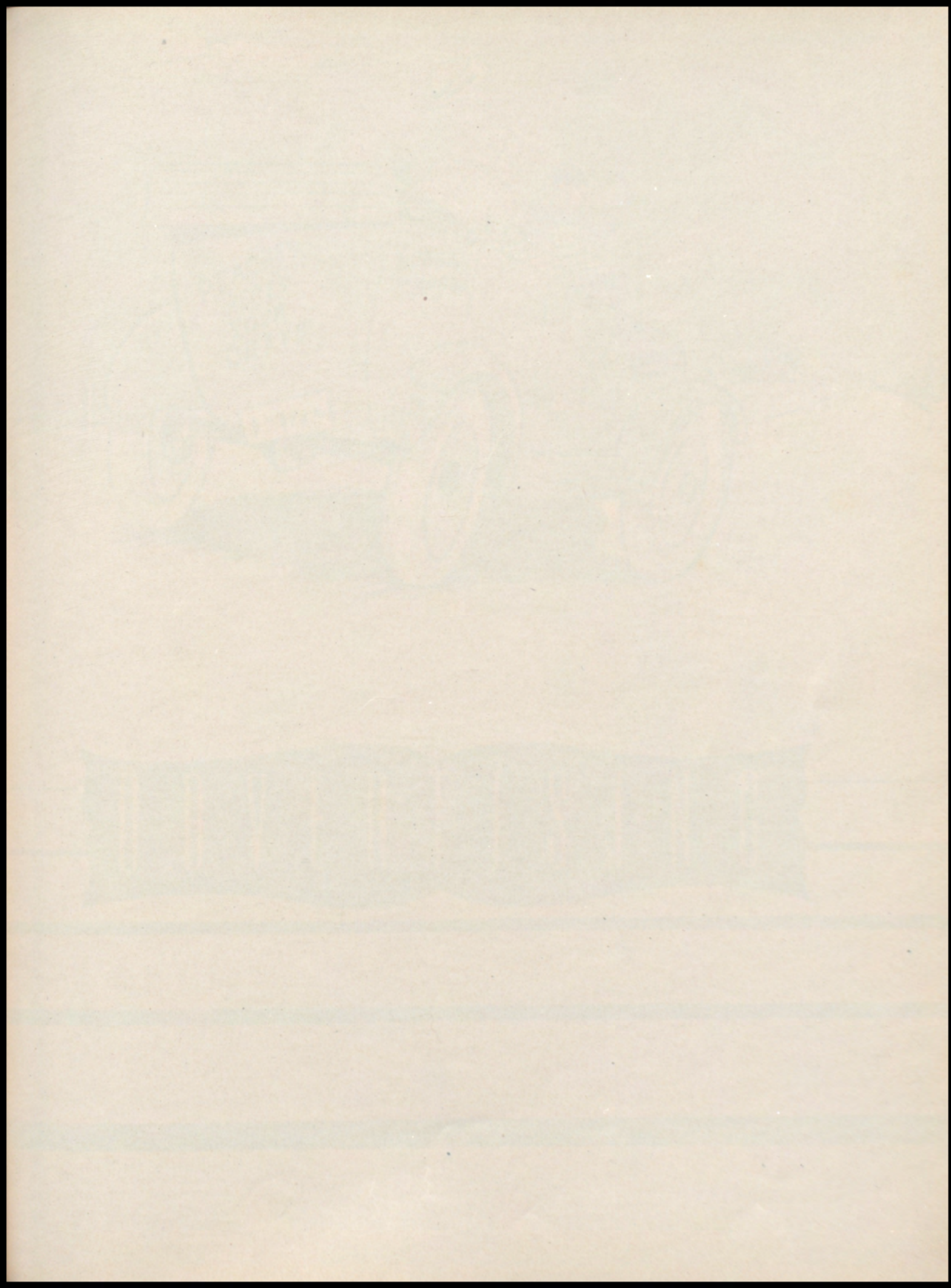
These pictures were taken at the Homecoming Game with Centralia. Louisiana players visible in the top picture: R. D. Hamlett-No. 77; Pete Johnson-No. 44; and Charles Nord-directly in front of the official. Bottom picture: Bill Adkison reeling off yardage.

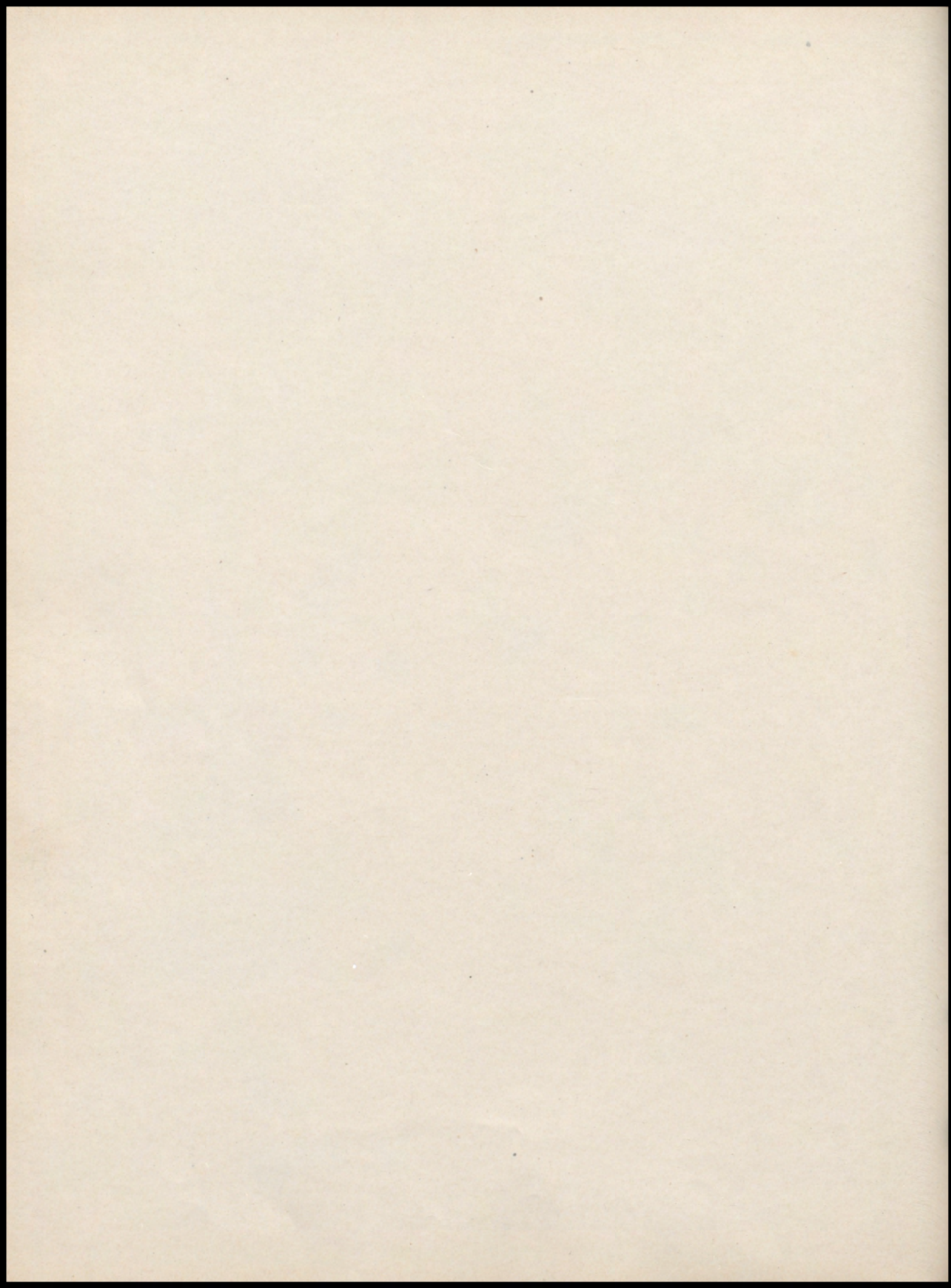


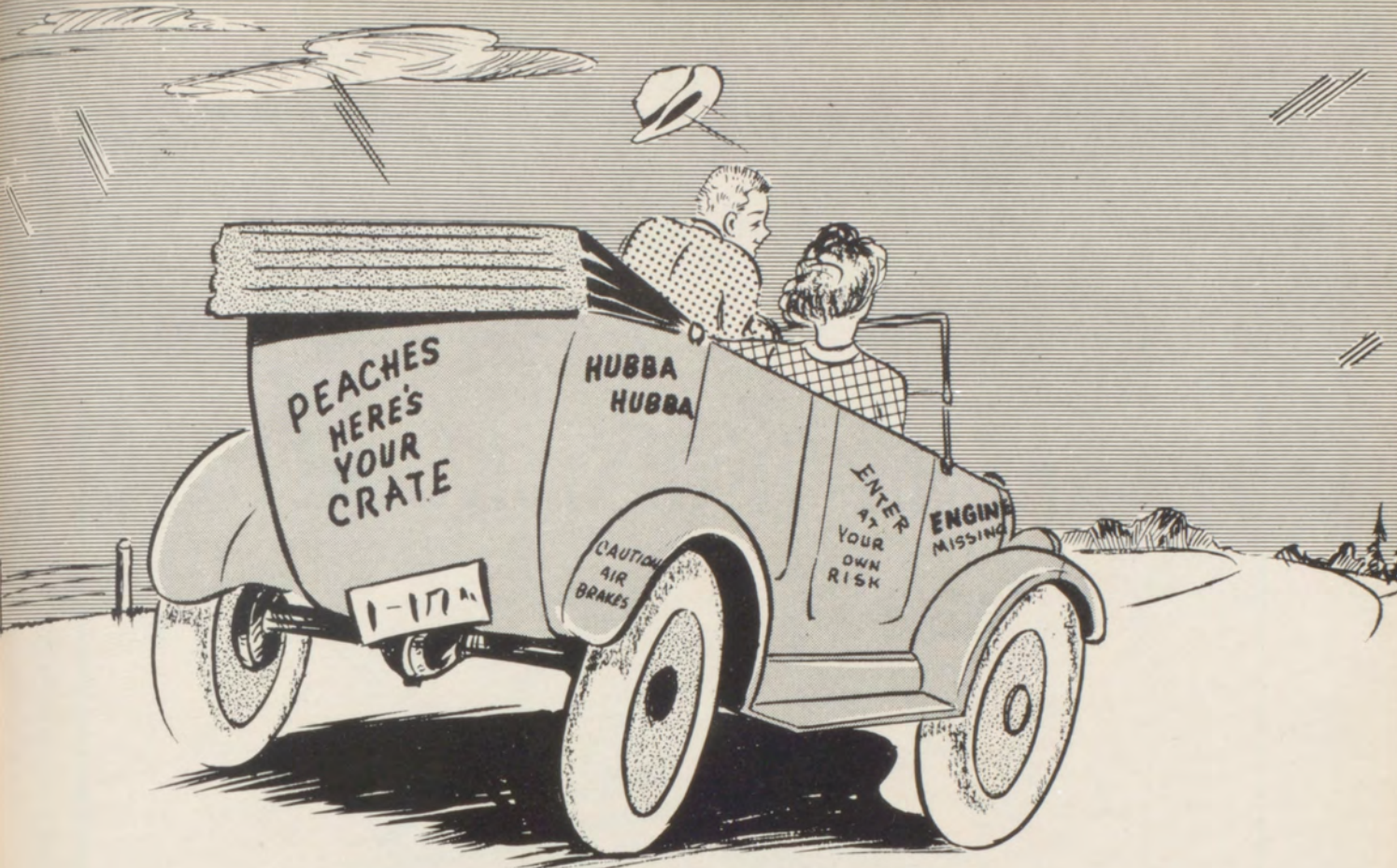


A U T O G R A P H S

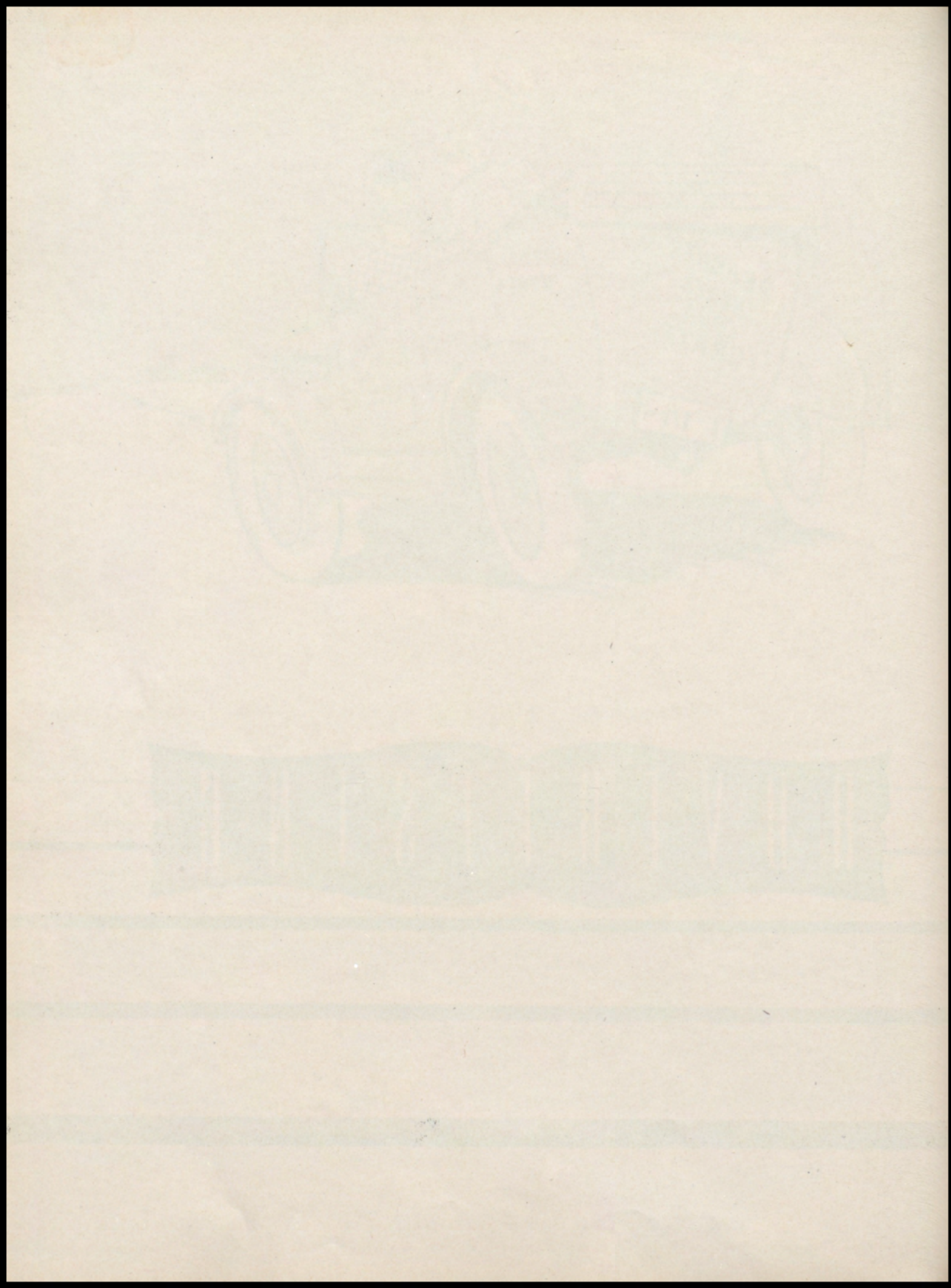








ADVERTISING

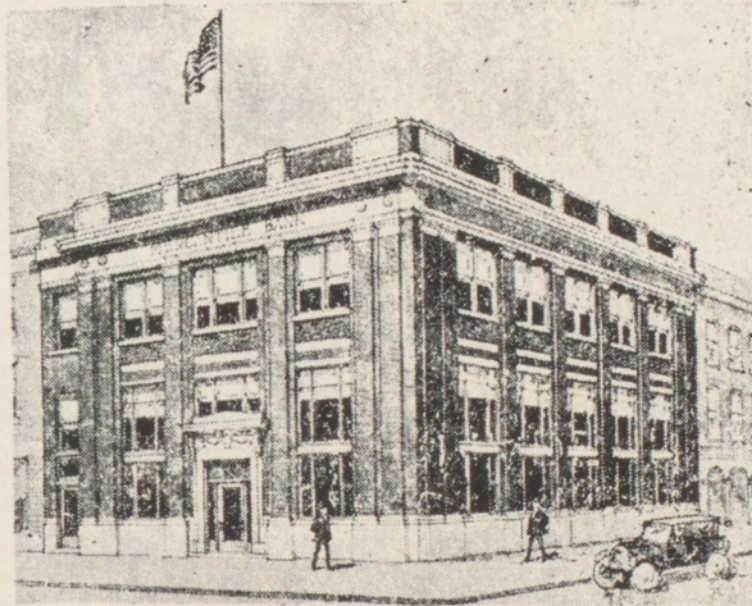


Capital \$50,000.00

Wm. B. Haley, President
J. H. McCune, Vice-President

Lloyd Waugh, Cashier
W. A. Reineking, Asst. Cashier

The Mercantile Bank



EVERY BANKING SERVICE CONSISTENT WITH
SOUND BUSINESS PRACTICE AND WILL FULL
CONSIDERATION FOR THE WELFARE OF OUR
CUSTOMERS AND THE ENTIRE COMMUNITY.

MEMBER FEDERAL DEPOSIT INSURANCE CORPORATION



LOUISIANA

MISSOURI



SERVING THIS COMMUNITY
CONTINUOUSLY FOR MORE THAN
SIXTY-ONE YEARS

Bank of Louisiana

-- SINCE 1887 --

MEMBER FEDERAL DEPOSIT INSURANCE CORPORATION

Class of 1948

Congratulations!

Stark Bro's. Nurseries & Orchards Company

Wish to extend to each member of the 1948
Graduation Class of the Louisiana High School
our hearty congratulations.

The preparation which you have received
at the Louisiana High School should fit you
well for success in your life-work.

It is our sincere wish that the future will
bring to you fulfilment of all your worthy
ambitions.

FOR SEVENTY-FIVE YEARS

Lacrosse Lumber Co.

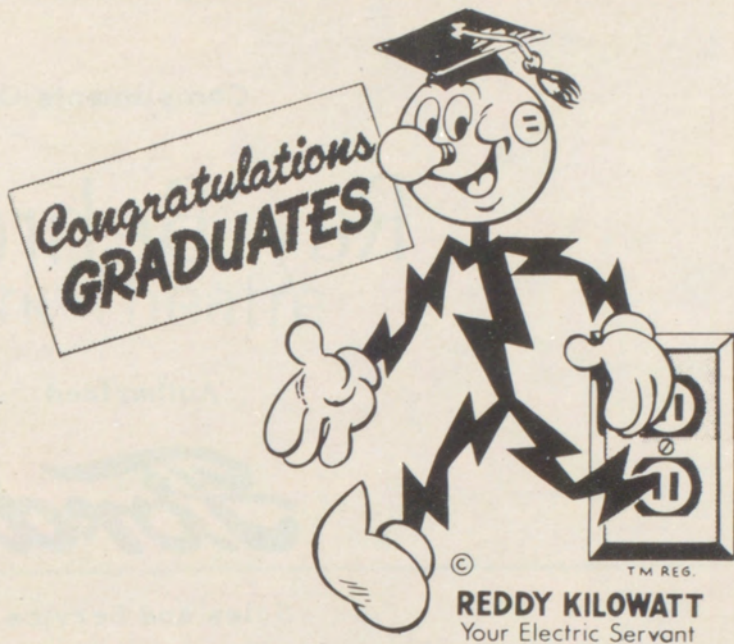
HAS BEEN

A

LOUISIANA INSTITUTION

1873 - 1948

BEST
WISHES
FOR
A "BRIGHT"
FUTURE



Missouri Edison Company

Tom Boy Food Store

"YOU RATE MORE AT A TOM BOY STORE"

Louisiana

Missouri

IN. 2300.1

Compliments Of

Ray Behrens

Authorized

Ford

Sales and Service

Louisiana

Missouri

Q. R. Johnson

Watches

Diamonds

Jewelry

Step In And Look Around

Phone 69

Louisiana

Missouri

Clark Theatre

BON VOYAGE!

Your Home-Town Newspaper

The Louisiana Press-Journal

Joins this community in wishing you the best
of everything in your journey through life.

May we have the privilege of continuing to keep your friends
informed of any newsworthy event that comes your way in
the years ahead?

Compliments Of

Logan's Fine Foods

Louisiana, Missouri

Louisiana, Missouri

Phone 98 - 99

Quality Groceries

Service Satisfaction

A Clean Store

A Clean Stock

Prompt Service

A Square Deal

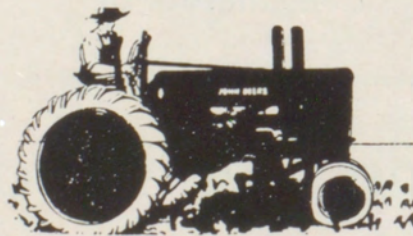
Dillender Grocery Co.

Compliments Of

a Friend

With Best Wishes to The
Graduating Class

Farm Supply Company



Firestone Tires Porter Paints Agrico Fertilizer

John Deere Sales and Service

Third and Alabama

Phone 1055

Louisiana, Missouri

VanStrien Bros. Service Station

8th Georgia

Greasing-Oil-Gas-Tires

Batteries-Accessories

Phone 60

Louisiana, Missouri

Good Health and Success to all Graduates

Wahl Hotel & Cafe

Louisiana, Missouri

Louisiana Lumber Co.

Reasonable Reliable Responsible

4th and Tennessee

Phone: 174

Louisiana, Missouri

M. F. A. Central Co-op.



Gas - Oils - Greases

Meats - Groceries

All Farm

Products and
Supplies

Phone 274

Louisiana, Missouri

NEW HOME

JENKINS' SEWING CENTER

Repair Parts and Servicing

Phone 333

419 Georgia

Louisiana

Missouri

Compliments Of

KING'S MACHINE SHOP

Your Patronage

Appreciated

114 or 5th Street

SCHAPER CHEVEOLET COMPANY

Chevrolet Sales
And Service

Kermit Schaper
Proprietor

Phone 205

Louisiana

Missouri



GLENN VALLENTINE, INCORPORATED

410-12 Georgia Street

Louisiana

Telephone 880

Missouri



We Service All Makes of Cars

Dodge Passenger Cars

Plymouth Passenger Cars

Dodge Job Rated Trucks

WEISS' DRESS SHOP

Ladies' Ready - to - Wear

321 Georgia Street

Louisiana, Missouri

Louisiana

Missouri

KRITZ CAFE

Plate Lunches

Ice Cream, Soft Drinks

Coffee - Sandwiches

Lily Kritz, Proprietor

KIENTZLES SHOE STORE

Shoes-Hosiery-Bags-Costume Jewelry

Louisiana, Missouri

Compliments Of

MODEL CLEANERS

Phone 718

Louisiana

Missouri

Compliments Of

CONRAD'S MARKET

Louisiana, Missouri

In Louisiana, Missouri

It Is

KROGER

JONES CLOTHING COMPANY

Clothing, Hats, Furnishings and Shoes

313 Georgia Street

Louisiana

Missouri

Phone 46

ARCADE CLOTHING STORE

Men's and Boys' Clothing, Furnishings and Shoes

317 Georgia Street

Louisiana

Missouri

LINDSAY BROTHERS SERVICE STATION

Gas - Oil - Auto - Accessories

Tires - Batteries - Lubrication

Phone 84

700 Frankford Road

Louisiana, Missouri

BERRY'S FOOD CENTER

Grade "A" Meat Always

Groceries - Fresh Fruits

And

Vegetables

Phone 89

Louisiana, Missouri

FROZEN GOLD
Cream of Cream
Ice Cream

FROZEN GOLD ICE CREAM COMPANY

VERDIER PONTIAC COMPANY

Pontiac



Louisiana

Missouri

Congratulations and Best Wishes

To The L. H. S. Seniors of
1948

A FRIEND

ROSE SHEET METAL COMPANY

Warm Air Heating - Modern Appliances

Rural Gas

For Farm Homes

Established 1900

Phone 653

Louisiana, Missouri

MUTT AND JEFF

Frigidaire Appliances

Good Year Tires

Sales and Service

HEALTH-WAY DAIRY COMPANY

Pasteurized Dairy Products

Homogenized Milk Vitamin D Added

Ice Cream

Phone 29

115 North Fifth Street

Louisiana, Missouri

SHIELDS-TROWER MOTOR COMPANY

Diamond-T Trucks

D-X Petroleum Products

Willys-Overland

Jeeps, Trucks, and Cars

Phone 455

Sixth and Georgia

CUNNINGHAM AND TILLY GARAGE

General Repair Work on all Make Cars

Body and Fender Work, Welding

Radiator Repairing

United Motors Service

Phone 248

614 Georgia Street

Louisiana, Missouri

Louisiana

Missouri

Best Wishes to the Graduating
Class of the Louisiana
High School
From
AB'S CAFE

WM. B. AND W. P. HALEY

Merchantile Bank Building

All Forms of Insurance

Compliments Of

WORTHWHILE BAKERY

Geo. A. Spanos, Manager

Phone 768

Louisiana

Missouri

GREEN'S BOOK STORE

School Supplies and Books

Louisiana, Missouri

WHITE AND WAGNER SHELL SERVICE

Gas-Oil-Lubrication
General Auto Repair

Phone 16

Corner Third and Mansion

Louisiana, Missouri

BOB PRICE

PHILLIPS "66" SERVICE

Washing-Greasing-Polishing

Tire Repairing-Trailer Parking

Auto Accessories

Compliments Of

HALEY MORTUARY

Phone 209

110 South Main Street

Louisiana

Missouri

Phone 349

Louisiana, Missouri



"Buy and Pay The Modern Way"

Compliments Of
LOUISIANA FURNITURE COMPANY
Home of Good Furniture
Phone 57

LOUISIANA PHARMACY
Drugs Prescriptions Sundries
Phone 15
323 Georgia Street

O'DONNELL'S PHARMACY
Fountain Service - Drugs

Best Wishes From
A FRIEND
TO THE SENIOR CLASS

SWISHER SERVICE STATION

H. C. Swisher, Proprietor

Standard Oil Products

Tire Repairing
Expert Greasing

Day and Night
Service

Phone 53

Louisiana

Missouri

BRANHAM'S CAFE

Short Orders - Sandwiches

Groceries

"Where the Gang Hangs Out"

North Third Street

Louisiana, Missouri

CHAMP CLARK SERVICE STATION

Mr. and Mrs. Thos. L. Powers, Proprietors

Cafe and Tourist Court

Phone 163

Louisiana

Missouri

Louisiana

Missouri

S. E. JEFFRIES

McCormick-Deering
Tractors

Farm Machinery Headquarters
Trucks

Refrigeration

Highway 54

Phone 62



Compliments Of

CITY BOTTLING COMPANY

Bottlers Of

Vess Cola
Bubble Up

Whistle
New Grape

Vess Beverage

Louisiana

Missouri

Visit Our Record Department

You will find a large selection of Popular Classic and
Childrens By-Decca-Victor-Columbia-Capital-Majestic
Mercury.

Repair Service on all Makes Radios and Phono Combinations

KIRTZ RADIO SALES AND SERVICE

Phone 681

VELMA'S BEAUTY SHOP

We are now fully equipped and qualified to give
you that perfect permanent for your type and texture
hair, at an attractive price -- Be sure and call early
for your appointment. Will Work Evenings.

Mrs. Leola Lander, Manager and Operator

Dorothy Hutchison, Assistant Operator

Phone 121

WHITE STAR LAUNDRY

Louisiana

Missouri

BROWN'S PHARMACY

Prescriptions

418 Georgia Street

Louisiana

Missouri

Compliments Of

LOUISIANA SWEET SHOP

Home-Made Candies

519 Georgia Street

Compliments Of

GOODIN AND SON BARBER SHOP

Phone 126

Louisiana

Missouri

YOUNGS' VARIETY STORE

Wallpaper, Paints

Louisiana

Missouri

Compliments Of

SIZEMORE VARIETY

VARIETY

BOOSTERS

LOUISIANA MARBLE AND GRANITE COMPANY

NICKLES PHARMACY

HELEN'S BEAUTY SHOP

V. M. PITNEY, INSURANCE

ILA'S BEAUTY SHOP

MILLERS' PLUMBING SHOP

MISSOURI DRY GOODS STORE

LOUISIANA SHOE REPAIR

DR. E. A. CUNNINGHAM

COOPER'S SHOE STORE

FRIER HARDWARE COMPANY

GLENN CASH-WHOLESALE COMPANY

D. O. WEAVER

SHUFORD BROTHERS

Electric Shop and General Wiring

Phone 1079

115 South Third Street

Louisiana

Missouri

WESTERN AUTO ASSOCIATE STORE

"Everything For The Automobile"

Wm. F. Rottman, Owner

Telephone 17

318 Georgia Street

Louisiana, Missouri

Glen Vallentine

Herb Bennie

Come To Us For Your Money Needs

Repayment Geared To Your Income

Confidential

LOUISIANA LOAN AND FINANCE COMPANY

Phone 880

412 Georgia Street

ABEL BROTHERS STATION

Daylite to Midnite

500 Georgia

Louisiana, Missouri

Road Service

Phone 986



