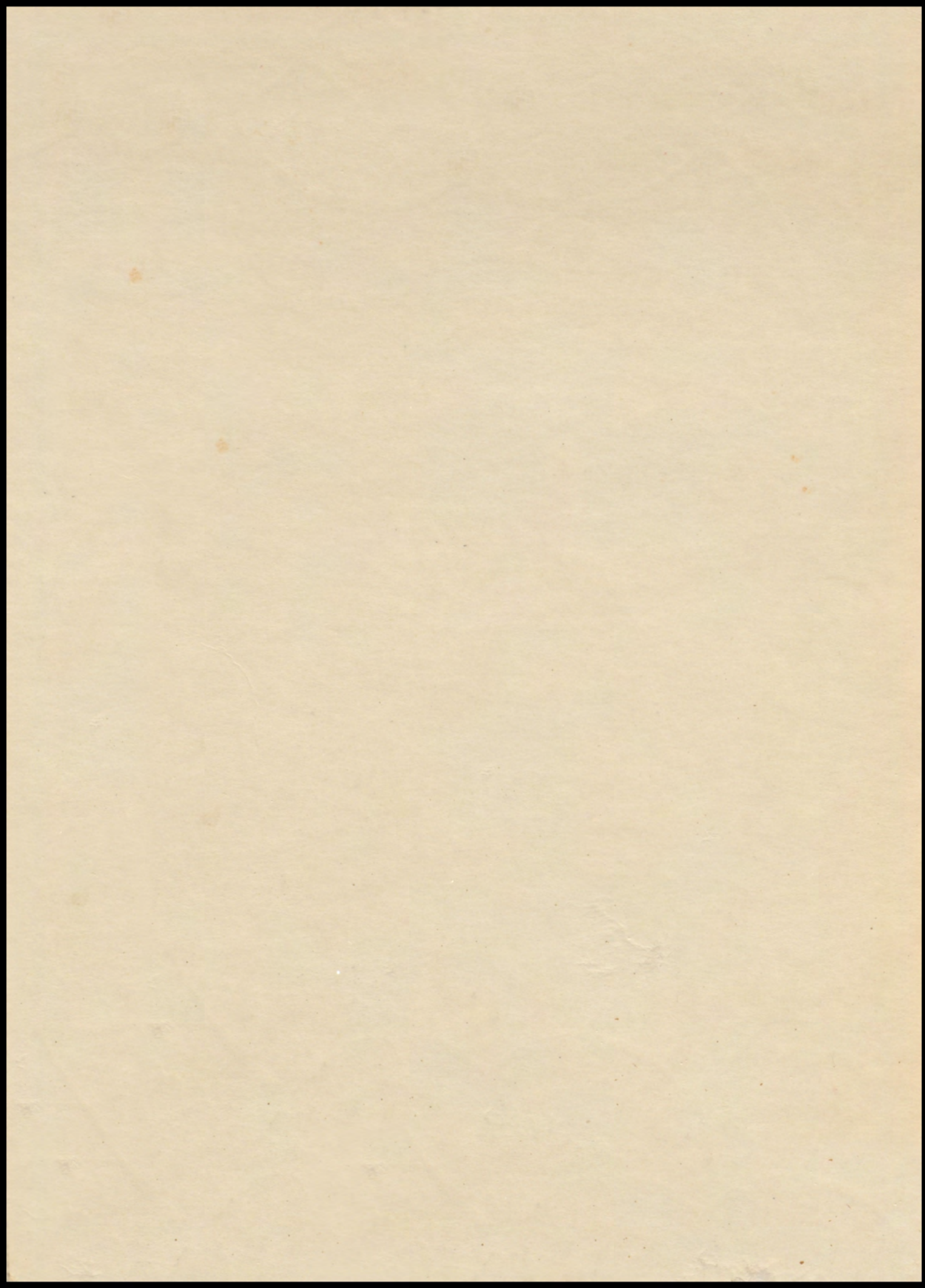
A decorative red border with a central star and the text "The 1947" and "ALAMO". The border is composed of a thick red line that forms a large, rounded shape, with smaller, more intricate flourishes at the top and bottom. A small red star is positioned at the top center of the border. The text "The 1947" is written in a cursive font, and "ALAMO" is written in a bold, sans-serif font.

The 1947

ALAMO





EX LIBRIS



The 1947

A L A M O



LOUISIANA HIGH SCHOOL

Louisiana, Missouri

DEDICATION

DEDICATED IN A MOST SINCERE MANNER TO ALL
ALUMNI OF THIS HIGH SCHOOL WHOSE ABILITY
AND KNOWLEDGE, WHICH THEY GARNERED
FROM THIS INSTITUTION, HAS CARRIED THEM
TO A SUCCESSFUL AND WORTHWHILE LIFE.



Seated—Eric A. Cunningham, J. Lyndon Garner, Russell Armentrout.
Standing—Charles Nord, P. L. Marsh, F. E. Jenkins.

SCHOOL BOARD

President J. Lyndon Garner

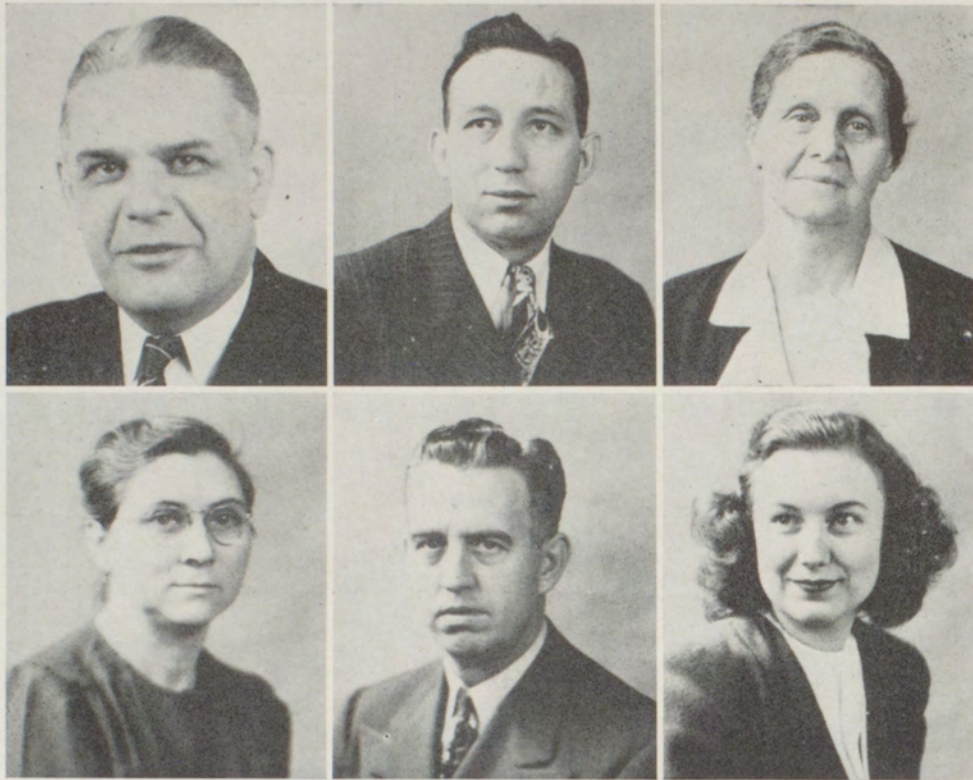
Vice-President Dr. Eric A. Cunningham

Secretary Russell Armentrout

Treasurer F. E. Jenkins

P. L. Marsh

Charles Nord



Top—M. M. Pettigrew, Galen Lankford, Grace Berry.
 Bottom—Lois Hastings, Paul Wade, Mildred Burns.

FACULTY

M. M. PETTIGREW
Superintendent

LOIS HASTINGS
Commerce

GALEN E. LANKFORD
Principal
Mathematics

PAUL WADE
Vocational Agriculture

GRACE M. BERRY
Social Science
Latin

MILDRED BURNS
Music



Top—Mae Hofrichter, Eugene Grant, Martha Rudasill.
 Bottom—Jane Forgy, Alice Blackmore.

FACULTY

MAE HOFRIEHTER

*Social Science
 Physical Education*

EUGENE GRANT

*Science
 Coach*

MARTHA RUDASILL

Home Economics

JANE FORGY

English

ALICE BLACKMORE

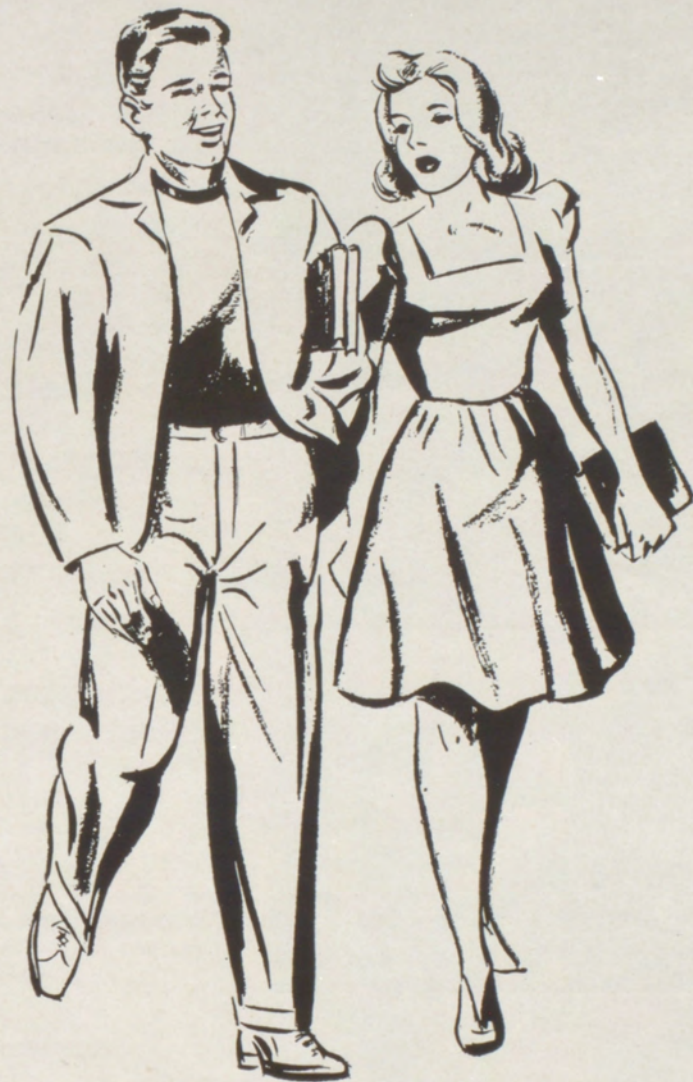
Secretary to Superintendent



First row—Beverly Jordan, Peggie Reneau, Sarah Reed, Sue Gibson.
Second row—Betty Duncan, Carol Cunningham, Edele Kooreman, Jean Murphy.
Third row—Milburn Lame, Merrill Henderson, Conne Sandven, Miss Berry, Newt Bryson, Roger Jones, Lewis Todd.

ALAMO STAFF

Miss Grace M. Berry	Sponsor
Newt Bryson	Editor
Conne Sandven	Assistant Editor
Beverly Jordan	Business Manager
Lewis Todd	Assistant Manager
Edele Kooreman	Senior Editor
Sue Gibson	Junior Editor
Roger Jones	Sophomore Editor
Carol Cunningham	Freshman Editor
Sarah Reed	Music Editor
Peggie Reneau	Art Editor
Merrill Henderson	Athletic Editor
Jean Murphy	Activity Editor
Milburn Lame	Treasurer
Betty Duncan	Secretary



C L A S S E S

SENIORS



ANDERSON, ELVA
Glee Club.

BAKER, MARY
Glee Club.



BARBER, H. S.
Football; Basketball; G. I.

BARNES, JUNIOR
Football, Senior Class Vice-President; Junior Play; Operetta.



BEHRINGER, GENE
Basketball; Track; Glee Club; "L" Club.

BERRY, FRANCES
Homecoming Queen Attendant, '43; Operetta; Junior Play; Glee Club.



BIBB, JOHN
F. F. A.

BRYSON, NEWT
Student Body President; Football; Basketball; Sophomore Citizenship Award.

SENIORS

CHARLESWORTH, IRIS

CONBOY, JOAN

Junior Play; Operetta; Freshman Secretary-Treasurer; Office Assistant.



CONRAD, BOB

Football; Basketball; F. F. A. President; Student Body Vice-President.



DILLENDER, BETTE

Twirler; Junior Play; Operetta; Drum and Bugle Corps.

DUNCAN, BETTY

Junior Play; Operetta; *Alamo* Staff; Senior Secretary-Treasurer.



EDWARDS, JEAN

Office Assistant; Home Ec Club.

FRANKE, ANNA MAE

Home Ec Club; Glee Club.



GARNER, NINA

Office Assistant.

SENIORS



HALLOWS, JAMES
Football; F. F. A.

HENRY, MARVIN
Junior Play; Operetta; Basketball;
"L" Club.



HENDERSON, MERRILL
Freshman and Senior President;
Junior Play; Basketball; Football.

HOUCHINS, EVELYN
Band; Glee Club; Drum and Bugle
Corps.



HUNTER, BESSIE
Homecoming Queen; Office As-
sistant; Home Ec Club; Band.

JORDAN, BEVERLY
D. A. R. Award; Cheerleader;
Junior Vice-President; Homecom-
ing Queen Attendant, '44.



KOOREMAN, EDELE
Junior Play; Twirler; *Alamo*
Queen; Junior Secretary-Treas-
urer.

LAME, MILBURN
Alamo Staff; D. A. R. History
Award; Glee Club.

SENIORS

LOVE, CHESTER

Glee Club; Operetta.



MILLER, WALLACE

Alamo King; Band; Operetta;
Cheerleader.



MITCHELL, WILSON

G. I.

MIXER, LOIS

Glee Club.



MOORE, DOLORES

Band; Glee Club.

MURPHY, JEAN

Junior Class President; Junior
Play; Glee Club; *Alamo* Staff.



NEUMANN, KARL

Glee Club; Band.

PAINTER, JACK

Glee Club; Softball.

SENIORS



PHILLIPS, JEANNIE
Twirler; Glee Club.

PRITCHETT, NANCY LOU
Glee Club.



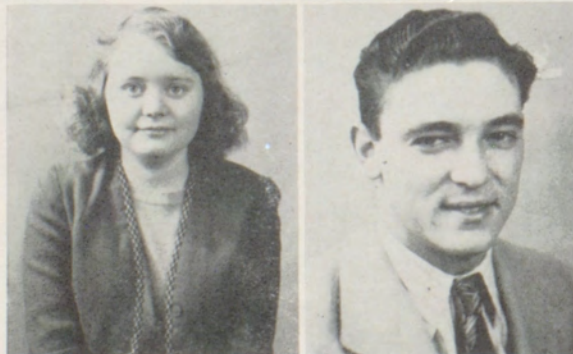
REED, SARAH
Drum Majorette; Operetta Accompanist; Glee Club Accompanist; *Alamo* Staff.

RENEAU, PEGGIE
Homecoming Queen Attendant, '46; Student Body Secretary-Treasurer; *Alamo* Staff.



SILVEY, BESSIE
Glee Club.

TARRANTS, PEGGY
Glee Club.



TUCKER, BETTY
Glee Club.

VANHOOSER, KENNETH
Football; G. I.

SENIORS

WAMSLEY, MARY FRANCES

Glee Club; Drum and Bugle Corps;
Band; Home Ec Club President.



WATTS, RUBY

Band; Office Assistant.



WILLIAMS, GEORGIA

Glee Club.

SENIOR CLASS

The Senior Class of 1947 enjoyed a very happy and successful year. There are forty-three members in this the seventy-second graduating class of L. H. S. This class is about average in number as compared with other years.

Newt Bryson was elected the president of the student body, Bob Conrad the vice-president and Peggie Reneau the secretary-treasurer. These officers form a portion of the Student Council which has been active in sponsoring school dances at various times throughout the year.

Merrill Henderson was elected the class president, Junior Barnes the vice-president and Betty Duncan the secretary-treasurer.

The senior party was one of the highlights of the year with most of the class in attendance. The poses struck by Miss Berry and Mr. Lankford during a certain game will not soon be forgotten.

Beverly Jordan received the D. A. R. Citizenship Award by vote of the senior class. She will compete with other students from Missouri for a pilgrimage to Washington, D. C. Beverly also represents the class among the cheerleaders.

SENIOR CLASS (*Continued*)

Five senior boys played on the basketball team—Bob Conrad, Newt Bryson, Merrill Henderson, Gene Behringer and Marvin Henry. Also on the football squad were Bob Conrad, Newt Bryson, Junior Barnes, Merrill Henderson, Marvin Henry and James Hallows.

The Homecoming Queen was Bessie Jane Hunter and the senior attendant to the queen was Peggie Reneau, escorted by Gene Behringer.

There were a credible number of seniors in band this year. They were Junior Barnes, Wallace Miller, Betty Duncan, Bessie Hunter, Evelyn Houchins, Dolores Moore, Billy Shoemaker, Mary Frances Wamsley, Bob Conrad and Ruby Watts. Bette Dillender, Jeannie Phillips, Peggie Reneau and Edele Kooreman were twirlers.

Miss Berry, the class sponsor, became ill just before Christmas and was forced to be away from school for a while. We were all glad when she was again able to return to her regular classes.

The *Alamo* Staff of this year is composed largely of seniors, nine in number. This activity is also sponsored by Miss Berry. Members of the staff include Newt Bryson, editor, Beverly Jordan, business manager, Merrill Henderson, athletic editor, Jean Murphy, activity editor, Edele Kooreman, senior editor, Milburn Lane, treasurer, Peggie Reneau, art editor, Sarah Jane Reed, music editor, and Betty Duncan, secretary.

Several seniors are included in the cast of the operetta, produced by Mrs. Burns, the music instructor. The senior class is well represented by boys and girls in the glee clubs. Sarah Jane Reed has served as accompanist for the glee clubs along with being a majorette in the Drum and Bugle Corps.

Bob Conrad was elected president of the F. F. A. and received the agriculture award. A group of senior boys are included in the judging team of the agriculture department.

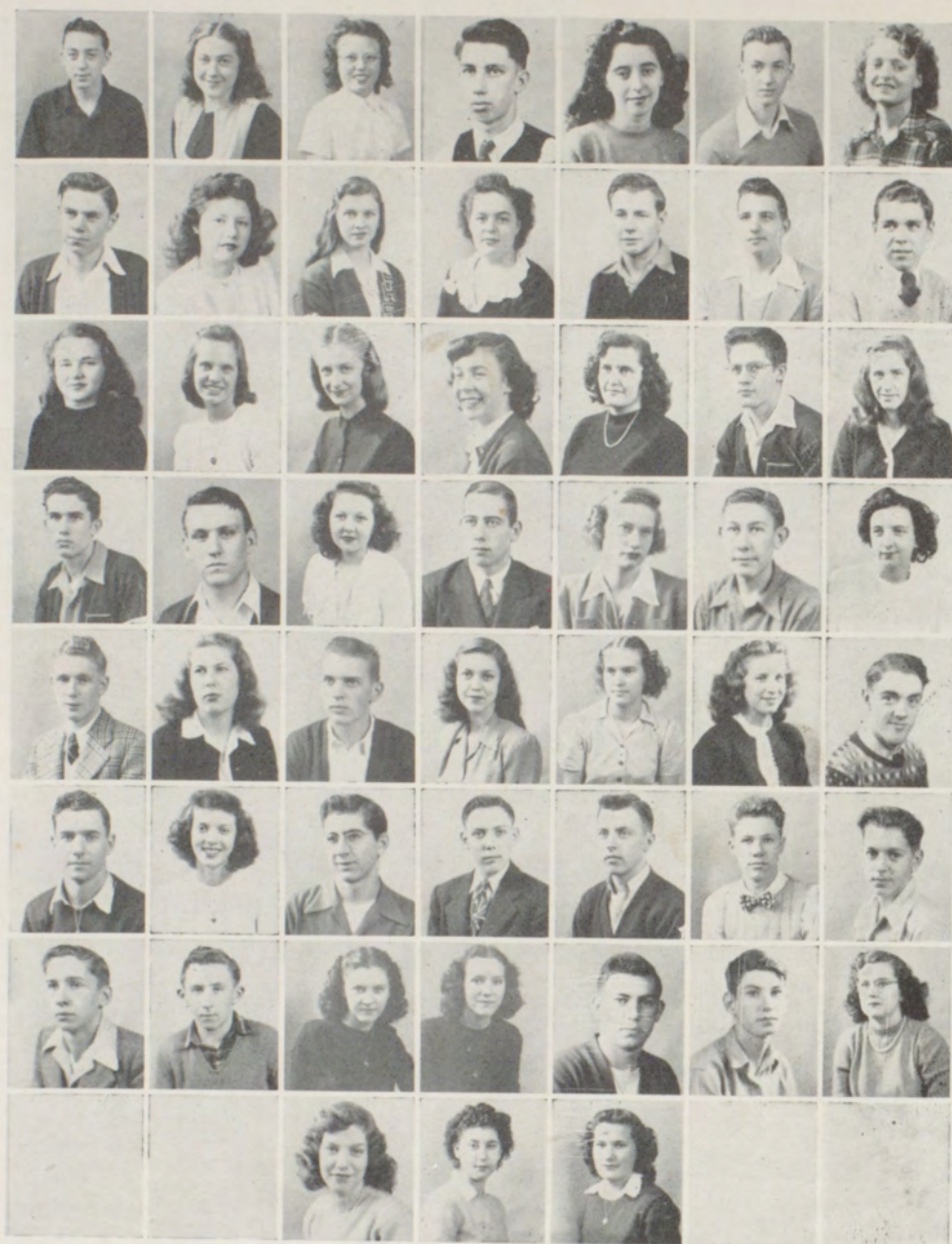
The current honor of reigning as *Alamo* King and Queen went to Wallace Miller and Edele Kooreman, both seniors.

Four members of the class are entered in the District Music Festival at Kirksville (Mo.) this year. They are Junior Barnes, baritone solo, Sarah Jane Reed, piano solo, Evelyn Houchins, snare drum solo, and Betty Duncan, clarinet solo.

The senior play is to be held a little earlier than usual, on May 9. Baccalaureate Services are to be held on Sunday, May 18, with the Rev. Hauser Winter of the Methodist Church as speaker. The Commencement Exercises are to be held on May 23. Dr. W. H. McDonald, President of the Culver-Stockton College at Canton (Mo.) will be the guest speaker.

A large number of senior students are looking forward to attending college and all of us hope for a successful future in the years to come.





JUNIORS

Bill Adkison, Roxanna Adkison, Lenora Baker, Bob Betts, Virginia Bolomey, John Bray, Sue Brown, Bob Burbridge, Doris Burbridge, Dorothy Chapius, Virginia Corum, Wendell Culwell, Dave Dean, Gordon Dudley, Bonnie Evick, Sue Gibson, Imogene Griffith, Marianne Guengerich, Marian Hallows, R. D. Hamlett, Shirley Hirsch, Jack Ince, Francis Johnson, Dorothy Kuna, Warren Kunz, Mildred McKenzie, Charles McLeod, Arleta Martin, A. R. Myers, Pauline Muff, Charles Nord, Betty Parsons, Peggy Pederson, Ethel Penrod, James Pritchett, Arroll Quaite, Florence Reed, Jack Reed, Bill Richard, Danney Robinson, Conne Sandven, Bill Shive, Bill Shoemaker, George Sidwell, Marilyn Stout, Mary Lou Stout, Lewis Todd, Forest Turner, Jean Verdier, Doris Wahl, Catherine Walker, Dorothy Widaman.

JUNIOR CLASS

OFFICERS: President, Lewis Todd; Vice-President, Danney Robinson; Secretary-Treasurer, Conne Sandven; Sponsor, Miss Martha Rudasill.

The Junior Class, at the beginning of the 1946-1947 school year, had an enrollment of forty-seven, but by the end of the first semester this number increased to a total of fifty-one.

The juniors have stood up very well with the other classes in furnishing participants for the extra-curricular activities here in L. H. S.

We added nine juniors to the band as well as the band majorette and three twirlers. The Drum and Bugle Corps has four of our girls in its organization.

Although the boys are in the minority in the Junior Class, they managed to put in an all male executive staff.

A number of juniors have participated in school dramatics and the boys and girls who sing will contribute their share in making the operetta, "Rio Rico," which is to be held March 28, a big success. There are twenty-one juniors in the glee clubs, twelve girls and nine boys.

The annual junior play, "Going Places," was given on December 13 under the able direction of Mrs. Margaret White, the English instructor during the first semester.

JUNIOR PLAY CAST: Mrs. Kimball, Pauline Muff; Gladys Miller, Marianne Guengerich; Shirley Kimball, Imogene Griffith; Dr. Kimball, Jack Reed; Jeff Sterling, Conne Sandven; Rosemary Lee, Bonnie Evick; Cuthbert Lee, Dave Dean; Prof. Melville Stubbs, James Pritchett; Mrs. Stubbs, Virginia Bolomey; "Chuck" Malloy, Bill Richard; Aunt Kate Malloy, Sue Gibson; Florence Ward, Doris Wahl.

The success of this play was due in no small measure to the excellent stage crew.

This year we again had football and twelve junior boys were on the squad. Ten of these boys lettered and this brought the total of junior boys in the "L" Club to ten. Some of these boys had already received membership in this outstanding athletic club by lettering in track or in basketball during the past two years.

The Football Homecoming was held October 18 and Miss Florence Reed had the honor of being the junior class attendant, escorted by Bill Richard.

Then came basketball season and five of our boys went out to try their skill at that sport. Only one boy, Danney Robinson, has lettered in basketball up until now and this will mark his third year.

Of the five fine cheerleaders, one from our class, Shirley Hirsch, has represented us among the cheerleaders for two years now.

The annual F. F. A. Barnwarming was given by the agriculture boys on October 9 and a queen and four attendants were chosen to reign over this affair. Miss Imogene Griffith had the pleasure of being the junior class attendant.

Three members of the junior class were appointed to the *Alamo* Staff. They were Conne Sandven, assistant editor-in-chief, Lewis Todd, assistant business manager, and Sue Gibson, junior editor.

For the first time in many years a bi-monthly newspaper, *L. H. S. Highlights*, is being published. A newspaper staff was organized by Mrs. Margaret White from students in the junior class, and with the splendid assistance of Miss Hastings and her Commercial Department they have been able to meet all of the "Thursday deadlines."

We are looking forward to our party and picnic and all of the school dances coming up in the next few months. We joyfully anticipate our Junior Prom and the Senior Farewell which are to be held May 16 and May 23, respectively.



Gene Allison, Rose Mary Anderson, Carol Armentrout, Bobby Bail, Mary Ellen Bass, Ralph Bass, Annette Bland, Jane Ann Brown, Joe Henry Burch, Paula Bunn, Etta Burns, Charlotte Campbell, Edwards Carr, Malcolm Carroll, Sylvia Cozad, Edward Creamer, Beverly DeWeese, Virginia Dillender, Bennie Griffith, Frank Hallows, Ralph Hammack, Wanda Henry, Charlotte Hunter, Roger Jones, Billy Jordan, Pauline Kanan, Tommy King, Marilyn LaBar, Ruby Lonergan, George Lucas, Lowell McCallister, Gertrude McCleery, Mary Louise McKenzie, Dorothy Mitchell, Shirley Mozier, Junior Newman, Harvey Niffen, Kitty Page, Bonnie Painter, Norma Jean Pierce, Jerry Powell, Sutro Pritchett, Nancy Ralph, Teddy Roberts, Charles Rose, Archie Ross, Edna Pearl Rubemeyer, Ben Ruffin, Bill Sandven, Imogene Shields, Betty Lou Shuford, Matilda Spanos, Joyce Steers, Oscar Steinly, Richard Stephens, Jackie Tarrants, Bill Guy Todd, Rachel Vanhooser, Evelyn Waddell, Keith Wescott, Helen Williams.

Sophomore Class

At the beginning of the school year, sixty students were enrolled in the sophomore class. Our present enrollment is sixty-one.

At the first class meeting of the year it was announced that Mrs. H. R. Burns, the music instructor, would be our sponsor for the year. Class officers were also elected at the meeting. They were as follows: Charles Rose, president; Harvey Niffen, vice-president; and Annette Bland, secretary-treasurer.

The sophomores have taken an active part in all school activities. Seven sophomore boys went out for football. Ralph Hammack, Roger Jones, Billy Jordan, Junior Newman, and Keith Wescott received letters in this sport at the football banquet. At the annual homecoming game, Annette Bland was the sophomore attendant to the football queen. She was escorted by Bennie Griffith. Many of the sophomore boys were also active in basketball.

Nine of the musically minded boys and girls play in the school band, and there are twenty-three who sing in the glee clubs. Nine sophomore girls are in the Drum and Bugle Corps.

At the annual barnwarming, which is given by the F. F. A. Boys, Virginia Dillender was the attendant to the barnwarming queen.

Harvey Niffen was chosen the outstanding citizen of the sophomore class by vote of the student body and faculty. As a reward for being selected, he will be given a trip to Jefferson City sponsored by the Century Club on April 11.



Marjorie Anderson, Merrill Beck, John Benning, Carroll Brimer, James Brown, Beverly Brown, Sue Burbridge, Paul Burks, Tommie Burks, Lillian Burnett, Leon Chapius, Jerry Charlesworth, Harriet Colbert, Howard Corum, Lorine Cozad, Betty Jo Creamer, John Crisan, Carol Cunningham, Anita Dean, Aldro Dewey, John Dillender, Claudean Eddington, Harold Elliott, Harry Elliott, Martha Elliot, Nancy Flaherty, Mary Frances Fountain, Junior Fritz, Peggy Dell Fry, Peggy Garner, Jerry Goodin, Jimmy Guy Griffith, Bill Guengerich, Betty Jo Haff, Eulalie Haley, Margaret Harrison, Lou Belle Higginbotham, Bobby Ince, Connie Johnson, Donna Kilby, Jimmy Lonergan, Mackey Dee Love, Okey McCormick, Marilyn McIlroy, Kenny Marsh, Joyce Mills, Gene Murry, Lewis Ogle, Patty Parsons, Ruth Ann Paschal, Helen Pederson, Joe Penrod, Joan Pritchett, Bill Reed, Cleo Rubemeyer, Betty Ruffin, Betty Shipley, Doris Jayne Smith, Charles Sparks, Meade Spears, Anthony Stark, Charles Stephens, Herman Thomas, George Traw, Donna Trower, Sarah Tucker, Jane Turnbull, Mary Rose Umfleet, Bettie Verdier, Billy White, Joan Wurtz.

Freshman Class

The Freshman Class of 1946-1947 has the distinction of being the largest class in Louisiana High School. There are seventy-one members, a large number participating in band, Drum and Bugle Corps, and girls' and boys' glee clubs. A large number of freshman boys took part in sports. Harry Elliott and Gene Murry lettered in football.

We are sponsored by Miss Mae Hofrichter. This is Miss Hofrichter's first year at L. H. S. and she has proved herself very efficient and is one of the most popular teachers in the school.

The class officers are: President, John Crisan; Vice-President, Bill Guengerich; Secretary-Treasurer, Beverly Brown. All of our officers have been very efficient and are well liked.

The class party, a Halloween party, was held October 30. It was unanimously considered one of the most successful events of the year.

We are proud of our popular members, three receiving special honors. Donna Kilby was elected annual Barnwarming Queen, with Peggy Dell Fry as freshman attendant. Peggy Dell was also attendant to the 1946 Football Queen. Mackey Dee Love was her escort.

We have enjoyed being freshman, but we are looking forward to the time when we can shed the costume of the "Emerald Isle" for a more pleasing color.





F E A T U R E S



Left to right—Virginia Dillender, Shirley Hirsch, Charlotte Hunter, Beverly Jordan, Charlotte Campbell.

CHEERLEADERS

Whenever and wherever the Bulldogs appeared on the basketball court or the football field this year, five girls clad in red and white led their schoolmates in an ovation of yells which rang in the ears of every spectator who had the slightest sense of hearing. Through their vitality, incredible lung power and immeasurable enthusiasm, the Bulldogs were inspired to many an athletic victory. Not only were they a vital factor in nurturing the spark of determination which carried the Red and White athletes through a successful football season and to an even better record in basketball, but their showmanship during the "time-outs" and between quarters captured the attention of the entire crowd. Never did they say quits in any contest. But rather the cheers became more resonant when the going was hardest. When their team was triumphant over their opponents, they shared the joys and thrills that go with it. In losing, their spirits were dampened, too, but not for long. Their job was to keep alive the zeal and fervor which characterizes all amateur sports events, and seldom did they fail their work.

When one begins to account for the success of the L. H. S. athletic squads this year, five good reasons can be found in the persons of Virginia Dillender, Shirley Hirsch, Charlotte Campbell, Beverly Jordan and Charlotte Hunter.



First row—Doris Wahl, Jean Verdier, Imogene Griffith, Marianne Guengerich, Virginia Bolomey, Shirley Hirsch. Second row—Doris Burbridge, Dorothy Kuna, Bonnie Evick, Sue Gibson, Dorothy Mitchell. Third row—Mrs. Forgy, Conne Sandven, Charles Nord, Dave Dean, Gordon Dudley, R. D. Hamlett.

NEWSPAPER

L. H. S. Highlights, the bi-monthly newspaper reporting the school's activities, was first published December 5, 1946. Written by members of the junior class and sponsored by Mrs. Margaret White, the paper soon had a long list of subscribers. Since the *Highlights* was the first paper of its kind to be published in the Louisiana High School, its circulation rapidly soared to over two hundred copies along with twenty exchanges.

Members of the staff are Virginia Bolomey, editor; Conne Sandven, managing editor; Dave Dean, business manager; R. D. Hamlett, Gordon Dudley, circulation; Charles Nord, sports editor; Dorothy Mitchell, art editor; Marianne Guengerich, Dorothy Kuna, copy editors; Doris Wahl, Sue Gibson, Jean Verdier, Imogene Griffith, Shirley Hirsch, reporters; Bonnie Evick, Imogene Griffith, feature writers; Doris Burbridge, exchange editor; Secretarial Practice Class, printers.

Upon the resignation of Mrs. White at the end of the first semester, the sponsorship was taken over by her successor, Mrs. Jane Forgy.

In addition to the permanent staff, contributions to the paper have been made by other members of the junior class and by students from the other three classes.

The *Highlights* gathered interest because it was a student body project. Much of its success can be attributed to the efforts of its writers and to the manner in which it is received every other Thursday of the school year.



First row—Betty Tucker, Lois Mixer, Junior Barnes, Bessie Silvey, Jean Edwards. Second row—Georgia Williams, Nina Garner, Jeannie Phillips, Betty Duncan. Third row—Mary Baker, Miss Hastings, Bessie Hunter.

Secretarial Practice Class

These eleven experienced (almost) typists and note takers make up the membership of the secretarial practice class. Our accomplishments have been outstanding. Betty Duncan now has for her goal the 140-word Gregg Shorthand Test; Nina Garner is working hard toward a successful 120-word test; and Bessie Hunter and Jean Edwards are determined to whip the 100-word test. The others are not far behind.

This year the commercial department acquired a new 91 Mimeograph. And has it paid for its room and board! You have realized this, if you have ever seen a girl or our only boy hurrying down the hall with black ink smeared from one ear to the other. Of course, you recognized them as members of the secretarial practice class employed in one of their duties. These duties include the making of football and basketball programs and handbills, play programs and tickets, and mimeographed tests for teachers. This was done along with our other class work which consists of typing, shorthand, dictation, transcription and other tasks similar to those carried on in an office.

One member of the class, Georgia Williams, submitted the winning name for the school paper, *L. H. S. Highlights*, which is printed bi-monthly by this department and, though the work is neither an easy nor a clean job, we have enjoyed being responsible for putting it to press.

All in all it has been a very successful, cooperative year for all concerned. We have learned to work together above all else which will mean much to us in the future.

NEWSPAPER

Newt Bryson Named Student Body Prexy

Election For Student Body
And Classes Held
Wednesday

Newt Bryson was elected student body president at Louisiana High School at the student body and class elections held Wednesday morning. Other student body officers are Bob Conrad, vice-president; and Peggy Renaud, secretary.

Bob Conrad Named Future Farmers Head

Louisiana Chapter Election Held
Wednesday At First School
Year Meeting

Bob Conrad was elected president of the Louisiana chapter of the Future Farmers of America at their annual meeting held Wednesday.

First Issue of LHS Highlights Put Out Thursday

Number 1 of volume 1 of the school paper LHS Highlights was issued Thursday, December 5. It was edited by the student body.

Ten F. F. A. Boys Buy Registered Hogs In Week

Future Farmers Plan Purebred
Hog Sale Here Last
Of October

Ten Louisiana FFA boys have purchased registered hogs during the past week for projects. Buying announced this morning. Buyers were John Lloyd, Malcolm...

Beverly Jordan Selected For LHS D.A.R. Contest

Will Compete For State
Honors and Trip To
Washington

Beverly Martin Jordan, daughter of Mr. and Mrs. Augustus Jordan, was named Louisiana High School's candidate for "Missouri's Pilgrim" contest. She will receive a certificate...

HARVEY NIFFEN SELECTED OUTSTANDING SOPHOMORE

Harvey Niffen, Jr., son of Mr. and Mrs. Harvey Niffen has been named the outstanding sophomore of Louisiana high school by the faculty and students of the school. It was announced yesterday. The Outstanding Sophomore Award is sponsored by the Century Club.

Donna Kilby Barnwarming Queen For FFA

Square Dancing Featured As
Main Event of Evening
Last Wednesday

The second annual F. F. A. Barnwarming was held in the high school gym last Wednesday evening. More than 150 people were in attendance. The gym was decorated...

LHS Junior Play, "Going Places," Will Be Presented December 13

The junior play, "Going Places," a 3-act comedy farce, will be presented in the high school auditorium on Friday evening, December 13, at eight o'clock, under the direction of...

JUNIOR CLASS HAS DANCE TONIGHT

The Junior class at the Louisiana High School is sponsoring a St. Patrick's Day "juke box" dance at 8:00 tonight. Members of the high school, 7th and 8th grades are invited.

LHS Music Department Presents Operetta "Rio Rico" This Week End

The high school music department will present the operetta, "Rio Rico" at the High School Auditorium, Friday and Saturday, March 28 and 29 at 8:00 p. m. The prologue of the operetta concerns itself with the Mole-cule. It was made by...

Sophomores Claim Nine of 22 On LHS Honor Roll

Twenty-two students of the Louisiana High School earned the coveted position on the School's Honor Roll for the second quarter just ended. Galen Lankford, principal, announced the list. The sophomores...



First row—Bill Richard, Bob Conrad, Bob Burbridge, John Crisan, Frank Hallows, Billy Todd, Gene Murry.
Second row—Bob Ince, Bill White, Howard Corum, Harold Elliott, Bennie Griffith, Edwards Carr, Sutro Pritchett, Joe Penrod.
Third row—Lewis Todd, Jimmy Guy Griffith, Gene Allison, Joe Henry Burch, George Sidwell, Malcolm Carroll.
Fourth row—Charles Sparks, Junior Fritz, Francis Johnson, Ben Ruffin, Bill Shoemaker, Leon Chapius, John Benning.
Fifth row—Aldro Dewey, Mackey Love, John Bibb, Wendell Culwell, George Traw, Ralph Bass.
Sixth row—Warren Kunz, Arroll Quaitte, James Hallows, Mr. Wade.

F. F. A. Barnwarming



Beverly Jordan, Imogene Griffith, Donna Kilby, Bob Conrad, Peggy Dell Fry, Virginia Dillender.

Vocational Agriculture Department

Vocational Agriculture is a course designed principally for farm boys attending high school. The purpose of the course is to improve the student's knowledge and experiences in the farming business. Vocational Agriculture is a four-year course with the following courses taught:

Agriculture I—Beef, Hogs, Sheep, Pasture and Legumes.

Agriculture II—Dairy, Poultry, Small Grain and Corn.

Agriculture III—Feeds and Feeding, Soil and Soil Conservation.

Agriculture IV—Farm Management, Livestock Sanitation and Diseases.

Farm shop is taught each year in all courses. Hog houses, feeders or anything that the students need on their home farms are constructed here at school. For those not working on the larger items of construction a choice of many smaller projects is offered to the students. Sheet metal, concrete, rope work, wood work, etc. are taught during the four years.

Every student is required to conduct a project program before receiving credit from his agriculture course. This past year twenty-seven students completed fifty-seven projects with a labor income of \$7,603.75. This is an all-time high as well as the average amount earned per student of \$296.43. For the present school year thirty-nine boys are conducting eighty-seven projects with fifteen different types of projects being carried on.

Purebred hogs have been stressed this year for two reasons. First, the prospects for profits seem quite good and, secondly, the Louisiana F. F. A. is planning to hold a purebred show and sale of hogs next October.

Beef cattle rank second place in importance here at Louisiana with nine boys feeding baby beeves for summer shows. Five boys have cow or heifer projects.

In community service the agriculture boys have culled several laying flocks, tested soil for lime, nitrogen, phosphorous, and potassium. They have also treated several hundred bushels of oats for the new blight disease and smut. Contour and terrace lines will be layed out for several farmers this spring.

The Future Farmers of America organization is the leadership training organization composed of all the students enrolled in Vocational Agriculture. The motto of the F. F. A. is the keynote of the organization and the agriculture department—"Learning to Do, Doing to Learn, Earning to Live, Living to Serve."

Officers are President Bob Conrad, Vice-President Lewis Todd, Secretary Bill Richard, Treasurer Wendell Culwell, Reporter Bob Burbridge and Sentinel Arroll Quaite.

Two big events highlighted the F. F. A. activity during the year. One was the State F. F. A. Camp which twelve boys attended from July 29 to August 4 on the Lake of the Ozarks. Twenty boys have signified that they wish to attend the camp this summer. The other event was the second annual Barnwarming held last October. Donna June Kilby, a freshman, was crowned queen by President Bob Conrad.

The Spanos Agriculture Award was shared by Lewis Todd and Bob Conrad. The award is given to the outstanding agriculture student with a cash prize of \$15.00.

Bob Conrad will be given the DeKalb Agriculture Award for the outstanding senior agriculture student. A plaque with name plates for engraving the winners' names for a ten-year period will be given the school. The senior student is to be chosen for leadership, scholarship, service to school, project program and offices held. The winner will be presented with a gold medal at the close of school.



TWIRLERS

Seated—Marilyn McIlroy, Betty Jane Akers, Patsy Cadwallader, Joyce May, Darlene Polard, Sue Burbridge. *Standing*—Shirley Hirsch, Bette Dillender, Peggie Reneau, Bonnie Evick, Edele Kooreman, Jeannie Phillips, Carol Cunningham, Imogene Griffith.



BAND MEMBERS

Pauline Muff, Florence Reed, Sue Gibson, Virginia Bolomey, Bill Sandven, Ethel Penrod, Dolores Moore, Wally Miller, Betty Duncan, Ruby Watts, Jerry Powell, Betty Jo Creamer, Dorothy Mitchell, Evelyn Houchins, Charles Nord, Beverly Brown, Bob Bail, Betty Shuford, Etta Burns, Jerry Goodin, Jane Brown, Dorothy Chapius, Mary Wamsley, Bessie Hunter, Kitty Page, Marianne Guengerich, Carroll Brimer, Teddy Roberts, Bill Guengerich, Malcolm Carroll, Conne Sandven, Junior Barnes, Mrs. Burns.

First row—Peggy Garner, Dorothy Widaman, Joyce Mills, Eulalie Haley, Rose Mary Anderson. *Second row*—Jean Verdier, Cleo Rubemeyer, Sutro Pritchett, Peggy Dell Fry, Mrs. Burns. *Third row*—Bob Conrad, Lorine Cozad, Bob Burbridge, Joe Henry Burch, Meade Spears, Charles Rose, Edwards Carr.

B A N D

An outstanding institution of Louisiana High School is the picturesque red and white uniformed band. The band, which has been active throughout the year under the able direction of Mrs. Mildred Burns, faithfully performed at football and basketball games. The band also appeared in numerous parades during the year and during the basketball tournament.

Despite a few squeaks from the clarinet section, a few blue notes from the trumpet section, and a few thuds of falling batons, there have been many favorable comments on the activities of the year-old, eighty-three piece band. The band was revived in 1945-46 after four years' lapse due to the lack of an instructor.

The band has been successfully led this year by a new majorette, Miss Imogene Griffith, a junior.

The thirteen twirlers with their shining batons and white satin costumes have added much interest and beauty to the band this year. They are Betty Jane Akers, Patsy Cadwallader, Joyce May, Darlene Pollard, Carol Cunningham, Bette Dillender, Bonnie Evick, Edele Kooreman, Jeannie Phillips, Peggie Reneau, Marilyn McIlroy, Shirley Hirsch, and Sue Burbridge.

The school was represented in the Music Festival at Kirksville on April 5 by six veteran members of the music department. They were Sarah Jane Reed, who played a piano solo; Conne Sandven, tuba solo; Evelyn Houchins, snare drum solo; Junior Barnes, baritone solo; Bill Guengerich, trombone solo; and Dolores Moore, voice. They competed with other students in the district for the honor of entering the state contest.

The band is unfortunate in losing seven members and four twirlers through graduation this year, but good material is available and an excellent band is in the offing for 1947-48.

Percussions
 Rose Mary Anderson
 Lorine Cozad
 Peggy Garner
 Sue Gibson
 Eulalie Haley
 Evelyn Houchins
 Joyce Mills
 Dorothy Mitchell
 Ethel Penrod
 Florence Reed
 Cleo Rubemeyer
 Dorothy Widaman
 Bill Sandven
 Jean Verdier
 Pauline Muff

Baritone
 Junior Barnes
 Marianne Guengerich

Bass Horn
 Teddy Roberts

Clarinets
 Virginia Bolomey
 Jane Brown
 Etta Burns
 Betty Creamer
 Betty Duncan
 Jerry Goodin
 Wally Miller
 Dolores Moore
 Jerry Powell
 Ruby Watts
 Betty Shuford

Saxophone
 Beverly Brown
 Peggy Dell Fry
 Charles Nord
 Billy Shoemaker
 Lowell McCallister

Mellophone
 Kitty Page

Trumpets
 Bob Bail
 John Benning
 Carroll Brimer
 Joe Henry Burch
 Edwards Carr
 Bob Conrad
 Dorothy Chapius
 Bessie Hunter
 Sutro Pritchett
 Charles Rose
 Mary Wamsley

Trombone
 Bob Burbridge
 Malcolm Carroll
 Bill Guengerich
 Conne Sandven



First row—Sarah Reed, Shirley Turner, Pat Campbell, Joan Pettigrew, Jane Johnson, Joanne Tipton, Mrs. Burns.

Second row—Imogene Shields, Carol Armentrout, Bettie Verdier, Virginia Dillender, Charlotte Campbell, Matilda Spanos, Joan Wurtz.

Third row—Charlotte Hunter, Wanda Henry, Annette Bland, Pauline Kanan, Jane Turnbull, Doris Jayne Smith.

Fourth row—Dorothy Kuna, Doris Burbridge, Marian Hallows, Imogene Griffith, Doris Wahl, Bessie Hunter, Dorothy Chapius, Mary F. Wamsley.

Drum and Bugle Corps

Attention! Left, right! Left, right! To the shrill call of the majorette's whistle, and at the signal of her baton, the red and white uniformed drum and bugle corps swings into action.

This is one of the oldest and most favorably known extra-curricular organizations in our high school, and its appearances in parades and ball games is anxiously anticipated by the patrons of the school.

The twenty-five members have been led for the past two years by their high-stepping majorette, Sarah Jane Reed. Under the direction of Mrs. Mildred Burns, the girls have shown a cooperative and enthusiastic spirit in practicing their maneuvers until they had gained perfection. The execution of their talents in the coronation of the Football Queen in October and in the basketball tournament proved that they still rank among the best of the community's performers.

A new feature this year was the addition of six small twirlers from the lower grades. Their red and white satin costumes added much beauty to this year's group.

Only the majorette will be lost through graduation this year so a group of veteran performers look forward to an unusually successful year in 1947-48.

OPERETTA

The operettas, which the music department has featured during the spring season for the past two years, have received such wide acclaim from the community that they are becoming a permanent fixture in the extra-curricular activities of the school. So much so, in fact, that both musicals have had to be presented two nights in order that everyone who wanted to might view the home talent in song and dance.

Skillfully staged and directed by Mrs. Mildred Burns, the music instructor, the operettas have gained success largely through her ability and guidance linked together with the cooperation and willingness of her students. Also to her accompanist, Sarah Jane Reed, goes a note of praise for her noteworthy performances in both operettas. Miss Hofriechter assisted Mrs. Burns in the stage direction this year and Dorothy Mitchell painted the scenery.

The title of this year's operetta was "Rio Rico," which was the name of a river on Cocos Island, the scene of the musical. Professor Amos Molecule, a famous inventor and teacher at Brighton College, leads an expedition to this island in an effort to discover gold through a gadget he invented. He is accompanied by students and associates of the college and also by a wealthy financier and his family. Together with some pirates, whom they find on the island, they supply plenty of songs and laughter for the audience. Perplexities develop, too, when the pirates threaten the lives of the professor and his friends for destroying their treasure. But all ends well when the pirates reveal themselves as a group of college boys playing a prank on their professor.

Cast

Mr. Davis, Radio Announcer.....	Karl Neumann
Pavola, Dancing Instructor.....	Joan Conboy
Sasino, Her Assistant.....	Bill Adkison
Lewis Morgan, Wealthy Financier.....	Bob Conrad
Jane Morgan, His Daughter.....	Carol Cunningham
Julia Morgan, Jane's Maiden Aunt.....	Betty Duncan
Professor Amos Molecule, Inventor.....	Wally Miller
Clara, a College Co-ed.....	Marilyn McIlroy
Nan, Another Co-ed.....	Doris Wahl
Pansy Borealis, the Superstitious Cook.....	Paula Bunn
Chef.....	Tommy King
Tubby Tompkins, the Campus Gourmet.....	Chester Love
Jack, a Senior at Brighton College.....	Junior Barnes
Bill, Radio Operator.....	Marvin Henry
The Black Spider, Leader of the Pirates.....	Conne Sandven
Ghost of Captain Strutt.....	Paul Burks
Duke.....	Charles Rose
One-Eye.....	Billy Jordan
Dead-Eye.....	Meade Spears
Spade-Beard.....	Kenny Marsh
Skittles.....	Bob Burbridge
Other Pirates—Malcolm Carroll, Bennie Griffith, Jimmy Guy Griffith, Harry Elliott, Sutro Pritchett, Teddy Roberts, Bill Sandven.	
Ghost Dancers—Joyce Steers, Mary Rose Umfleet, Doris Jayne Smith, Connie Johnson, Tommy Burks, Ruth Harrison, Harriet Colbert, Rosemary Anderson, Ruby Lonergan, Pauline Kanan.	
Belles of the Gay Nineties—Dorothy Kuna, Ruth Ann Paschal, Eulalie Haley, Sue Gibson, Betty Creamer, Dolores Moore, Joan Wurtz, Peggy Garner.	
Spanish Dancers—Florence Reed, Jeannie Phillips, Frances Berry, Edele Kooreman, Shirley Hirsch, Beverly Brown, Peggy Dell Fry, Mary Ellen Bass, Bonnie Evick, Imogene Griffith, Betty Parsons, Doris Burbridge.	



Rose Mary Anderson, Mary Baker, Mary Ellen Bass, Frances Berry, Virginia Bolomey, Beverly Brown, Paula Bunn, Doris Burbridge, Tommie Burks, Dorothy Chapius, Harriet Colbert, Joan Conboy, Betty Creamer, Carol Cunningham, Betty Duncan, Bonnie Evick, Mary Fountain, Peggy Dell Fry, Peggy Garner, Sue Gibson, Imogene Griffith, Marianne Guengerich, Betty Haff, Eulalie Haley, Marian Hallows, Ruth Harrison, Lou Higginbotham, Shirley Hirsch, Evelyn Houchins, Pauline Kanan, Donna Kilby, Edele Kooreman, Dorothy Kuna, Ruby Lonergan, Marilyn McIlroy, Mildred McKenzie, Arleta Martin, Lois Mixer, Dolores Moore, Pauline Muff, Betty Parsons, Ruth Ann Paschal, Ethel Penrod, Jeannie Phillips, Nancy Pritchett, Nancy Ralph, Florence Reed, Sarah Reed, Cleo Rubemeyer, Betty Ruffin, Betty Shipley, Doris Jayne Smith, Joyce Steers, Sarah Tucker, Mary Rose Umfleet, Rachel Vanhooser, Bettie Verdier, Doris Wahl, Joan Wurtz.

Girls' Glee Club

The Girls' Glee Club, under the direction of Mrs. Mildred Burns, consists of fifty-seven voices. This group has not only contributed to the school but to the community as well, by singing at social teas, banquets and P. T. A. programs.

The girls have shown much enthusiasm in participating in the high school operetta which has been given for the past two years. Last year's musical was entitled "The Belle of Bagdad" and this year's was "Rio Rico." Both met with equal success and the school's patrons are now beginning to look forward to these spring presentations.

A number of the girls will take part in the annual Music Festival at Kirksville on April 5 and are looking forward to much success.



Bill Adkison, Ralph Bass, Gene Behringer, John Bray, Carroll Brimer, Joe Henry Burch, Bob Burbridge, Paul Burks, Edwards Carr, Malcolm Carroll, Leon Chapius, Bob Conrad, John Dillender, Harry Elliott, John Fritz, Bennie Griffith, Jimmy Guy Griffith, Bill Guengerich, Marvin Henry, Jack Ince, Billy Jordan, Tommie King, Warren Kunz, Milburn Lane, James Lonergan, Chester Love, Kenny Marsh, Wallace Miller, Charles McLeod, Karl Neumann, Jack Painter, James Pritchett, Sutro Pritchett, Teddy Roberts, Danney Robinson, Charles Rose, Archie Ross, Bill Sandven, Meade Spears, Anthony Stark, Jack Tarrants, Billy Todd, Lewis Todd, Forest Turner.

Sarah Reed, accompanist; Mildred Burns, director.

Boys' Glee Club

The Boys' Glee Club has proved its capability by singing in other outside activities as well as in the high school operettas. They put their talents and abilities to work in making this year's operetta, "Rio Rico," a huge success, and the experience they have received from it will be valuable in future musicals. The boys are directed by Mrs. Burns and their piano accompanist is Sarah Reed.

Four of the boys have combined with members of the girls' glee club and have worked out a successful octet, which has performed at many social affairs, and they have the full approval of their many listeners.

A number of boys will also take part in the Music Festival on April 5 in Kirksville.



WALLACE MILLER
Alamo King



EDELE KOOREMAN

Alamo Queen



Peggie Reneau, Florence Reed, Bessie Hunter, Peggy Dell Fry, Annette Bland.

SPECIAL HONORS

Beverly Jordan



Harvey Niffen



Newt Bryson



Bill Shive



SPECIAL HONORS

Homecoming Queen

Bessie Hunter, lovely senior student, had the honor of reigning over the school's Homecoming Football Game this year. The beautiful coronation ceremonies took place between halves in the center of the gridiron, where the queen, smiling with emotion, was crowned by Newt Bryson, president of the student body.

The queen was flanked on each side by her attendants and their escorts. They were Peggie Reneau (senior) and Gene Behringer; Florence Reed (junior) and Bill Richard; Annette Bland (sophomore) and Bennie Griffith; Peggy Dell Fry (freshman) and Mackey Love.

D. A. R. Pilgrimage

Beverly Jordan was chosen candidate for the D. A. R. Pilgrimage by vote of the senior class and the faculty. She was elected on the basis of service, patriotism, leadership, dependability, and scholarship. She was given the opportunity of competing with other students in the state for a free trip to Washington, D. C.

Good Citizenship Pilgrimage

Harvey Niffen was given the honor of representing Louisiana High School in a pilgrimage to Jefferson City on April 11. He was one of many sophomores all over the state who were given a trip to the State capital by the Women's Federated Clubs. He was selected from the upper fifteen per cent of his class by the student body and the faculty.

Basketball Awards

Newt Bryson, lanky varsity center, and Bill Shive, promising forward on the "B" squad, were given monetary awards for having the best free-throw average on his respective team. The Bulldogs as a whole had an excellent record of making free-shots and the winners led their teammates by only a slight margin. The awards were sponsored by a local businessman who wishes to remain anonymous. The school is very grateful for the interest and support given its athletic teams by the townspeople.

A L U M N I

Two hundred and seventy-three members of the Alumni Association and friends were in attendance at the annual Alumni Banquet and dance which was held December 27, 1946 in the High School Auditorium.

The dinner was prepared by the High School P. T. A. members with girls from the junior class serving. Mrs. Gladys Bryson, president of the H. S. P. T. A. was in charge.

Dr. James E. Ligon, President of the Association was master of ceremonies and conducted the business meeting. Mr. J. M. Shull of the class of 1941 was elected president for the coming year. Other officers of this association for the current year are: Mr. Jack Lewellen, vice-president; Miss Lois Hastings, secretary; and Miss Grace Berry, treasurer.

The speaker for the evening was Mr. Roberto de la Rosa, a good-will ambassador from Mexico. Mr. de la Rosa has lived in St. Louis for several years and very entertainingly contrasted and compared life in America with the Mexican life. The speaker wore the colorful costume of his native country, carried a broad-brimmed sombrero and a guitar, on which he played accompaniment as he sang in Spanish with English translation.

Other features of the evening's program were contributed by talented L. H. S. Alumni: Miss Grace Jane Berry, Jimmy Lloyd Duncan, Miss Carolyn Welch, Miss Suzanne Goodman and a quartet composed of Messrs. John Mayfield, Wilmer Reed, Sam Paul and Overton Fry. Mr. Mayfield led the group in assembly singing and Donald Shuford offered the invocation.

Following the banquet program the auditorium was cleared and Dude Branstetter and his orchestra (all former L. H. S. students) furnished music for dancing.



A T H L E T I C S



First row—Harvey Niffen, Merrill Henderson, Marvin Henry, Gene Behringer, Ralph Hammack, Billy Jordan.
Second row—Johnny Dillender, Danney Robinson, Charles Nord, Roger Jones, Bill Sandven, Jerry Powell.
Third row—Bob Conrad, Meade Spears, Newt Bryson, Herman Thomas, Bill Shive.
Fourth row—Conne Sandven, Bill Guengerich, Kenny Marsh, Charles Rose, Bill Adkison.
Fifth row—Bill Henry, Coach Grant.



First row—Danney Robinson, Gene Behringer, Bill Adkison, Merrill Henderson, Charles Nord, Bill Jordan.
Second row—Marvin Henry, Bob Conrad, Conne Sandven, Newt Bryson, Ralph Hammack, Roger Jones.
Third row—Coach Grant, Bill Henry.

BASKETBALL

The Louisiana Bulldogs emerged right out of the football season into basketball and enjoyed one of their best seasons in recent years. They won seven games in their regular schedule while losing five. They also competed in six tournaments and had a record of nine victories and six defeats.

Their record for the regular season is as follows:

Bulldogs.....	17	Eolia.....	34
Bulldogs.....	38	Clarksville.....	24
Bulldogs.....	34	Vandalia.....	44
Bulldogs.....	45	McCooley.....	19
Bulldogs.....	38	Elsberry.....	39
Bulldogs.....	31	Pleasant Hill.....	45
Bulldogs.....	38	McCooley.....	32
Bulldogs.....	53	Eolia.....	25
Bulldogs.....	39	Troy.....	24
Bulldogs.....	32	Elsberry.....	43
Bulldogs.....	44	Clarksville.....	31
Bulldogs.....	47	Troy.....	33

In tournament play the Bulldogs were eliminated in both the Bowling Green and Troy tourneys in the earlier part of the season. In the Eolia Tournament, however, they won second-place by taking all their games except the final with Eolia. The tournament here on the home court—the first since prewar days—offered the Bulldogs another chance for the coveted first-place trophy. They defeated Eolia and St. Charles to gain the final round, but were defeated by Bowling Green in the last game, and thus the Bulldogs received second-place honors again. In the sub-regional tournament at Elsberry, the Red and Whites won the championship trophy by defeating Augusta, Elsberry and Bowling Green, in that order. The final game was a hilarious over-time win over Bowling Green, 41 to 38. Having won the sub-regional, the Bulldogs moved on to the regional at Hannibal where they were eliminated in the first round by Columbia.

The Bulldogs won a total of sixteen games and lost eleven during the entire season and rolled up a total of 1,021 points while their opponents scored 843. They brought home three trophies, one championship and two runners-up. Though their playing abilities were far from impressive at the beginning of the season, the Bulldogs improved with every game they played and by the drills and practice, which Coach Grant put them through, they became one of the most respected teams in the district.

Seven players were awarded the block L by Coach Grant. They are Bill Adkison, Gene Behringer, Newt Bryson, Bob Conrad, Merrill Henderson, Charles Nord and Danney Robinson. Adkison and Behringer were elected co-captains by the team. Five players will be lost by graduation this year—Gene Behringer, Newt Bryson, Bob Conrad, Merrill Henderson, and Marvin Henry.



First row—Jerry Powell, John Bray, Lewis Todd, Merrill Henderson, Gordon Dudley, Gene Murry, Bill Adkison, Arroll Quaite, Marvin Henry, Harry Elliott, Bill Guengerich. *Second row*—Roger Jones, Wendell Culwell, Francis Johnson, Jack Ince, Charles Nord, R. D. Hamlett, Danney Robinson, James Hallows, Billy Jordan. *Standing*—Bill Henry, Newt Bryson, Junior Barnes, Meade Spears, Keith Wescott, Coach Grant, Paul Burks, Junior Newman, Bob Burbridge, Ralph Hammack, Bob Conrad.

FOOTBALL

Football practice got under way on Labor Day with thirty boys reporting to their new coach, Eugene Grant. Since football was discontinued the year before, Arroll Quaite was the only returning letterman.

On Friday night September 20, the Bulldogs went to Pittsfield for their first game and lost, 34 to 0. Then the Louisiana team played two games on their home field, both resulting in ties. One was with Macon and the other with the strong McCooey team. The following week the Bulldogs went to Hannibal and McCooey got revenge on the Red and Whites by winning, 26 to 6. The next contest on the schedule was the Louisiana Homecoming game against Palmyra. The Bulldogs played good ball before a large crowd and won their first game of the season, 12 to 7. Then they lost their next contest to Shelbina, 26 to 6. On the following Friday the Bulldogs played their best game of the season by defeating Hannibal "B" team, 20 to 0. Their two remaining games were lost to Centralia and Pleasant Hill.

For the record the Bulldogs won two games, tied two, and lost five. They rolled up 63 points to their opponents' 132. The squad lost four lettermen in Bob Conrad, Newt Bryson, Junior Barnes and Merrill Henderson. Danney Robinson and Arroll Quaite were elected co-captains. The Bulldogs, with more experience, are looking toward a better season next year.

Bulldogs Open Grid Season At Pittsfield

Local Team Short on Line Men, Well Supplied In Back Field

The Bulldogs of Louisiana High School opened their first game of the season at Pittsfield today.

Bessie Hunter Homecoming Queen; Bulldogs Take Palmyra Grid Team

Large Crowd Gathers For One of Best Games In Years — Meet Shelbyna Here Friday

Miss Bessie Hunter, Louisiana High School Senior, Friday night was crowned queen of the LHS Homecoming, in an evening high with excitement as the Bulldogs defeated Palmyra football team in the largest crowd.

Eleven Teams To Vie For Trophies In Tournament Starting Tomorrow

First Game Starts 6:45 Wednesday Evening with Local "B's" Against Bowling Green

Basketball fire works will begin Wednesday at 6:45 p. m., when Bowling Green and the Louisiana "Bs" tangle in the opening game of the Louisiana High School Basketball Tournament.

Bulldogs Take 2nd Place In Eolia Tourney

Top Honor Goes To Host Team — Defeat LHS 37 to 35

The Louisiana Bulldogs had to be content with the second place trophy of the Eolia Tournament Saturday night when they were edged out in the championship game.

21 Receive Grid Letters At Banquet

Season Ends With Prospects For High Scoring Team Next Year

A banquet honoring football players of Louisiana high school held in the auditorium Friday evening of the first to be held 10th in the school. It was the first season.

Bulldogs Pass To 20-0 Win Over Hannibal

Defeat Hannibal Junior Varsity Friday Night Before Smallest Crowd of Season

The Louisiana Bulldogs rolled up their largest score of the season along with their second victory Friday night when they downed the Hannibal Junior Varsity 20 to 0.

Bulldogs Hold McCooey To 13-Point Tie

Henderson and Robinson Make Points For Locals — Meet At Hannibal Friday

Louisiana's Bulldogs put on a gallant battle in an attempt for their first taste of victory here Friday night when they held McCooey to a 13-point tie.

Bulldogs Win Sub-Regional In Overtime

Weather No Hindrance To Fans, Traveling To Elsberry For Championship Game

Several hundred fans braved Saturday's blizzard to watch Louisiana's Bulldogs humble the Bowling Green team in an overtime game 41 to 35 in the finals of the sub-regional tournament.

Basketball Season Opens Less Than 24 Hours After Grid Season Ends

With the High School football season closing Tuesday night in a final game here with Pleasant Hill, Coach Eugene Grant lost no time in converting high school athletes into the winter sport of basketball. The basketball season started the following day, Wednesday, when the first game was held.

Bulldogs Win Over Clarksville Here Friday

The Louisiana High School Bulldogs defeated teams of the Clarksville area Friday night.

Bulldogs Take McCooey 38-32 Saturday

Will Play Eolia Here Tonight — "B" Team Loses Out in Vandalia Tourney

The Louisiana Bulldogs, after a hard-fought game, defeated McCooey 38 to 32 Saturday night.



First row—Francis Johnson, Merrill Henderson, Marvin Henry, Gene Behringer, Danney Robinson, Bill Adkison, Bill Jordan. *Second row*—Bob Conrad, Roger Jones, Wendell Culwell, Harry Elliott, Gordon Dudley, Jack Ince, Charles Nord, Ralph Hammack. *Third row*—Keith Wescott, Arroll Quaite, Newt Bryson, R. D. Hamlett, Junior Newman, Lewis Todd. *Fourth row*—Coach Grant, Gene Murry, Junior Barnes.*

* Through an error on the part of the editor, Junior Barnes failed to get in the picture, but nevertheless Junior played a good right tackle on the football team in earning his "L" this year.

"L" CLUB

The "L" Club is one of the high school's most exclusive organizations. Membership is confined to those who have earned a letter in one of the school's major sports—football, basketball, track or softball. An athlete is awarded the school letter by virtue of his athletic prowess, his good sportsmanship and his willingness to work for the good of the team. Thus, the fine character of the club is one of the determining factors for almost every young man's desire to become a member sometime or other during his high school career.

At the beginning of the year, the club had nine members, but the lettering of the football team brought the total to twenty-four. The new members were initiated into the club by having crew haircuts, wearing dresses and providing entertainment for a student assembly by obeying the commands of veteran members.

Only members have the right to wear the Bulldog emblem which signifies their membership. The "L" Club party, which is open to members and their guests, is always enjoyable entertainment.

During the summer the club increased its treasury funds by managing a basketball throw at the Louisiana Street and River Festival. It proved to be a popular game during the three-day celebration.

Newt Bryson is president of the club, and it is sponsored by Coach Eugene Grant.









P A T R O N S

- Ab's Cafe
 Abel Bros. Shell Service
 Andrae, Dr. R. L.
 Arcade Clothing Co.
 Audrey "B" Shop
 Bank of Louisiana
 Behrens, Ray, Ford Garage
 Benning, Davis
 Berry, Fred, Grocery
 Brinker and Son, Barbers
 Brown's Pharmacy
 Bruce's 8th Street Market
 Bryson, Mrs. Gladys
 Campbell Cleaners
 Cash, Glenn, Wholesale Co.
 Cooper's Shoe Store
 Cunningham, Dr. Eric
 Curry Shoe Shop
 D-X Filling Station
 Dillender's Grocery Co.
 Do-nut Shop
 Duncan and Jordan
 Dunn and Creamer Garage
 Frank's Barber Shop
 Frier Hardware Co.
 Frozen Gold Ice Cream Co.
 Goodin, S. A. & Son, Barbers
 Green's Book Store
 Haley, Wm. B. and W. P., Real
 Estate and Insurance
 Health Way Dairy
 J & M Food Markets, Inc.,
 Operating Tomboy Stores
 Jenkins Sewing Center,
 F. E. Jenkins, Owner
 Johnson, Q. R., Jewelry Store
 Jones Clothing Store
 Kientzle's Shoe Store
 King's Machine Shop
 Kritz Radio Sales and Service
 LaCrosse Lumber Co.
 Lending's
 Logan's Fine Foods
 Louisiana Furniture Co.
 Louisiana Hardware Co.
 Louisiana Lumber Co.
 Louisiana Pharmacy
 Louisiana Press Journal
 M. F. A. Elevator
 Maxfield's
 May & May, Lawyers
 Maytag Store
 McDannold Battery and Electric
 Service
 Mecantile Bank
 Miller Plumbing & Electric Co.
 Missouri Edison Co.
 Model Cleaners
 Morton's Cab and Delivery Service
 Mutt & Jeff Service Station
 Nickles Pharmacy
 Nord-Buffum Pearl Button Co.
 O'Donnell's Pharmacy
 Penney's
 Pitney, V. M., Insurance and
 Real Estate
 Princess Ice Cream Shop
 Ray and Son
 Rose Sheet Metal Co.
 Schaper Chevrolet Co.
 Shields-Trower Motor Co.
 Smith's Grocery
 Stark Bros. Nursery and
 Orchard Co.
 Stark Furniture and Stove Co.
 Todd, E. & Son, Transfer and
 Coal Co.
 Vallentine, Glenn, Inc.,
 Dodge-Plymouth Dealer
 Wahl Hotel
 Wahl Hotel Cafe
 Walker Bros., Phillips 66
 Weiss' Dress Shop
 Welch's Ben Franklin Store
 Western Auto Associate Store
 White Star Laundry
 Worthwhile Bakery
 Zumwalt Motor Co.

AUTOGRAPHS

